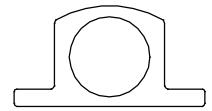


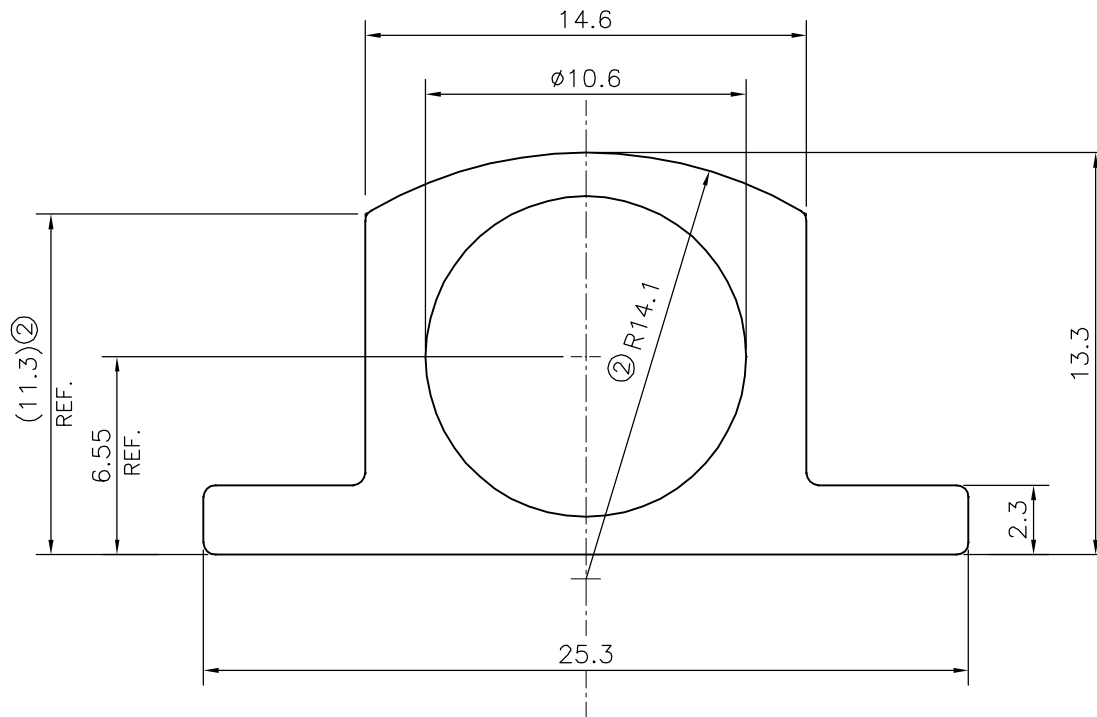
P-18665-1

X2429

18083



SCALE: - 1:1



ISSUE-2

DIMENSION CHANGED FROM 10 mm TO 11.30 mm

& RADIUS CHANGED FROM 9.7 TO 14.1 mm

WEIGHT CHANGED FROM 0.312 TO 0.326 kg/m

TOLERANCES ON OVERALL WIDTHS & WIDTHS ACROSS FLATS OF BARS, & REGULAR SECTIONS

UPTO 6.40mm - ±0.20	UPTO 32.0mm - ±0.38	UPTO 120.0mm - ±0.85	1. STRAIGHTNESS=1.7mm/M 2. TWIST=1.7mm/M 3. ANGULARITY= ±2° 4. FLATNESS =0.007xWIDTH
UPTO 10.0mm - ±0.23	UPTO 50.0mm - ±0.46	UPTO 160.0mm - ±1.02	
UPTO 12.0mm - ±0.25	UPTO 60.0mm - ±0.53	UPTO 200.0mm - ±1.14	
UPTO 16.0mm - ±0.28	UPTO 80.0mm - ±0.69	UPTO 250.0mm - ±1.40	
UPTO 25.0mm - ±0.30	UPTO 100.0mm - ±0.75	UPTO 300.0mm - ±1.65	



SYMBOL OF QUALITY
AN ISO 9001 COMPANY

JINDAL ALUMINIUM LTD.
BANGALORE-560073 (INDIA)

	NAME	DATE
DRAWN	J.P.KAUSHIK	19-06-2019
CHECKED		
APPROVED	J.N. RAI	11-07-2019

1. ALL DIMENSIONS ARE IN mm.
2. ROUND OFF ALL SHARP CORNERS WITH 0.40 mm.
3. TOLERANCES WILL BE AS PER IS:6477-1983 , UNLESS OTHERWISE SPECIFIED

SCALE	4:1
AREA mm ²	120.85
PERIMETER mm.	72.76
WEIGHT kg/m	0.326

PARTY'S NAME	PREMIER SALES CORP. NEW DELHI	DRAWING No.	P-18665-1	SECTION No.	-
PARTY'S DRAWING No.	MODIFIED OF 18063	X2429	X2429		
ALLOY & TEMPER	HE9 WP A3D	18083	18083		18083(ISSUE-2)
DESCRIPTION	TOWER BOLT SECTION				