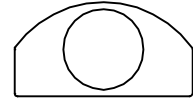
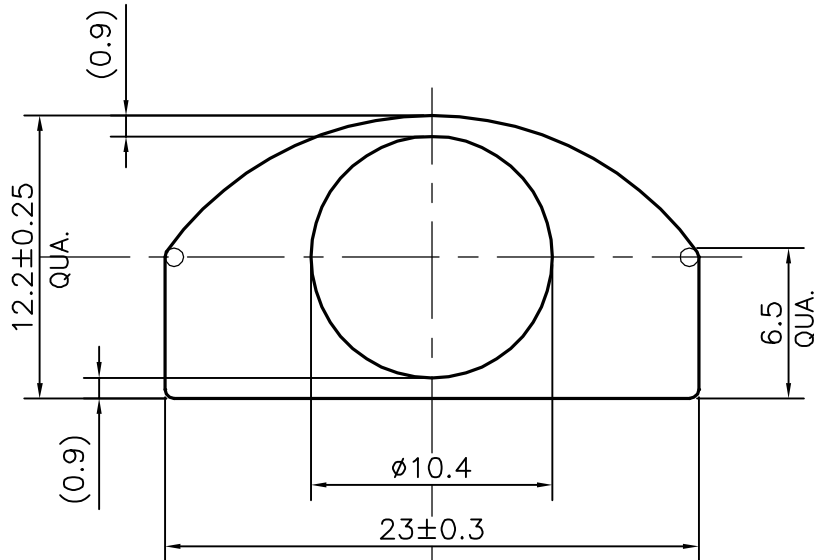


P-22789

18112



SCALE: -1:1



SCALE: -3:1

APPROXIMATE WEIGHT RANGE -0.375 - 0.459 kg/m

FINISH:- ANODIZING

TOLERANCES ON OVERALL DIMENSIONS OF HOLLOW SECTIONS

UPTO 20.0mm - ±0.30
 UPTO 30.0mm - ±0.38
 UPTO 40.0mm - ±0.45
 UPTO 50.0mm - ±0.52
 UPTO 60.0mm - ±0.60

UPTO 80.0mm - ±0.70
 UPTO 100.0mm - ±0.80
 UPTO 120.0mm - ±0.90
 UPTO 140.0mm - ±1.00
 UPTO 160.0mm - ±1.14

UPTO 180.0mm - ±1.27
 UPTO 200.0mm - ±1.40
 UPTO 225.0mm - ±1.52

1. STRAIGHTNESS=1.7mm/M
2. TWIST=1.7mm/M
3. ANGULARITY= ±2°
4. FLATNESS =0.006xWIDTH



SYMBOL OF QUALITY
 AN ISO 9001 COMPANY

JINDAL ALUMINIUM LTD.
 BANGALORE-560073 (INDIA)

	NAME	DATE
DRAWN	PUNITH	22-07-2021
CHECKED		
APPROVED	B.NATARAJA	24-07-2021

1. ALL DIMENSIONS ARE IN mm.
2. ROUND OFF ALL SHARP CORNERS WITH 0.40 mm.
3. TOLERANCES WILL BE AS PER IS:6477-1983 , UNLESS OTHERWISE SPECIFIED

SCALE	3:1
AREA mm ²	154.556
PERIMETER mm.	62.030
WEIGHT kg/m	0.417

PARTY'S NAME IMPERIAL METAL MART, NEW DELHI

PARTY'S DRAWING No. LIGHTER SECTION OF 18100

ALLOY & TEMPER HE9 WP A3D

DESCRIPTION TOWER BOLT SECTION

DRAWING No.	SECTION No.
P-22789	-
18112	18112