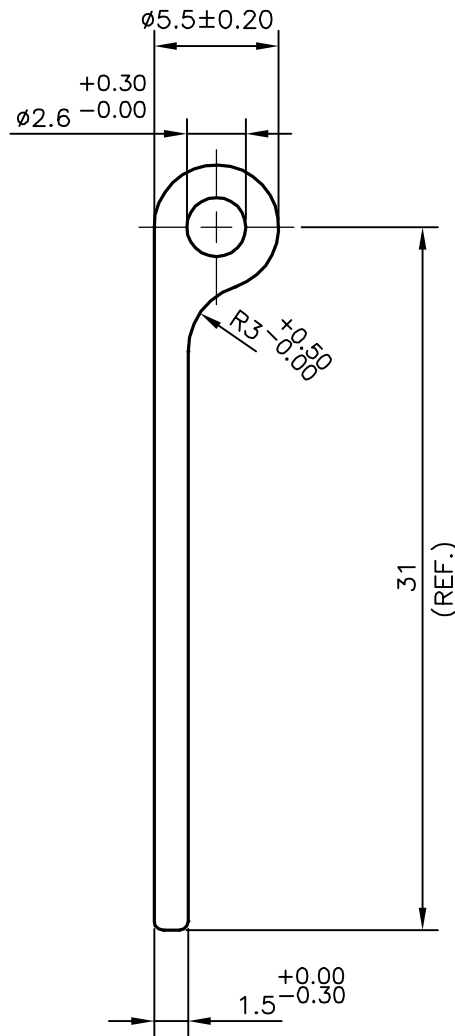
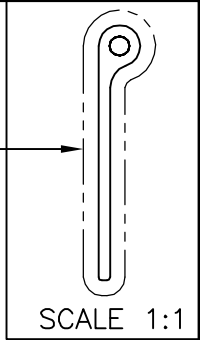



P-12999
S3869
18362

EXPOSED SURFACE



TOLERANCES ON OVERALL WIDTHS & WIDTHS ACROSS FLATS OF BARS, & REGULAR SECTIONS

UPTO 6.40mm - ±0.20	UPTO 32.0mm - ±0.38	UPTO 120.0mm - ±0.85	1. STRAIGHTNESS=1.7mm/M 2. TWIST=1.7mm/M 3. ANGULARITY= ±2° 4. FLATNESS =0.3mm
UPTO 10.0mm - ±0.23	UPTO 50.0mm - ±0.46	UPTO 160.0mm - ±1.02	
UPTO 12.0mm - ±0.25	UPTO 60.0mm - ±0.53	UPTO 200.0mm - ±1.14	
UPTO 16.0mm - ±0.28	UPTO 80.0mm - ±0.69	UPTO 250.0mm - ±1.40	
UPTO 25.0mm - ±0.30	UPTO 100.0mm - ±0.75	UPTO 320.0mm - ±1.70	

 SYMBOL OF QUALITY AN ISO 9001 COMPANY	<b>JINDAL ALUMINIUM LTD.</b> BANGALORE-560073 (INDIA)	DRAWN	NAME	DATE	
		CHECKED	S.RIVATHSA	04-09-2013	
1. ALL DIMENSIONS ARE IN mm. 2. ROUND OFF ALL SHARP CORNERS WITH 0.40 mm. 3. TOLERANCES WILL BE AS PER IS:6477-1983 , UNLESS OTHERWISE SPECIFIED		APPROVED	S.S.GARG	26-09-2013	
		SCALE		3:1	
PARTY'S NAME		AEROSPACE ENGINEERS., SALEM		AREA mm <sup>2</sup>	63.734
		PARTY'S DRAWING No.		AE-DIN 65454-A-HH-232	PERIMETER mm.
ALLOY & TEMPER		6005 T6		WEIGHT kg/m	0.172
		DESCRIPTION		HINGE SECTION	DRAWING No.
				P-12999	-
				S3869	S3869
				18362	18362