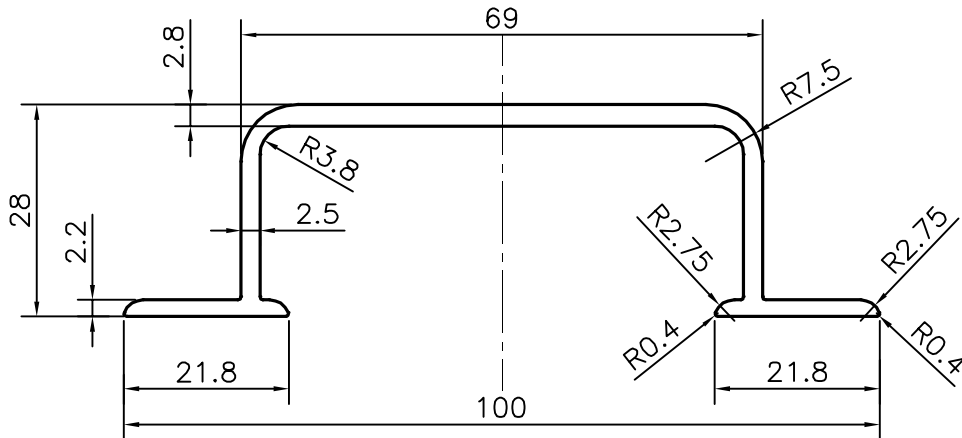


P-22741-1

18685




APPROXIMATE WEIGHT RANGE - 3.600 - 4.000 kg/12feet

WEIGHT :- 3.767 kg/12feet (MEAN)

TOLERANCES ON OVERALL WIDTHS & WIDTHS ACROSS FLATS OF BARS, & REGULAR SECTIONS

UPTO 6.40mm - ±0.20	UPTO 32.0mm - ±0.38	UPTO 120.0mm - ±0.85	1. STRAIGHTNESS=1.7mm/M 2. TWIST=1.7mm/M 3. ANGULARITY= ±2' 4. FLATNESS =0.006xWIDTH
UPTO 10.0mm - ±0.23	UPTO 50.0mm - ±0.46	UPTO 160.0mm - ±1.02	
UPTO 12.0mm - ±0.25	UPTO 60.0mm - ±0.53	UPTO 200.0mm - ±1.14	
UPTO 16.0mm - ±0.28	UPTO 80.0mm - ±0.69	UPTO 250.0mm - ±1.40	
UPTO 25.0mm - ±0.30	UPTO 100.0mm - ±0.75	UPTO 300.0mm - ±1.65	

 SYMBOL OF QUALITY AN ISO 9001 COMPANY	JINDAL ALUMINIUM LTD. BANGALORE-560073 (INDIA)	DRAWN	NAME	DATE
		CHECKED	SONU	08-07-2021
1. ALL DIMENSIONS ARE IN mm. 2. ROUND OFF ALL SHARP CORNERS WITH 0.40 mm. 3. TOLERANCES WILL BE AS PER IS:3965-1981 , UNLESS OTHERWISE SPECIFIED		APPROVED	B.NATARAJA	13-07-2021
		SCALE		1:1
PARTY'S NAME ALUMINIUM TRADING CO., NEW DELHI		AREA mm ²		381.332
		PERIMETER mm.		306.496
PARTY'S DRAWING No. MODIFICATION OF 18655 & AS PER PARTY REQUIREMENT		WEIGHT kg/m		1.030
		DRAWING No.	SECTION No.	
ALLOY & TEMPER HE9 WP A3D		P-22741-1		-
		18685		18685
DESCRIPTION HANDLE SECTION				