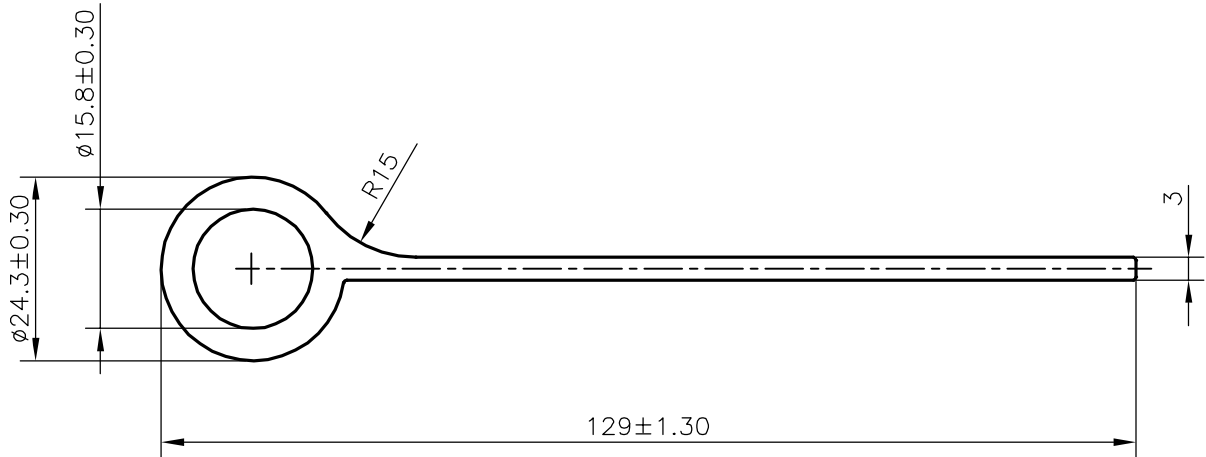


P-20719-2

18863



TOLERANCES ON OVERALL DIMENSIONS OF HOLLOW SECTIONS

UPTO 20.0mm - ± 0.30	UPTO 80.0mm - ± 0.70	UPTO 180.0mm - ± 1.27	1. STRAIGHTNESS=1.7mm/M 2. TWIST=1.7mm/M 3. ANGULARITY= $\pm 2^\circ$ 4. FLATNESS =0.006xWIDTH
UPTO 30.0mm - ± 0.38	UPTO 100.0mm - ± 0.80	UPTO 200.0mm - ± 1.40	
UPTO 40.0mm - ± 0.45	UPTO 120.0mm - ± 0.90	UPTO 225.0mm - ± 1.52	
UPTO 50.0mm - ± 0.52	UPTO 140.0mm - ± 1.00		
UPTO 60.0mm - ± 0.60	UPTO 160.0mm - ± 1.14		



SYMBOL OF QUALITY
AN ISO 9001 COMPANY

JINDAL ALUMINIUM LTD.
BANGALORE-560073 (INDIA)

	NAME	DATE
DRAWN	DARPAN	18-02-2020
CHECKED		
APPROVED	B.NATARAJA	20-02-2020
SCALE		1:1
AREA mm ²		594.123
PERIMETER mm.		283.28
WEIGHT kg/m		1.604
DRAWING No.	SECTION No.	
P-20719-2	-	
18863	18863	

1. ALL DIMENSIONS ARE IN mm.
2. ROUND OFF ALL SHARP CORNERS WITH 0.40 mm.
3. TOLERANCES WILL BE AS PER **IS:6477-1983** , UNLESS OTHERWISE SPECIFIED

PARTY'S NAME	ALUMINUM TRADING COMPANY, DELHI
PARTY'S DRAWING No.	MODIFIED SECTION OF 18861
ALLOY & TEMPER	HE9 WP A3D
DESCRIPTION	STAPLE SECTION