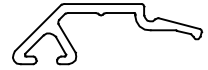


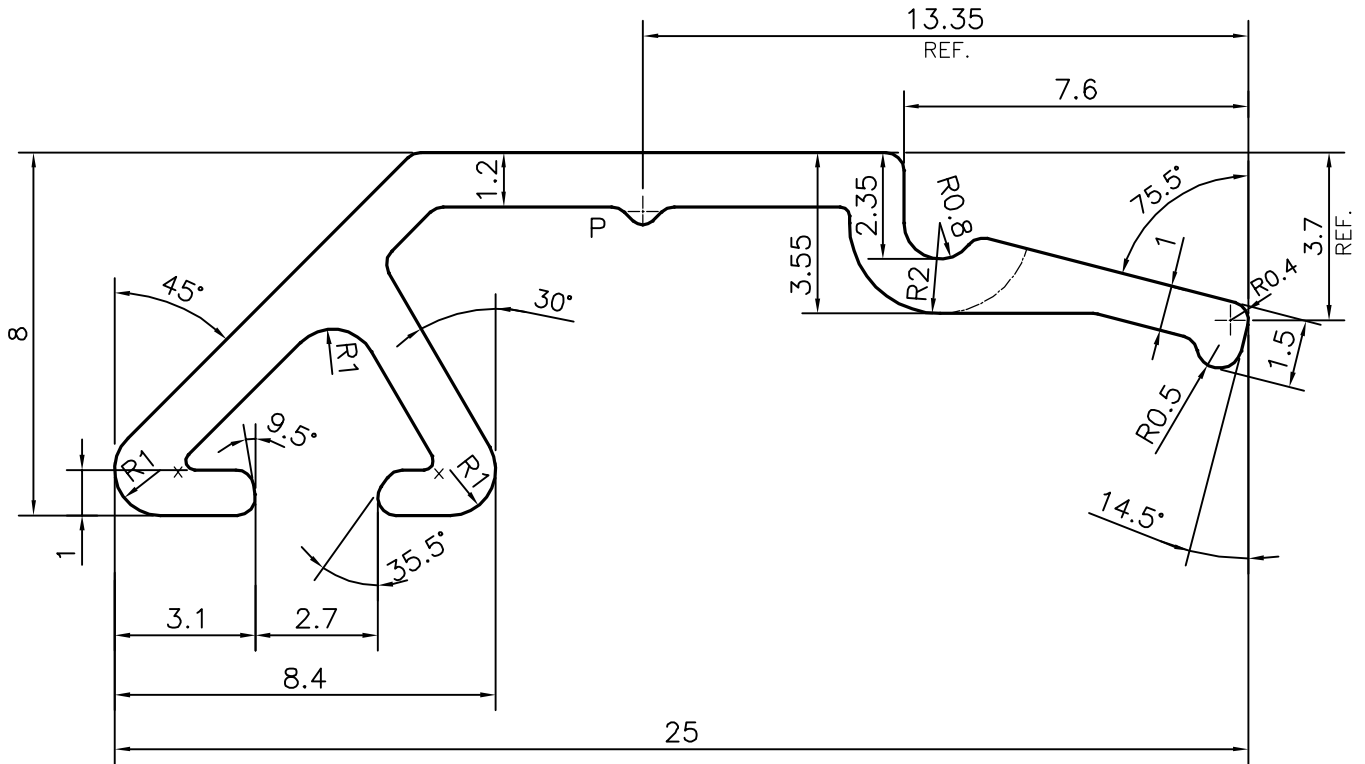
P-14161

S4315

19480



SCALE: - 1:1



P = PIP 0.4x90° (1 PLACE)  
 X = RADIUS 0.2 mm. (2 PLACES)

## TOLERANCES ON OVERALL WIDTHS &amp; WIDTHS ACROSS FLATS OF BARS, &amp; REGULAR SECTIONS

UPTO 6.40mm - ±0.20	UPTO 32.0mm - ±0.38	UPTO 120.0mm - ±0.85	1. STRAIGHTNESS=1.7mm/M 2. TWIST=1.7mm/M 3. ANGULARITY= ±2° 4. FLATNESS =0.007xWIDTH
UPTO 10.0mm - ±0.23	UPTO 50.0mm - ±0.46	UPTO 160.0mm - ±1.02	
UPTO 12.0mm - ±0.25	UPTO 60.0mm - ±0.53	UPTO 200.0mm - ±1.14	
UPTO 16.0mm - ±0.28	UPTO 80.0mm - ±0.69	UPTO 250.0mm - ±1.40	
UPTO 25.0mm - ±0.30	UPTO 100.0mm - ±0.75	UPTO 300.0mm - ±1.65	



SYMBOL OF QUALITY  
AN ISO 9001 COMPANY

**JINDAL ALUMINIUM LTD.**  
 BANGALORE-560073 (INDIA)

	NAME	DATE
DRAWN	PARVESH	02-12-2014
CHECKED		
APPROVED	S.S.GARG	06-12-2014

- ALL DIMENSIONS ARE IN mm.
- ROUND OFF ALL SHARP CORNERS WITH 0.40 mm.
- TOLERANCES WILL BE AS PER IS:3965-1981, UNLESS OTHERWISE SPECIFIED

SCALE	6:1
AREA mm <sup>2</sup>	46.526
PERIMETER mm.	77.286
WEIGHT kg/m	0.126

PARTY'S NAME AGV FENESTRATION PVT LTD, NEW DELHI

DRAWING No. SECTION No.

PARTY'S DRAWING No. 1826

P-14161 -  
 S4315 S4315  
 19480 19480

ALLOY & TEMPER HE9 WP

DESCRIPTION GLAZING CLIP SECTION