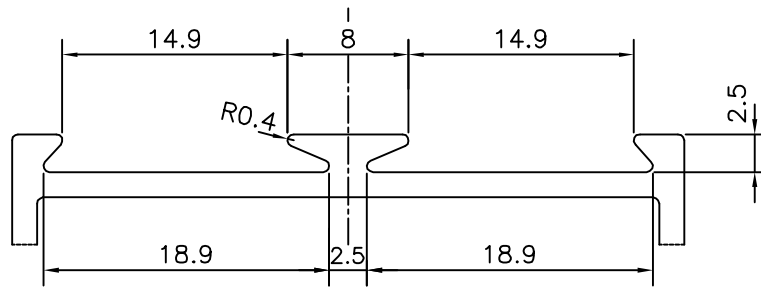


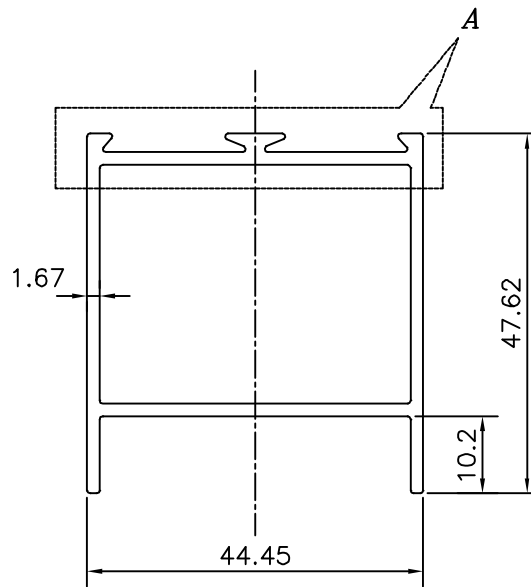
P-12726-1

S3764

19637




DETAIL OF "A"  
SCALE 2:1



WEIGHT RANGE -  $+0.0\%$   
 $-6.0\%$   
0.799 kg/m TO 0.850 kg/m

TOLERANCES ON OVERALL WIDTHS & WIDTHS ACROSS FLATS OF BARS, & REGULAR SECTIONS

UPTO 6.40mm - ±0.20	UPTO 32.0mm - ±0.38	UPTO 120.0mm - ±0.85	UPTO 320.00mm - ±1.70
UPTO 10.0mm - ±0.23	UPTO 50.0mm - ±0.46	UPTO 160.0mm - ±1.02	
UPTO 12.0mm - ±0.25	UPTO 60.0mm - ±0.53	UPTO 200.0mm - ±1.14	
UPTO 16.0mm - ±0.28	UPTO 80.0mm - ±0.69	UPTO 250.0mm - ±1.40	
UPTO 25.0mm - ±0.30	UPTO 100.0mm - ±0.75	UPTO 300.0mm - ±1.65	

 SYMBOL OF QUALITY AN ISO 9001 COMPANY	<b>JINDAL ALUMINIUM LTD.</b> BANGALORE-560073 (INDIA)	NAME	DATE
		DRAWN	PARVESH 13-05-2013
		CHECKED	
		APPROVED	S.S.GARG 17-05-2013
1. ALL DIMENSIONS ARE IN mm. 2. ROUND OFF ALL SHARP CORNERS WITH 0.40 mm. 3. TOLERANCES WILL BE AS PER IS:6477-1983 , UNLESS OTHERWISE SPECIFIED		SCALE	1:1
		AREA mm <sup>2</sup>	314.633
		PERIMETER mm.	224.084
PARTY'S NAME	GIRDHARI LAL CONSTRUCTIONS PVT. LTD., BATHINDA	WEIGHT kg/m	0.850
PARTY'S DRAWING No.	HEAVIER OF SECTION No. 19539	DRAWING No.	SECTION No.
ALLOY & TEMPER	6063 T6	P-12726-1	-
DESCRIPTION	PARTITION SECTION	S3764	S3764
		19637	19637