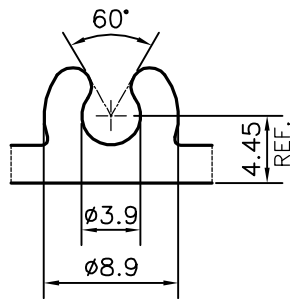
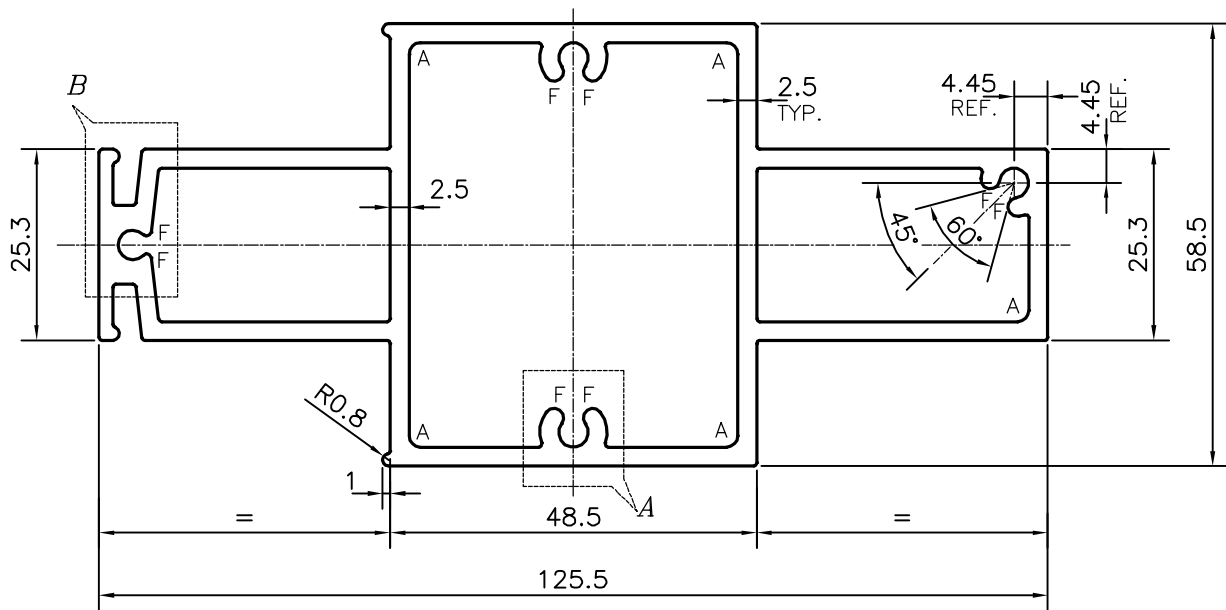


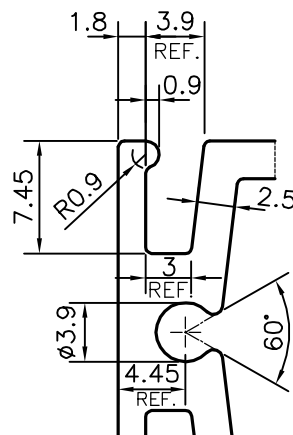
P-13535

S4281

19642



DETAIL OF "A"
SCALE 2:1



DETAIL OF "B"
SCALE 2:1

A = RADIUS 1.5 mm. (5 PLACES)
F = FULL RADIUS (8 PLACES)

TOLERANCES ON OVERALL WIDTHS & WIDTHS ACROSS FLATS OF BARS, & REGULAR SECTIONS

UPTO 6.40mm - ±0.20	UPTO 32.0mm - ±0.38	UPTO 120.0mm - ±0.85	1. STRAIGHTNESS=1.7mm/M 2. TWIST=1.7mm/M 3. ANGULARITY= ±2° 4. FLATNESS =0.007xWIDTH
UPTO 10.0mm - ±0.23	UPTO 50.0mm - ±0.46	UPTO 160.0mm - ±1.02	
UPTO 12.0mm - ±0.25	UPTO 60.0mm - ±0.53	UPTO 200.0mm - ±1.14	
UPTO 16.0mm - ±0.28	UPTO 80.0mm - ±0.69	UPTO 250.0mm - ±1.40	
UPTO 25.0mm - ±0.30	UPTO 100.0mm - ±0.75	UPTO 300.0mm - ±1.65	



SYMBOL OF QUALITY
AN ISO 9001 COMPANY

JINDAL ALUMINIUM LTD.
BANGALORE-560073 (INDIA)

	NAME	DATE
DRAWN	PARVESH	25-04-2014
CHECKED		
APPROVED	S.S.CARG	04-11-2014

1. ALL DIMENSIONS ARE IN mm.
2. ROUND OFF ALL SHARP CORNERS WITH 0.40 mm.
3. TOLERANCES WILL BE AS PER IS:6477-1983 , UNLESS OTHERWISE SPECIFIED

SCALE	1:1
AREA mm ²	1104.168
PERIMETER mm.	397.672
WEIGHT kg/m	2.981

PARTY'S NAME	AGV ALFAB LTD., NEW DELHI	DRAWING No.	P-13535	SECTION No.	-
PARTY'S DRAWING No.	HEAVIER OF SECTION No.- 20996		S4281		S4281
ALLOY & TEMPER	HE9 WP		19642		19642
DESCRIPTION	DOOR SECTION				