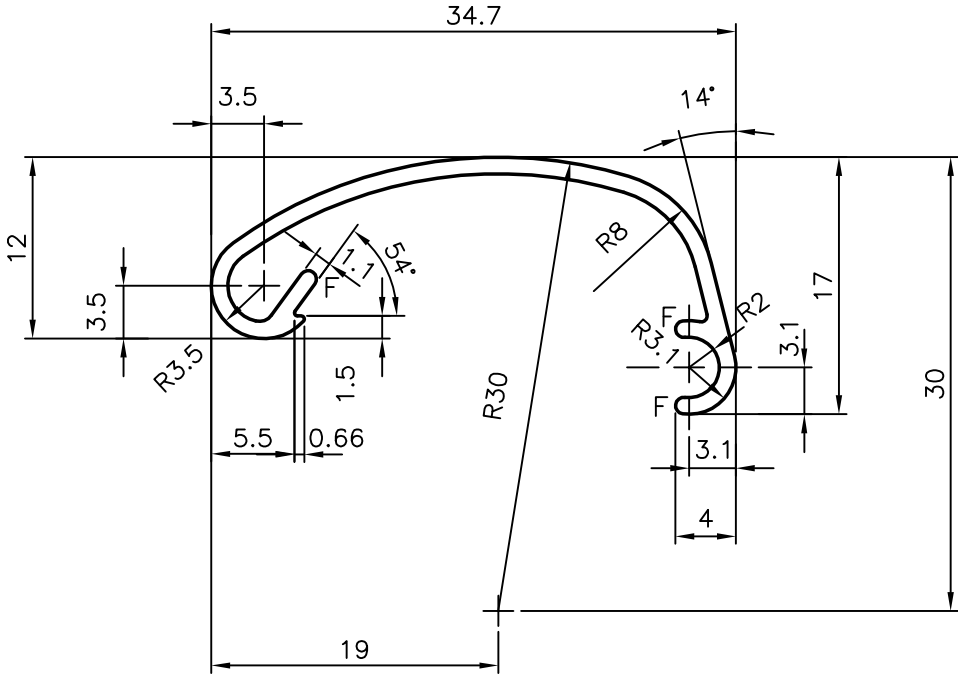
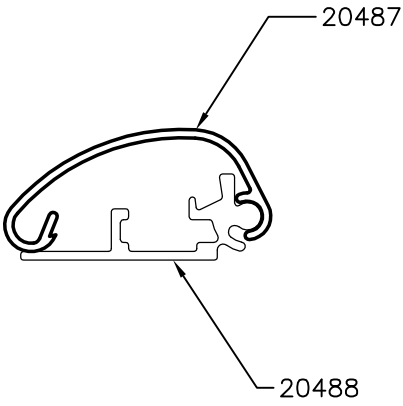
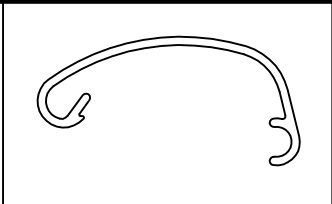



|        |
|--------|
| P-6239 |
| X551   |
| 20487  |



GENERAL WALL THICKNESS 1.1 (TYP)  
 F = FULL RADIUS(3)

|  |  |   |             |             |             |
|--|--|---|-------------|-------------|-------------|
| <br>SYMBOL OF QUALITY<br>AN ISO 9001 COMPANY                      | <b>JINDAL ALUMINIUM LTD.</b><br>BANGALORE-560073 (INDIA) |   | NAME        | DATE        |             |
|  |  | DRAWN   | J.P.KAUSHIK | 09-03-2006  |             |
|  |  | CHECKED   |             |             |             |
|  |  | APPROVED  |             |             |             |
| 1. ALL DIMENSIONS ARE IN mm.<br>2. ROUND OFF ALL SHARP CORNERS WITH 0.40 mm.<br>3. TOLERANCES WILL BE AS PER IS:3965-1981 UNLESS OTHERWISE SPECIFIED |  | SCALE   |             | 2:1         |             |
|  |  | AREA mm <sup>2</sup>                            |             | 68.898      |             |
|  |  | PERIMETER mm.                                   |             | 124.145     |             |
| PARTY'S NAME   |  | SPUR RETAIL MERCHANDISING (P) LTD.<br>BANGALORE |             | WEIGHT kg/m | 0.186       |
| PARTY'S DRAWING No.  |  | AS PER SAMPLE                                   |             | DRAWING No. | SECTION No. |
| ALLOY & TEMPER   |  | HE9 WP  |             | P-6239      | -           |
| DESCRIPTION  |  | DISPLAY SECTION                                 |             | X551        | X551        |
|  |  |   |             | 20487       | 20487       |
|  |  |   |             |             |             |