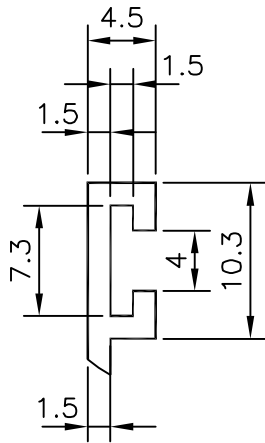


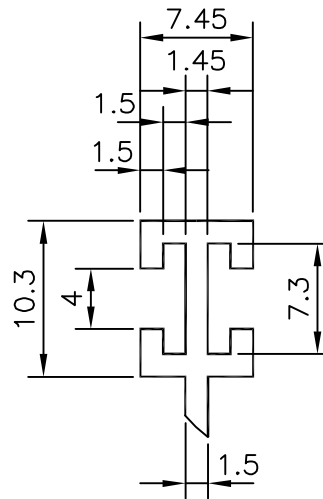
8933

12025

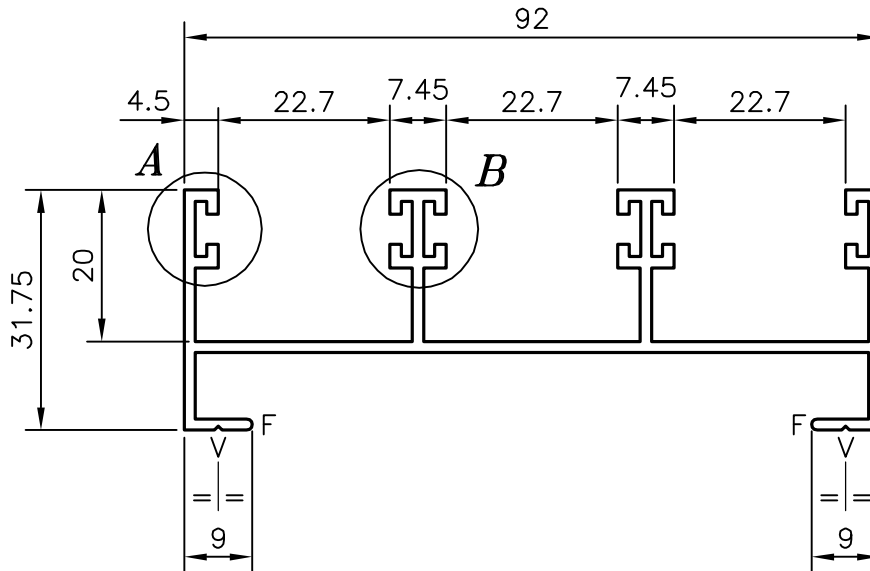
20831



A (2:1)

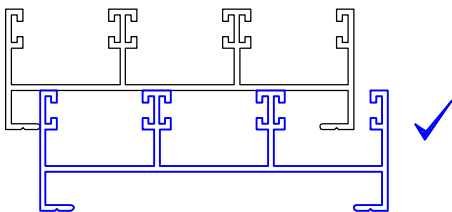


B (2:1)



METHOD OF BUNDLING (PACKING)

SCALE
N.T.S.



GENERAL WALL THICKNESS:- 1.50 mm.
F = FULL RADIUS (2)
V = 0.5 x 90° 'VEE' GROOVE (2)

JINDAL ALUMINIUM LTD.
BANGALORE-560073

	NAME	DATE
DRAWN	R.D.Sharma	07-01-98
CHECKED		
APPROVED		
PARTY'S NAME	GENERAL CATEGORY	
SCALE		1:1 & 2:1
PARTY'S DRAWING No.	WEIGHT kg/m	1.060
ALLOY & TEMPER	SECTION No.	20831
LENGTH	DRAWING No.	
DESCRIPTION	20831	

1. ALL DIMENSIONS ARE IN mm.
2. ROUND OFF ALL SHARP CORNERS WITH 0.4 mm.
3. TOLERANCES WILL BE AS PER IS: 3965-1981 ,UNLESS OTHERWISE SPECIFIED