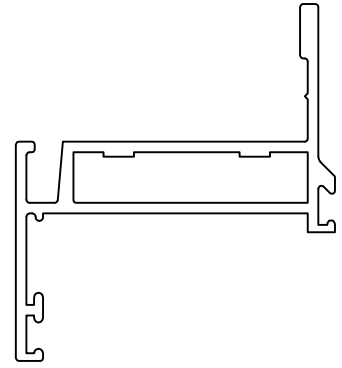


9322

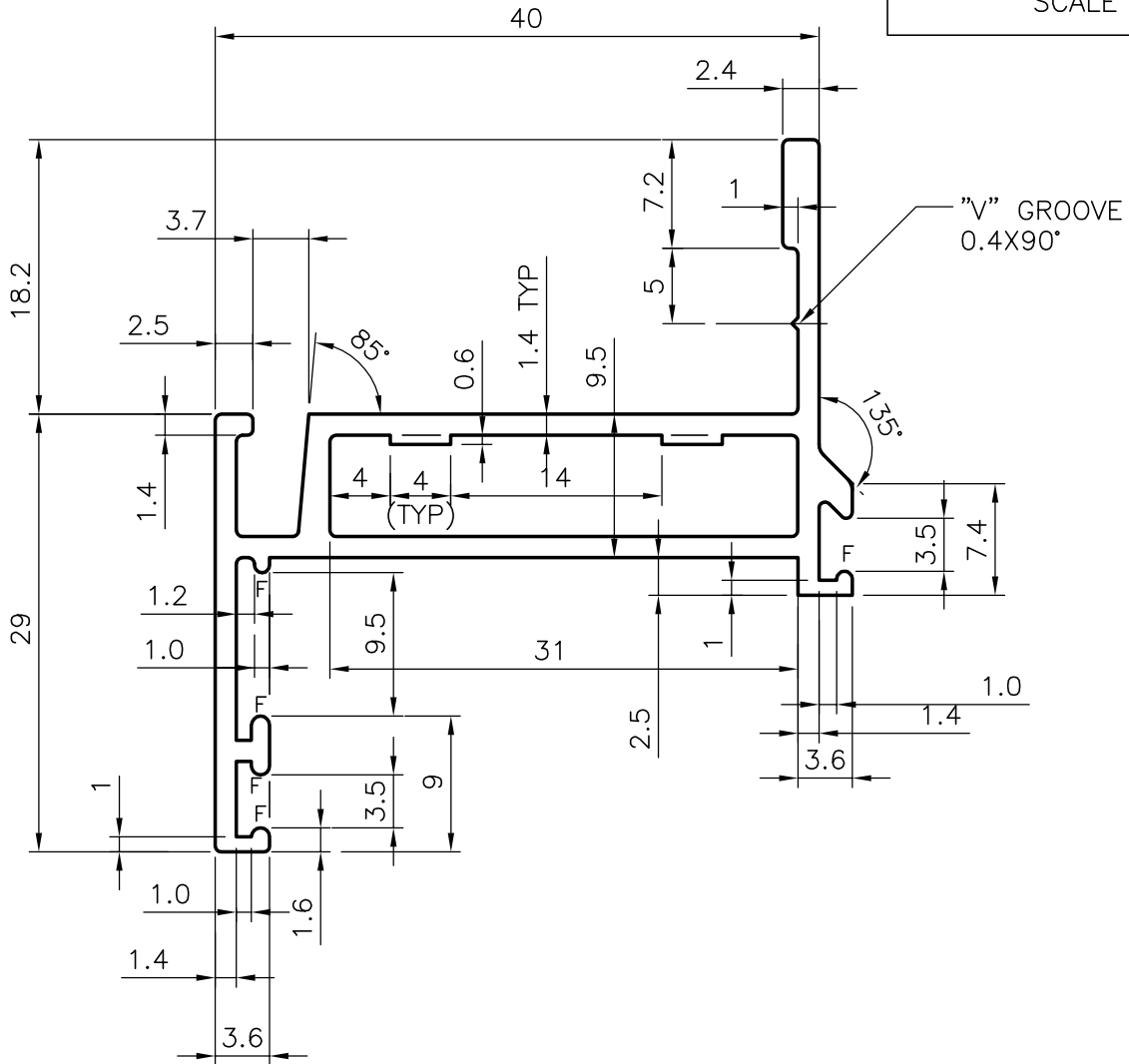
12565

20918

NOTE:-
 1. UNSPECIFIED WALL THICKNESS :-1.4 mm
 2..F=FULL RADII (5-PLCS)



SCALE 1:1



SYMBOL OF QUALITY
 AN ISO 9002 COMPANY

JINDAL ALUMINIUM LTD.
 BANGALORE-560073 (INDIA)

NAME DATE

DRAWN RAGHAVENDRA 07-04-01

CHECKED

APPROVED

SCALE 2:1 & 1:1

WEIGHT kg/m 0.606

SECTION No. 20918

DRAWING No.

20918

1. ALL DIMENSIONS ARE IN mm.
2. ROUND OFF ALL SHARP CORNERS WITH 0.40 mm.
3. TOLERANCES WILL BE AS PER IS 6477-1983 UNLESS OTHERWISE SPECIFIED

PARTY'S NAME GENERAL CATEGORY ., CALCUTTA MARKET

PARTY'S DRAWING No. AS PER SPECIFICATION (SAMPLE NO 9148)

ALLOY & TEMPER HE9 WP

DESCRIPTION "Z "SHUTTER 40 SERIES SECTION