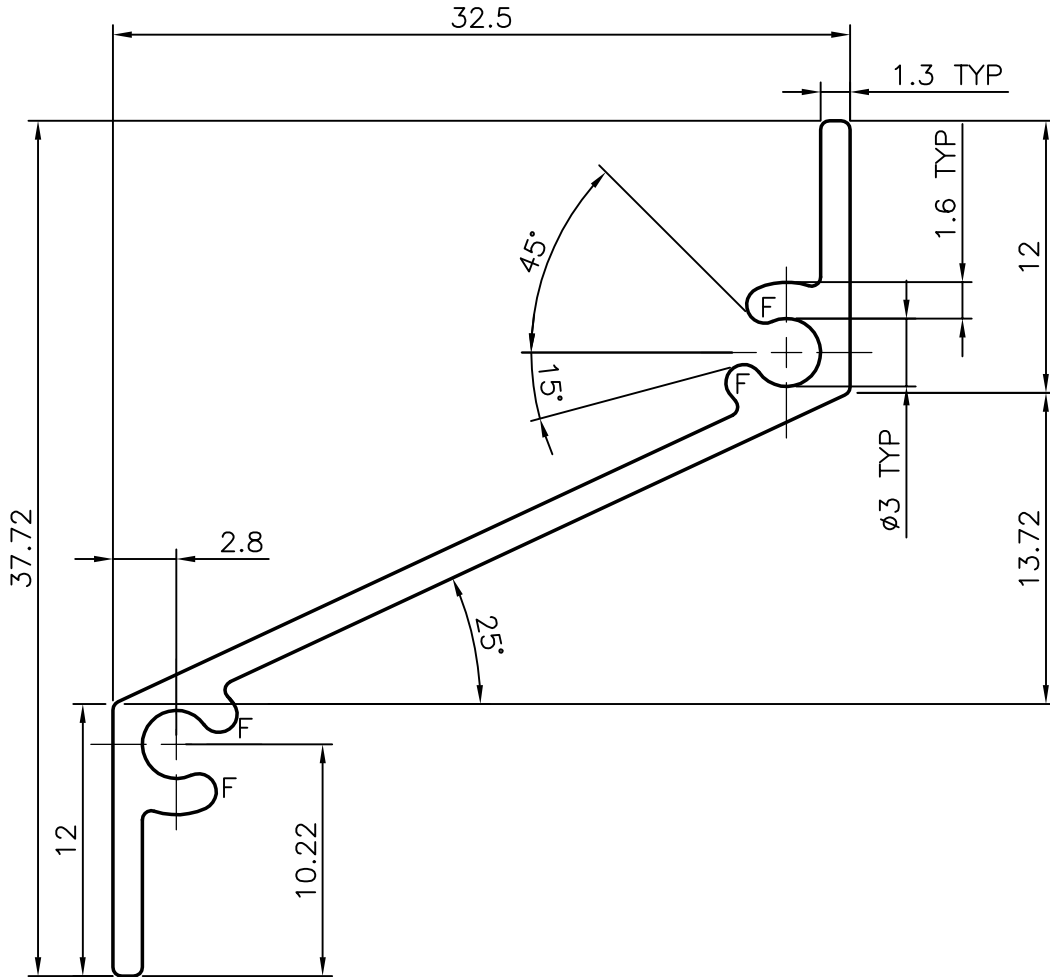
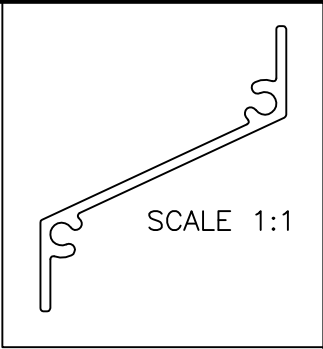



S661
9375
12582
20970



- NOTE:- 1. GENERAL WALL THICKNESS = 1.3 mm
 2. F= FULL RADIUS (4 PLACES)
 3. UNSPECIFIED RADII= 0.50 mm.

 SYMBOL OF QUALITY AN ISO 9001 COMPANY	JINDAL ALUMINIUM LTD. BANGALORE-560073 (INDIA)	DRAWN	NAME	DATE
		CHECKED	PRASANN.H	27-12-2006
1. ALL DIMENSIONS ARE IN mm. 2. ROUND OFF ALL SHARP CORNERS WITH 0.50 mm. 3. TOLERANCES WILL BE AS PER IS:3965-1981 UNLESS OTHERWISE SPECIFIED		APPROVED		
		SCALE		3:1
PARTY'S NAME ALMECH ENTERPRISES., MUMBAI		AREA	mm ²	91.729
		PERIMETER	mm.	132.047
PARTY'S DRAWING No. AS PER DRAWING		WEIGHT	kg/m	0.248
		DRAWING No.	SECTION No.	
ALLOY & TEMPER HE9 WP		S661	S661	
		9375	9375	
DESCRIPTION LOWER SECTION		12582	12582	
		20970	20970	