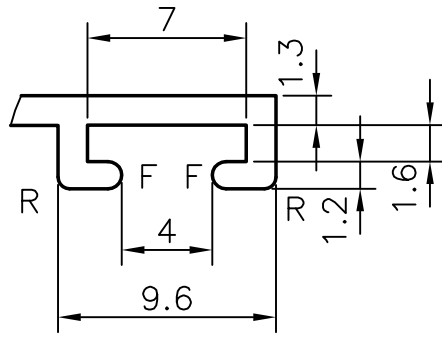


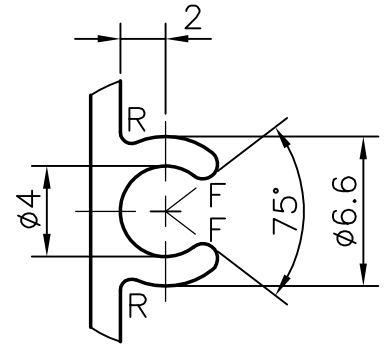
P-4178

9398

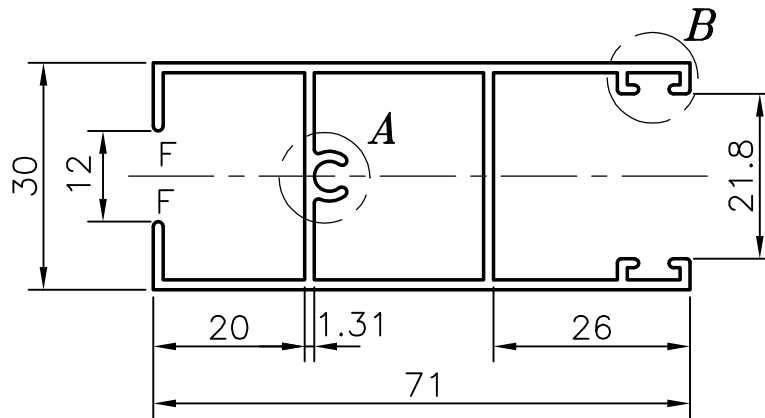
20993



**DETAIL 'B'**  
(3:1)



**DETAIL 'B'**  
(3:1)



1. GENERAL WALL THICKNESS:- 1.31 mm.
2. F = FULL RADIUS (8)
3. R = 0.50 RADIUS (6)



SYMBOL OF QUALITY  
AN ISO 9002 COMPANY

**JINDAL ALUMINIUM LTD.**  
**BANGALORE-560073 (INDIA)**

	NAME	DATE
DRAWN	R.D.Sharma	22-03-03
CHECKED		
APPROVED		
SCALE	1:1 & 3:1	
AREA mm <sup>2</sup>	310.6	
PERIMETER mm.	355	
WEIGHT kg/m	0.839	
SECTION No.	20993	
DRAWING No.	20993	

1. ALL DIMENSIONS ARE IN mm.
2. ROUND OFF ALL SHARP CORNERS WITH 0.40 mm.
3. TOLERANCES WILL BE AS PER IS 6477-1983 UNLESS OTHERWISE SPECIFIED

PARTY'S NAME	TOM ALUMINIUM L.L.C., UAE
PARTY'S DRAWING No.	2805 (LIGHTER OF OUR SECTION NO. 8864)
ALLOY & TEMPER	HE9 WP
DESCRIPTION	WINDOW SECTION