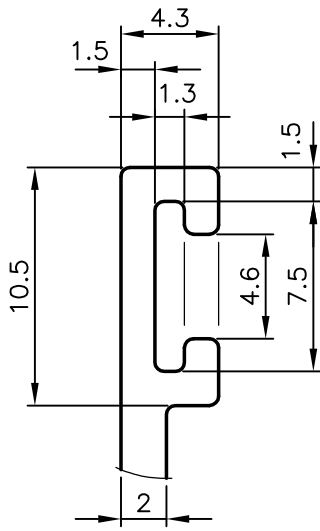


P-5523

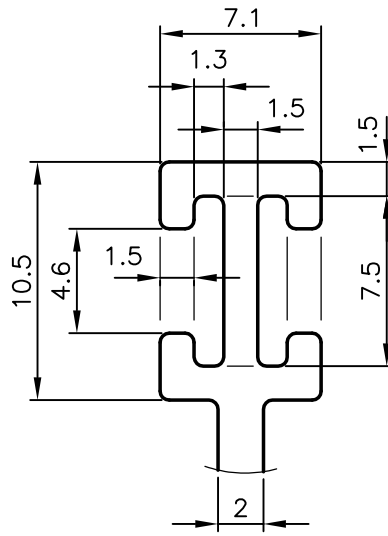
21098

1. GENERAL WALL THICKNESS:- 2.0 mm.

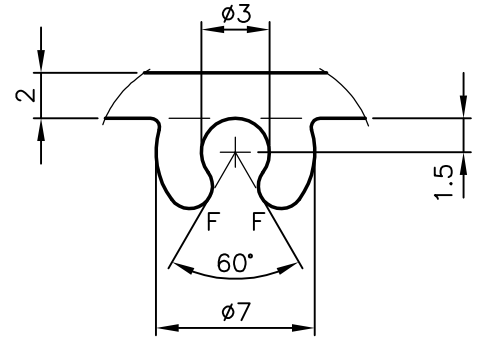
2. F = FULL RADIUS (8 PLACES)



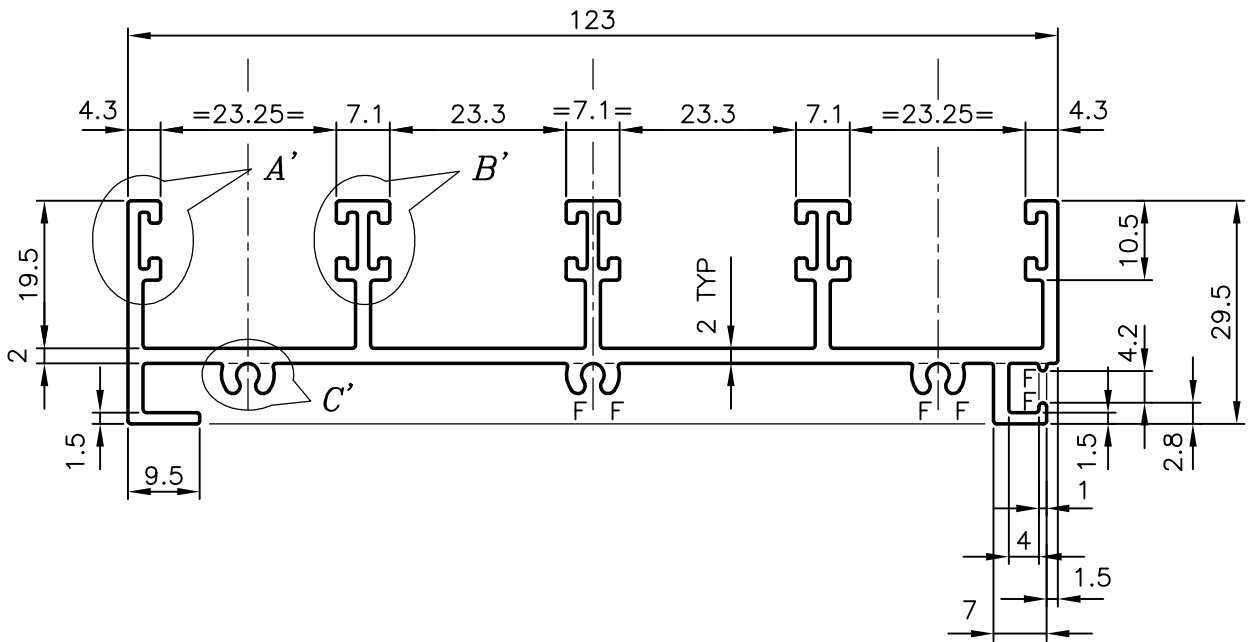
DETAIL-A



DETAIL-B



DETAIL-C



SYMBOL OF QUALITY  
AN ISO 9001 COMPANY

**JINDAL ALUMINIUM LTD.**  
BANGALORE-560073 (INDIA)

	NAME	DATE
DRAWN	MALINGAPPA	27-05-2005
CHECKED		
APPROVED		

1. ALL DIMENSIONS ARE IN mm.
2. ROUND OFF ALL SHARP CORNERS WITH 0.40 mm.
3. TOLERANCES WILL BE AS PER IS:3965-1981 UNLESS OTHERWISE SPECIFIED

SCALE	1:1 & 3:1
AREA mm <sup>2</sup>	618.419
PERIMETER mm.	657.578
WEIGHT kg/m	1.670

PARTY'S NAME	GENERAL CATEGORY, KOLKATA MARKET
PARTY'S DRAWING No.	HEAVIER OF SECTION NO. 20911
ALLOY & TEMPER	HE9 WP
DESCRIPTION	4-TRACK TOP

DRAWING No.	SECTION No.
P-5523	-
21098	21098