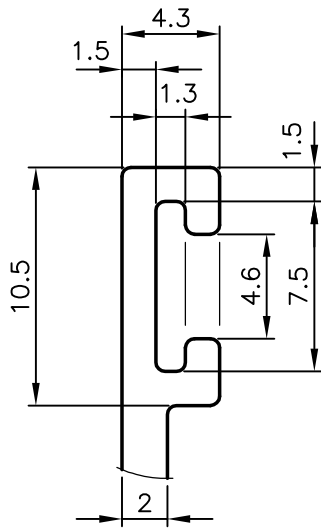


P-5525

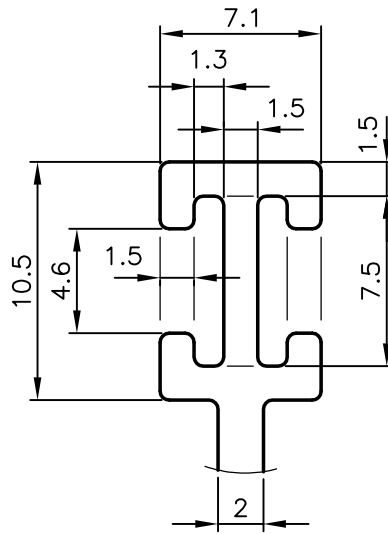
21099

1. GENERAL WALL THICKNESS:- 2.0 mm.

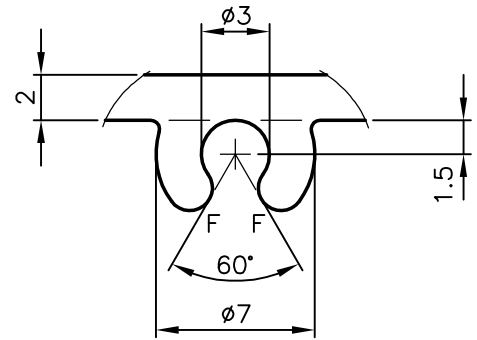
2. F = FULL RADIUS (8 PLACES)



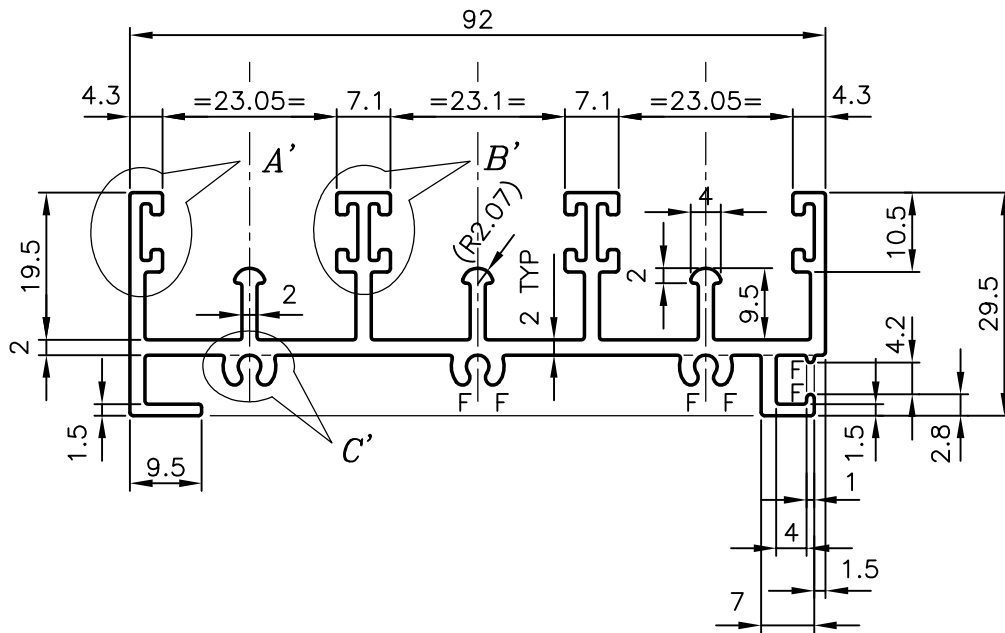
DETAIL-A



DETAIL-B



DETAIL-C



SYMBOL OF QUALITY
AN ISO 9001 COMPANY

JINDAL ALUMINIUM LTD.
BANGALORE-560073 (INDIA)

	NAME	DATE
DRAWN	MALINGAPPA	27-05-2005
CHECKED		
APPROVED		

1. ALL DIMENSIONS ARE IN mm.
2. ROUND OFF ALL SHARP CORNERS WITH 0.40 mm.
3. TOLERANCES WILL BE AS PER IS:3965-1981 UNLESS OTHERWISE SPECIFIED

SCALE	1:1 & 3:1
AREA mm ²	561.562
PERIMETER mm.	588.648
WEIGHT kg/m	1.516

PARTY'S NAME	GENERAL CATEGORY, KOLKATA MARKET
PARTY'S DRAWING No.	HEAVIER OF SECTION NO. 21055
ALLOY & TEMPER	HE9 WP
DESCRIPTION	3-TRACK BOTTOM

DRAWING No.	SECTION No.
P-5525	-
21099	21099