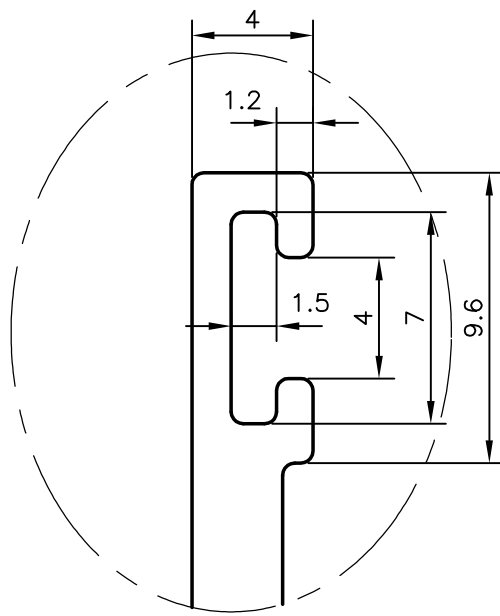


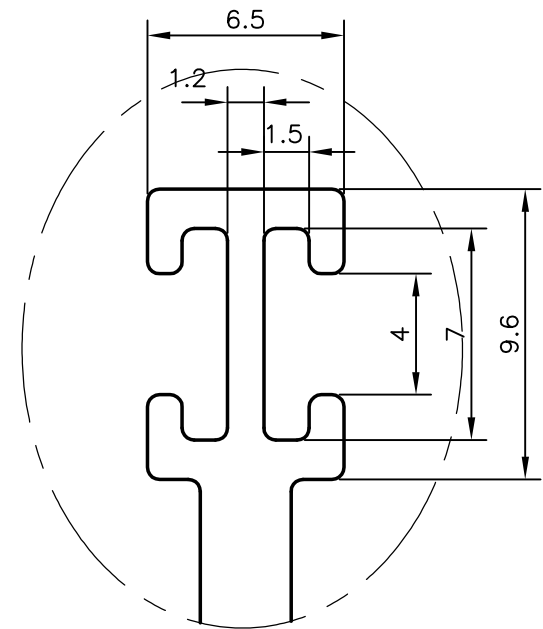
P-6228-1

21124



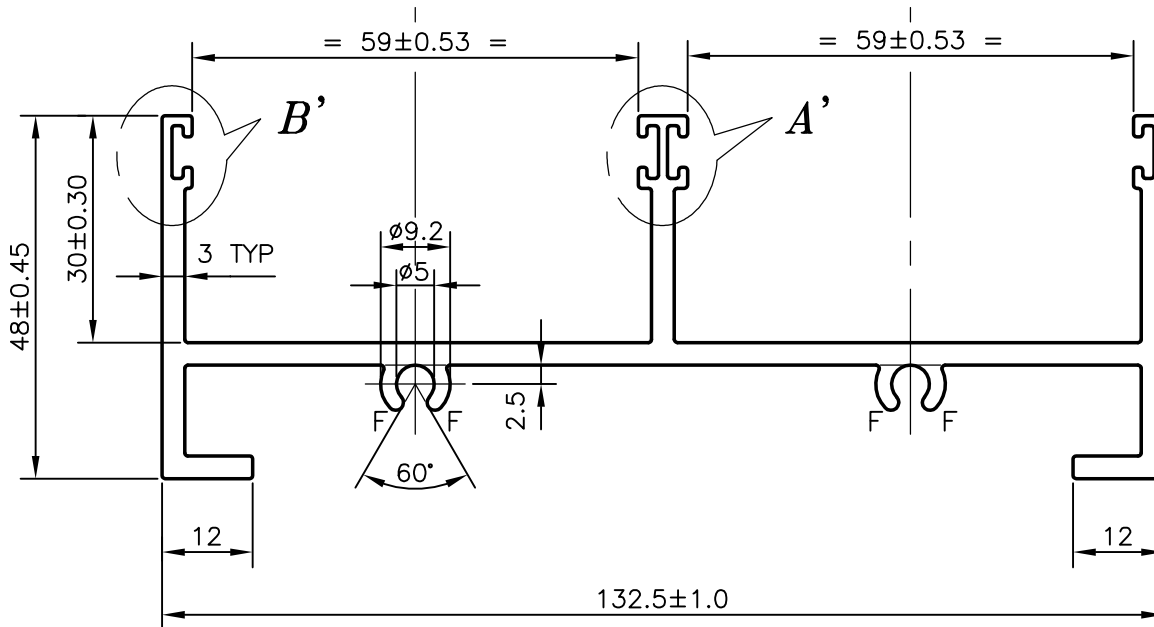
DETAIL-A

SCALE:-4:1



DETAIL-B

SCALE:-4:1



1. ALL THE SURFACE TO BE TREATED AS EXPOSED SURFACES
2. F = FULL RADIUS (4 PLACES)
3. GENERAL WALL THICKNESS:- 3 ±0.30 mm.
4. UNSPECIFIED DIMENSIONAL TOLERANCES WILL BE:- 0.20 mm.
5. SECTION MATING WITH 21121



SYMBOL OF QUALITY
AN ISO 9001 COMPANY

JINDAL ALUMINIUM LTD.
BANGALORE-560073 (INDIA)

	NAME	DATE
DRAWN	MALINGAPPA	14-03-2006
CHECKED		
APPROVED		

1. ALL DIMENSIONS ARE IN mm.
2. ROUND OFF ALL SHARP CORNERS WITH 0.40 mm.
3. TOLERANCES WILL BE AS PER IS:3965-1981 UNLESS OTHERWISE SPECIFIED

SCALE	1:1
AREA mm ²	856.949
PERIMETER mm.	636.246
WEIGHT kg/m	2.314

PARTY'S NAME	GENERAL CATEGORY, MUMBAI MARKET
PARTY'S DRAWING No.	AX-2402-27
ALLOY & TEMPER	6063 T5
DESCRIPTION	2 TRACK SHUTTER TOP AND JAMB

DRAWING No.	SECTION No.
P-6228-1	-
21124	21124