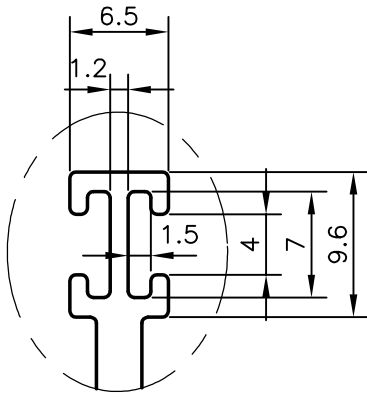


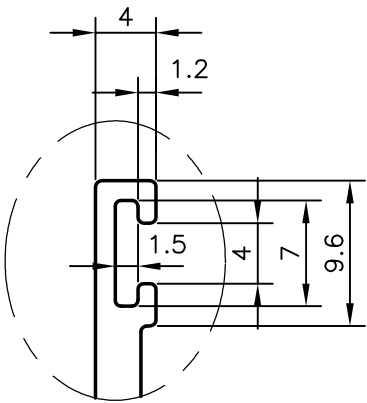
P-6230-1

21126



DETAIL-A

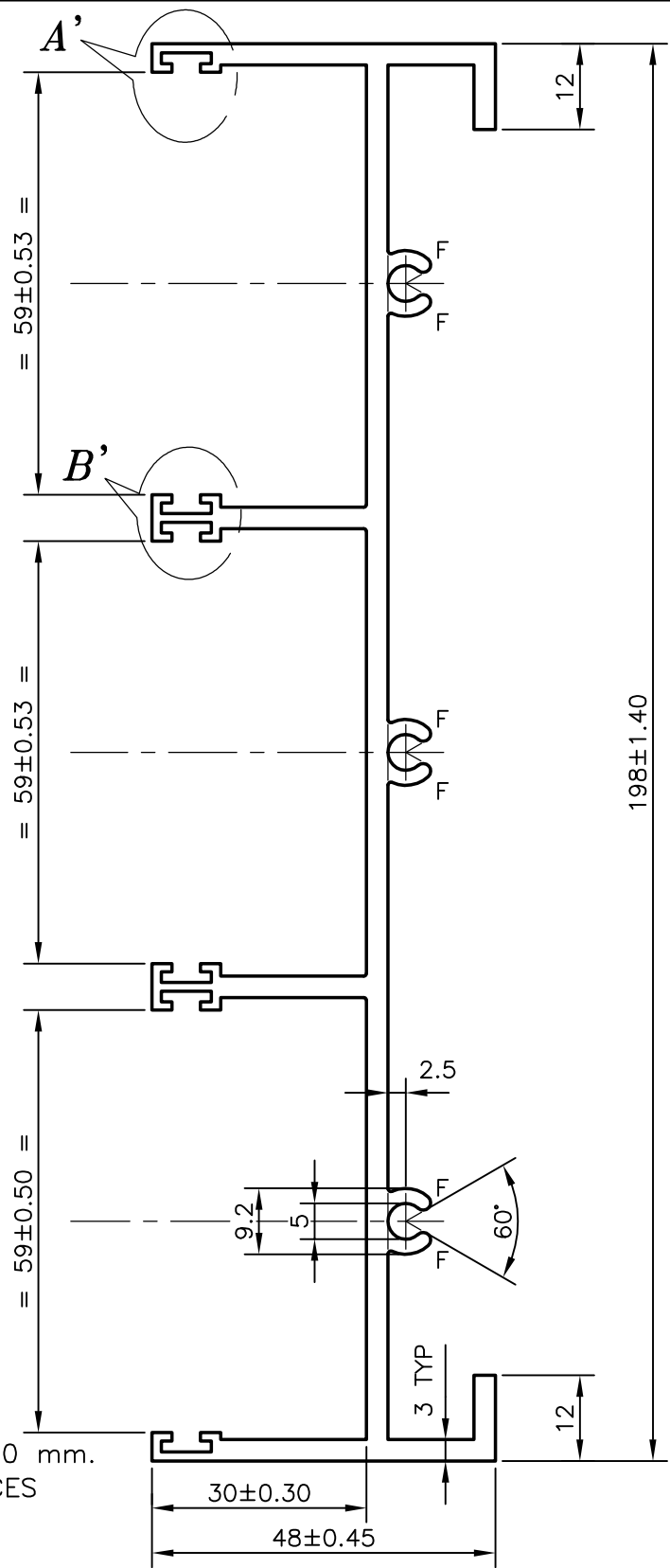
SCALE:-2:1



DETAIL-B

SCALE:-2:1

1. ALL THE SURFACE TO BE TREATED AS EXPOSED SURFACES
2. F = FULL RADIUS (6 PLACES)
3. GENERAL WALL THICKNESS:- 3 ± 0.30 mm.
4. UNSPECIFIED DIMENSIONAL TOLERANCES WILL BE:- 0.20 mm.
5. SECTION MATING WITH 21122



SYMBOL OF QUALITY
AN ISO 9001 COMPANY

JINDAL ALUMINIUM LTD.
BANGALORE-560073 (INDIA)

	NAME	DATE
DRAWN	MALINGAPPA	14-03-2006
CHECKED		
APPROVED		
SCALE	1:1	
AREA mm ²	1173.916	
PERIMETER mm.	888.034	
WEIGHT kg/m	3.170	
DRAWING No.	SECTION No.	
P-6230-1	-	
21126	21126	

1. ALL DIMENSIONS ARE IN mm.
2. ROUND OFF ALL SHARP CORNERS WITH 0.40 mm.
3. TOLERANCES WILL BE AS PER IS:3965-1981 UNLESS OTHERWISE SPECIFIED

PARTY'S NAME	GENERAL CATEGORY, MUMBAI MARKET
PARTY'S DRAWING No.	AX-2402-30
ALLOY & TEMPER	6063 T5
DESCRIPTION	3 TRACK SHUTTER TOP AND JAMB