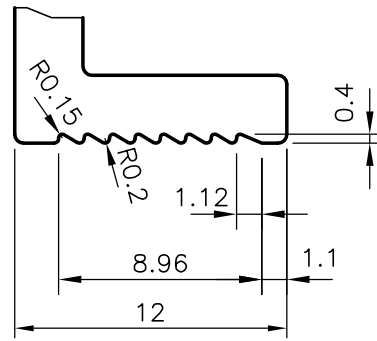


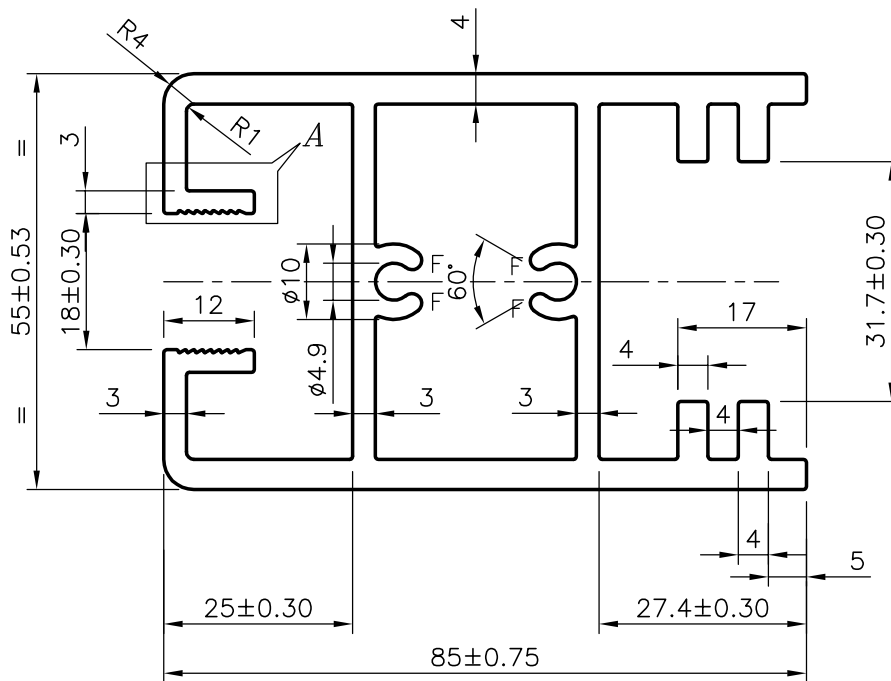
P-6243-1

21130



DETAIL AT-A

SCALE:- 3:1



1. ALL THE SURFACE TO BE TREATED AS EXPOSED SURFACES
2. F = FULL RADIUS (4 PLACES)
3. UNSPECIFIED DIMENSIONAL TOLERANCES WILL BE:- 0.20 mm.



SYMBOL OF QUALITY
AN ISO 9001 COMPANY

JINDAL ALUMINIUM LTD.
BANGALORE-560073 (INDIA)

	NAME	DATE
DRAWN	MALINGAPPA	16-03-2006
CHECKED		
APPROVED		
SCALE	1:1	
AREA mm ²	1280.612	
PERIMETER mm.	535.844	
WEIGHT kg/m	3.458	
DRAWING No.	SECTION No.	
P-6243-1	-	
21130	21130	

1. ALL DIMENSIONS ARE IN mm.
2. ROUND OFF ALL SHARP CORNERS WITH 0.40 mm.
3. TOLERANCES WILL BE AS PER IS:6477-1983 UNLESS OTHERWISE SPECIFIED

PARTY'S NAME	GENERAL CATEGORY MUMBAI MARKET
PARTY'S DRAWING No.	AX-2402-34
ALLOY & TEMPER	6063 T5
DESCRIPTION	WINDOW SECTION-BOTTOM SHUTTER