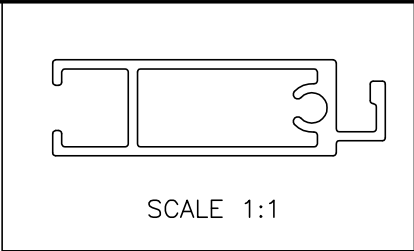
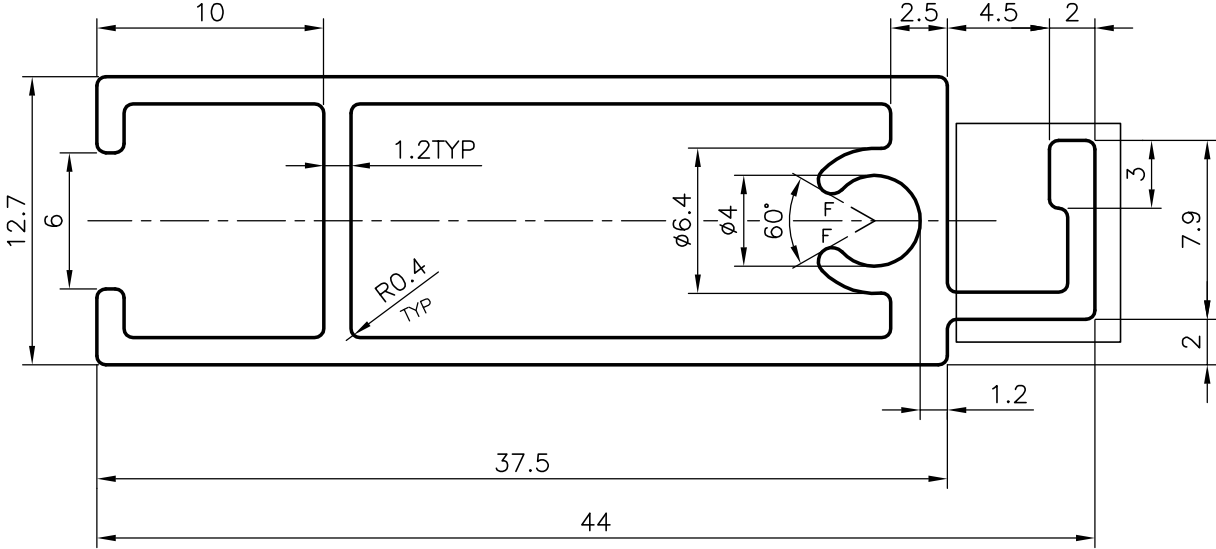



P-5667
S1545
21154



GENERAL WALL THICKNESS = 1.20mm
 F = FULL RADIUS (2 PLACES)



ISSUE-2 - □ MARKED PORTION ADDED

 SYMBOL OF QUALITY AN ISO 9001 COMPANY	JINDAL ALUMINIUM LTD. BANGALORE-560073 (INDIA)	NAME		DATE
		DRAWN	MALINGAPPA	21-09-2005
1. ALL DIMENSIONS ARE IN mm. 2. ROUND OFF ALL SHARP CORNERS WITH 0.40 mm. 3. TOLERANCES WILL BE AS PER IS:6477-1983 UNLESS OTHERWISE SPECIFIED		CHECKED		
		APPROVED		
PARTY'S NAME B.L.KASHYAP & SONS LIMITED, BANGALORE		SCALE		3:1
		AREA mm ²		155.975
PARTY'S DRAWING No. AS PER SAMPLE		PERIMETER mm.		153.566
		WEIGHT kg/m		0.421
ALLOY & TEMPER HE9 WP		DRAWING No.		SECTION No.
		P-5667		-
DESCRIPTION WINDOW SHUTTER SECTION		S1545		S1545 ISSUE-2
		21154		21154