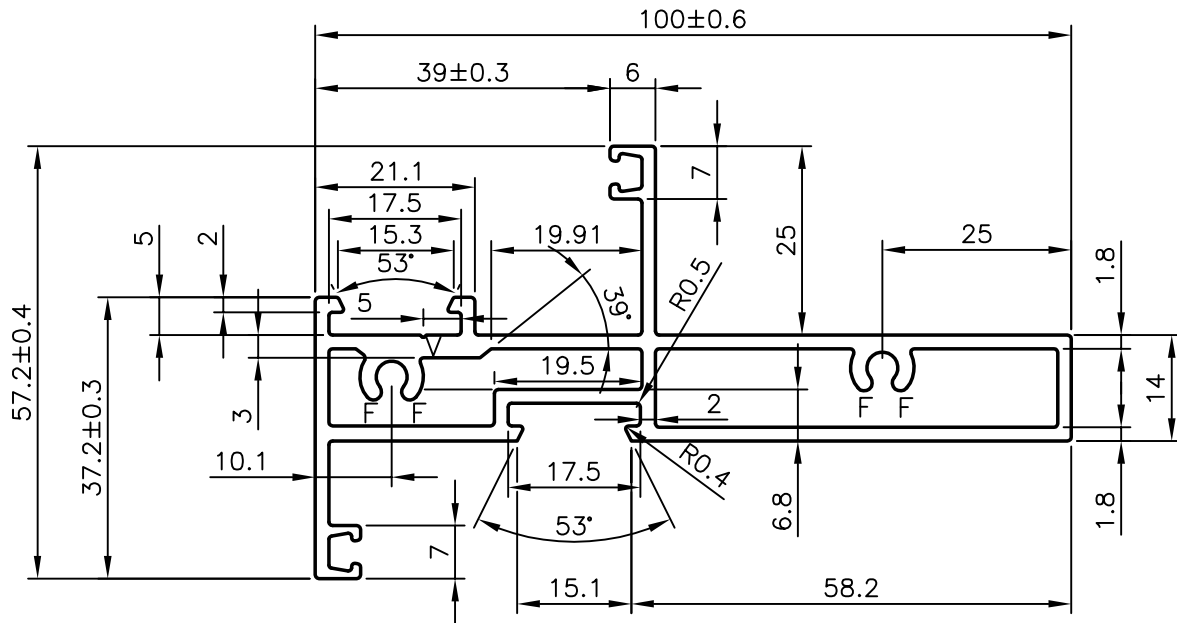
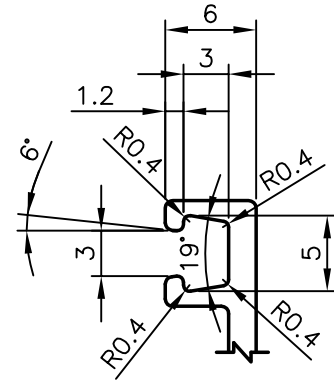
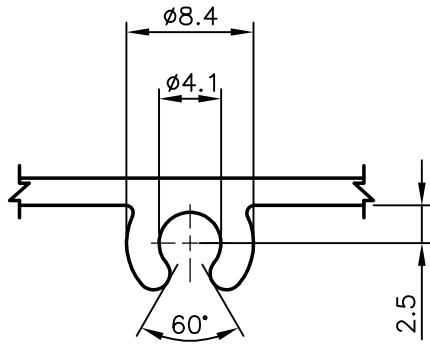


P-6931-1

21192

-



**NOTE:-**

1. GENERAL WALL THICKNESS IS 1.8±0.2 mm
2. F= FULL RADIUS (4 PLACES)
3. UNSPECIFIED RADII IS 0.50 mm
4. V = 0.3x90° (1 PLACE)



SYMBOL OF QUALITY  
AN ISO 9001 COMPANY

**JINDAL ALUMINIUM LTD.**  
BANGALORE-560073 (INDIA)

	NAME	DATE
DRAWN	PRASANNA.H.	12-01-2007
CHECKED		
APPROVED		

1. ALL DIMENSIONS ARE IN mm.
2. ROUND OFF ALL SHARP CORNERS WITH 0.40 mm.
3. TOLERANCES WILL BE AS PER DIN17615-PART3 UNLESS OTHERWISE SPECIFIED

SCALE	1:1
AREA mm <sup>2</sup>	626.173
PERIMETER mm.	389.327
WEIGHT kg/m	1.691

PARTY'S NAME	GENERAL CATEGORY, MUMBAI MARKET
PARTY'S DRAWING No.	FIX/04
ALLOY & TEMPER	6063-T6
DESCRIPTION	MULLION / TRANSOM PROFILE

DRAWING No.	SECTION No.
P-6931-1	-
21192	21192
-	-