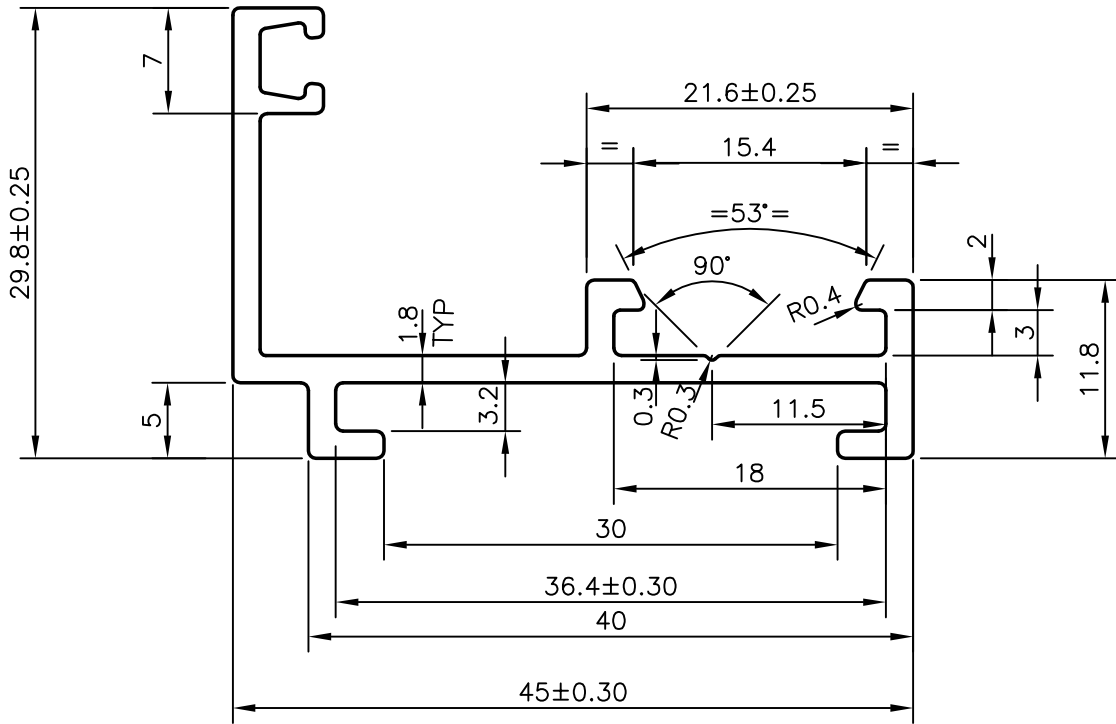
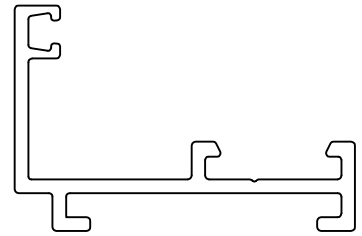
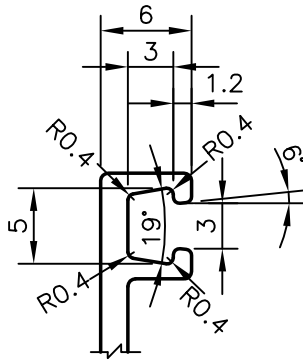


P-6936-1

21196



GENERAL WALL THICKNESS:- 1.80±0.20 mm
 UNSPECIFIED RADII 0.5 mm



SYMBOL OF QUALITY
 AN ISO 9002 COMPANY

JINDAL ALUMINIUM LTD.
 BANGALORE-560073 (INDIA)

	NAME	DATE
DRAWN	J.P.KAUSHIK	13-01-2007
CHECKED		
APPROVED		
SCALE		2:1
AREA mm ²		188.452
PERIMETER mm.		212.714
WEIGHT kg/m		0.509
DRAWING No.	SECTION No.	
P-6936-1	-	
21196	21196	

1. ALL DIMENSIONS ARE IN mm.
2. ROUND OFF ALL SHARP CORNERS WITH 0.40 mm.
3. TOLERANCES WILL BE AS PER DIN 17615-PART-3 UNLESS OTHERWISE SPECIFIED

PARTY'S NAME	GENERAL CATEGORY, MUMBAI MARKET
PARTY'S DRAWING No.	FIX/01
ALLOY & TEMPER	HE9 WP
DESCRIPTION	OUTER FRAME (FIXED)