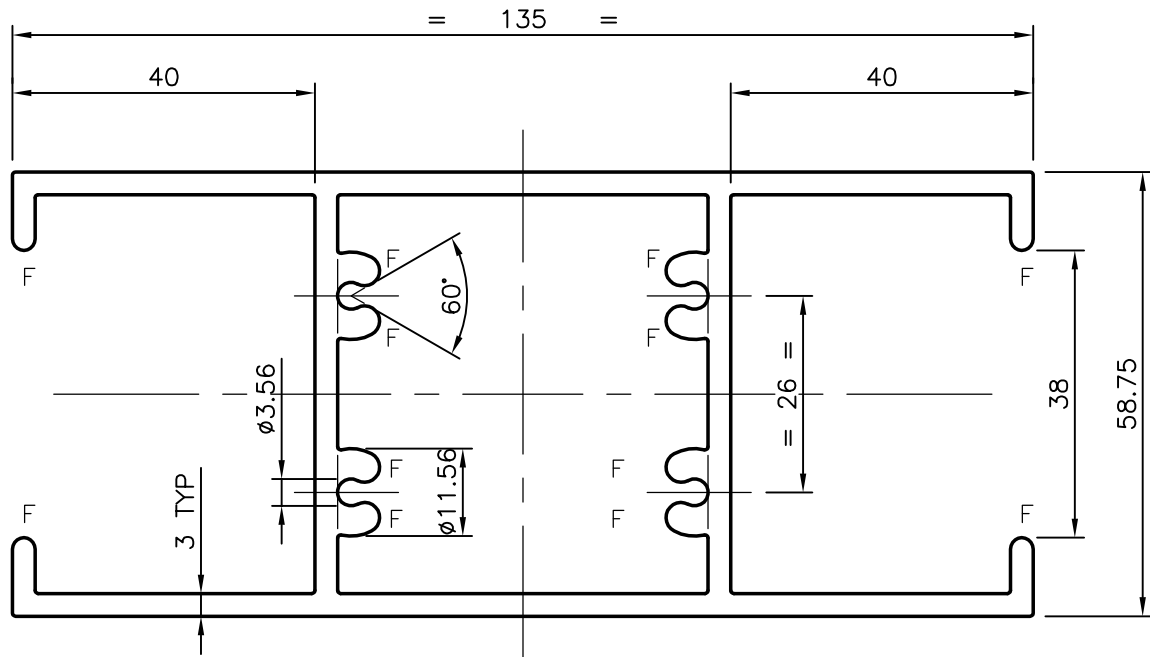


P-6082

X500

21260



GENERAL WALL THICKNESS = 3 mm  
 F = FULL RADIUS (12 PLACES)



SYMBOL OF QUALITY  
 AN ISO 9001 COMPANY

**JINDAL ALUMINIUM LTD.**  
 BANGALORE-560073 (INDIA)

|                      | NAME         | DATE        |
|----------------------|--------------|-------------|
| DRAWN                | MAHALINGAPPA | 26-12-2005  |
| CHECKED              |              |             |
| APPROVED             |              |             |
| SCALE                |              | 1:1         |
| AREA mm <sup>2</sup> |              | 1382.472    |
| PERIMETER mm.        |              | 599.289     |
| WEIGHT kg/m          |              | 3.733       |
| DRAWING No.          |              | SECTION No. |
| P-6082               |              | -           |
| X500                 |              | X500        |
| 21260                |              | 21260       |

1. ALL DIMENSIONS ARE IN mm.
2. ROUND OFF ALL SHARP CORNERS WITH 0.40 mm.
3. TOLERANCES WILL BE AS PER IS:6477-1983 UNLESS OTHERWISE SPECIFIED

|                     |                             |
|---------------------|-----------------------------|
| PARTY'S NAME        | AMMYS ALUMINIUM, MUMBAI     |
| PARTY'S DRAWING No. | AS PER SKETCH & REQUIREMENT |
| ALLOY & TEMPER      | HE9 WP                      |
| DESCRIPTION         | TOP & BOTTOM WINDOW SECTION |