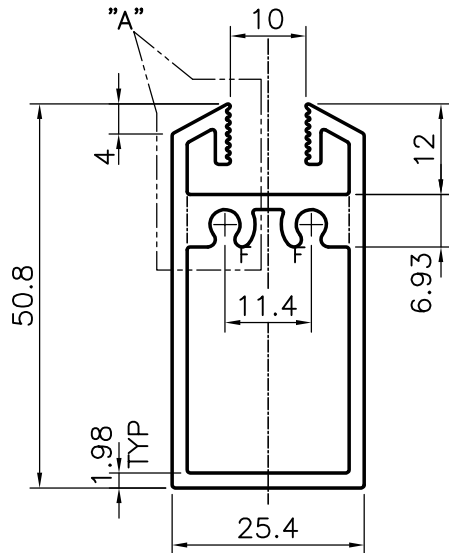
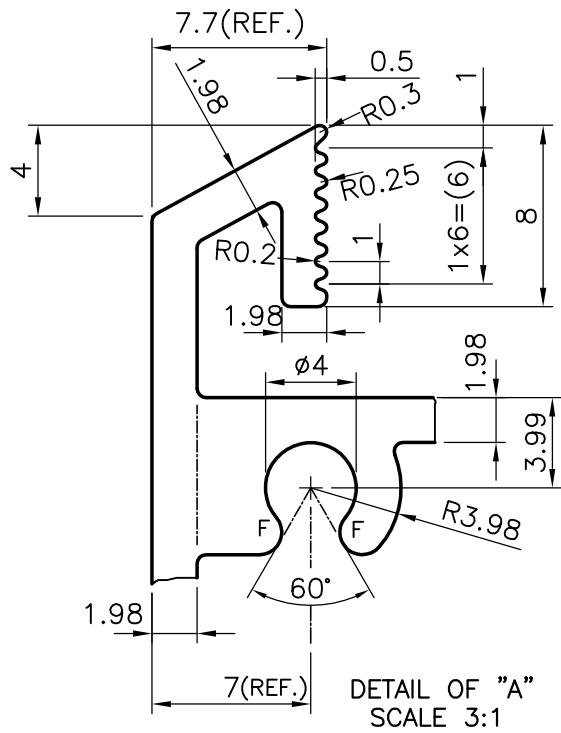



|         |
|---------|
| P-11100 |
| S3035   |
| 21361   |



F= FULL RADIUS ( 4 PLACES)

|   |  |                      |             |             |
|---|--|----------------------|-------------|-------------|
| <br>SYMBOL OF QUALITY<br>AN ISO 9002 COMPANY                     | <b>JINDAL ALUMINIUM LTD.</b><br>BANGALORE-560073 (INDIA) | DRAWN                | J.P.KAUSHIK | 18-07-2011  |
|   |  | CHECKED              |             |             |
| 1. ALL DIMENSIONS ARE IN mm.<br>2. ROUND OFF ALL SHARP CORNERS WITH 0.40 mm.<br>3. TOLERANCES WILL BE AS PER BS:EN-755-9 UNLESS OTHERWISE SPECIFIED |  | APPROVED             | S.S.GARG    | 22-08-2011  |
|   |  | SCALE                |             | 1:1         |
| PARTY'S NAME<br>UNITY INFRAPROJECTS LTD., MUMBAI  |  | AREA mm <sup>2</sup> |             | 370.87      |
|   |  | PERIMETER mm.        |             | 214.228     |
| PARTY'S DRAWING No.<br>AS PER 20715   |  | WEIGHT kg/m          |             | 1.003       |
|   |  | DRAWING No.          | P-11100     | SECTION No. |
| ALLOY & TEMPER<br>HE9 WP  |  |                      |             |             |
|   |  |                      | S3035       | S3035       |
| DESCRIPTION<br>WINDOW SECTION   |  |                      |             |             |
|   |  |                      | 21361       | 21361       |