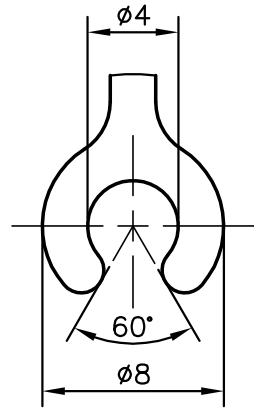


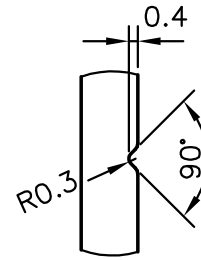
P-9559

S2347

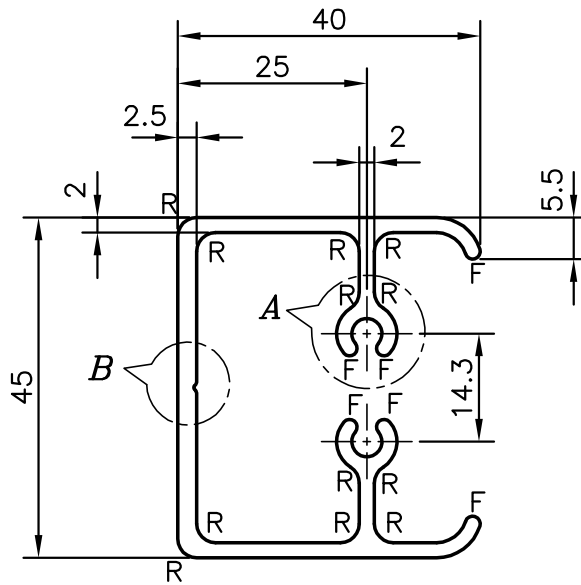
21383



DETAIL AT 'A'  
(SCALE:- 3:1)



DETAIL AT 'B'  
(SCALE:- 3:1)



- 1. R = 2.5 mm. RADIUS (12)
- 2. F = FULL RADIUS (6)



SYMBOL OF QUALITY  
AN ISO 9001 COMPANY

**JINDAL ALUMINIUM LTD.**  
BANGALORE-560073 (INDIA)

	NAME	DATE
DRAWN	RAGHAVENDRA	19-10-2009
CHECKED		
APPROVED		

- 1. ALL DIMENSIONS ARE IN mm.
- 2. ROUND OFF ALL SHARP CORNERS WITH 0.40 mm.
- 3. TOLERANCES WILL BE AS PER IS:3965-1981 UNLESS OTHERWISE SPECIFIED

SCALE	1:1 & 3:1
AREA mm <sup>2</sup>	373.055
PERIMETER mm.	336.87
WEIGHT kg/m	1.007

PARTY'S NAME SP FABRICATORS PVT. LTD., NAVI MUMBAI

DRAWING No. SECTION No.

PARTY'S DRAWING No. AL-634

P-9559 -

ALLOY & TEMPER 6063 T6

S2347 S2347

21383 21383

DESCRIPTION EXPANSION JOINT SECTION