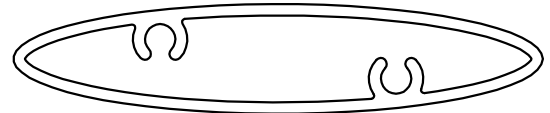


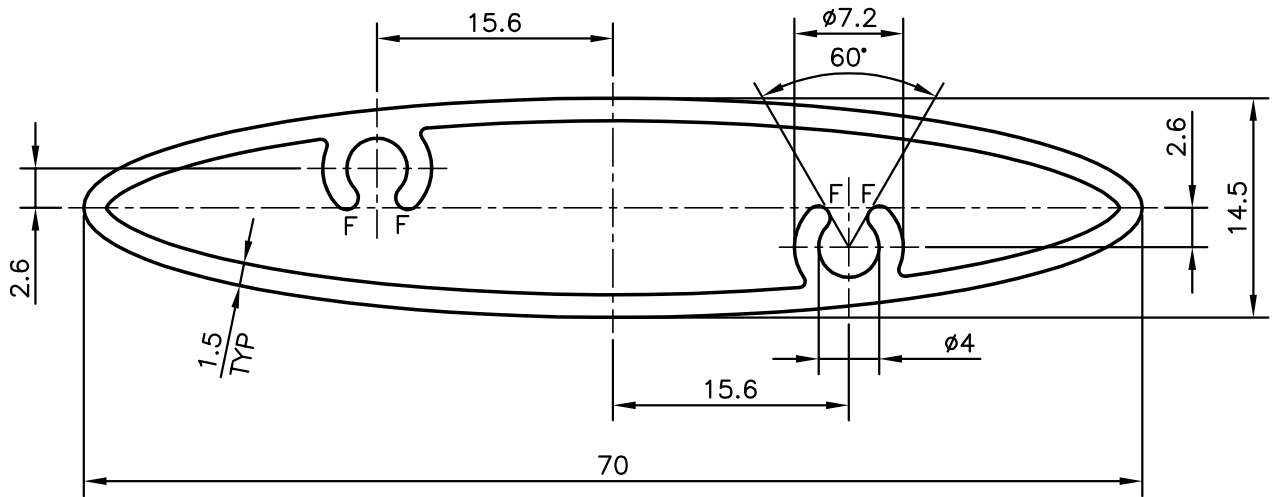
P-10239-1

S2649

21450



SCALE 1:1



ALL OVER UNIFORM THICKNESS MAINTAINED  
F = FULL RADIUS (4 PLACES)



SYMBOL OF QUALITY  
AN ISO 9001 COMPANY

**JINDAL ALUMINIUM LTD.**  
BANGALORE-560073 (INDIA)

	NAME	DATE
DRAWN	J.P.KAUSHIK	04-08-2010
CHECKED		
APPROVED	S.S.GARG	17-08-2010

1. ALL DIMENSIONS ARE IN mm.
2. ROUND OFF ALL SHARP CORNERS WITH 0.40 mm.
3. TOLERANCES WILL BE AS PER IS:6477-1983 UNLESS OTHERWISE SPECIFIED

SCALE	2:1
AREA mm <sup>2</sup>	250.973
PERIMETER mm.	147.479
WEIGHT kg/m	0.678

PARTY'S NAME	GWS ENGINEERS & FABRICATORS PVT.LTD.,MUMBAI	DRAWING No.	P-10239-1	SECTION No.	-
PARTY'S DRAWING No.	GWS-CAPT-A3-DIE-DRG. NO.: -14	S2649	S2649		
ALLOY & TEMPER	HE9 WP	21450	21450		
DESCRIPTION	SUN SHED BLADE (LOUVER SECTION)				