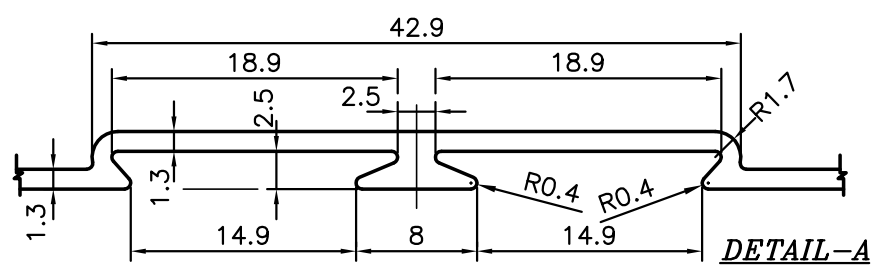
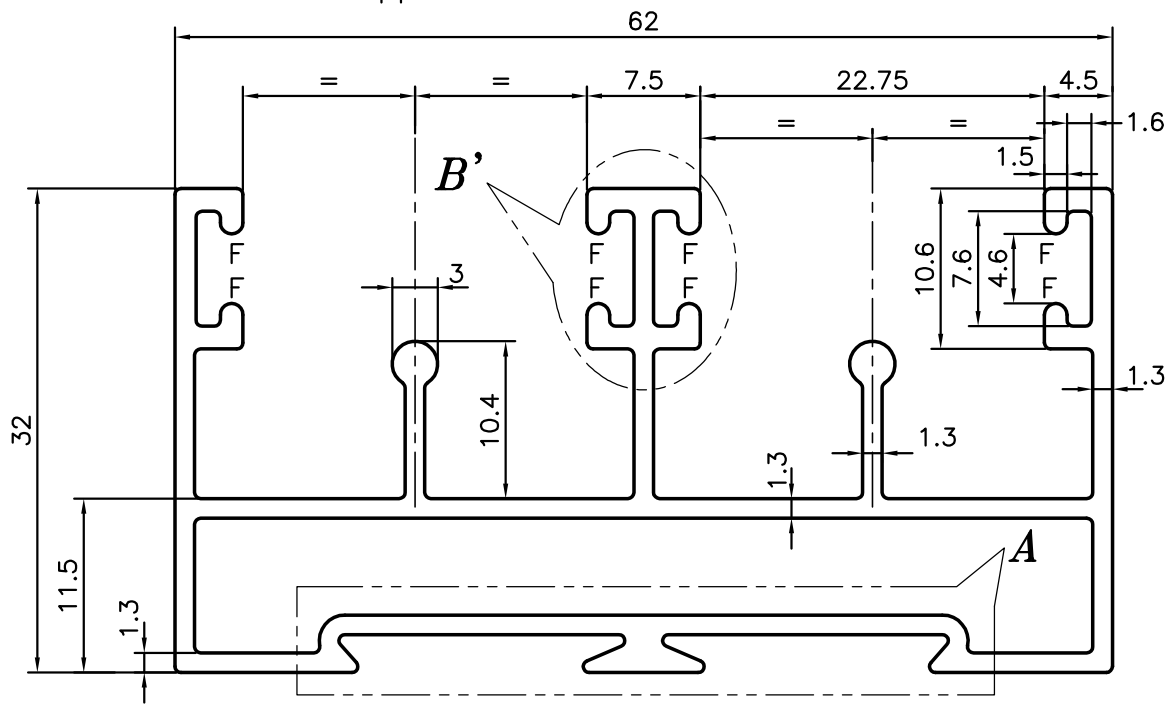
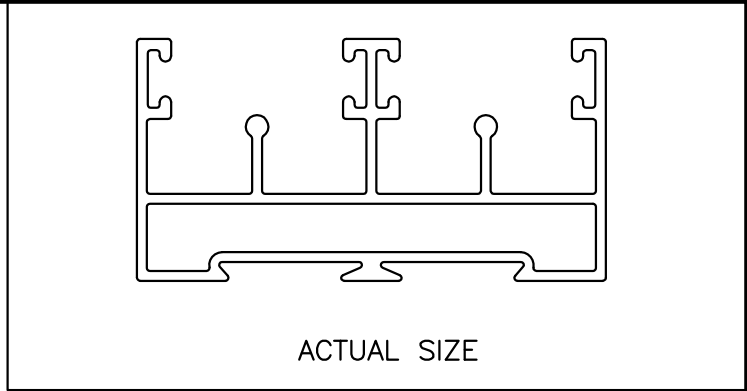
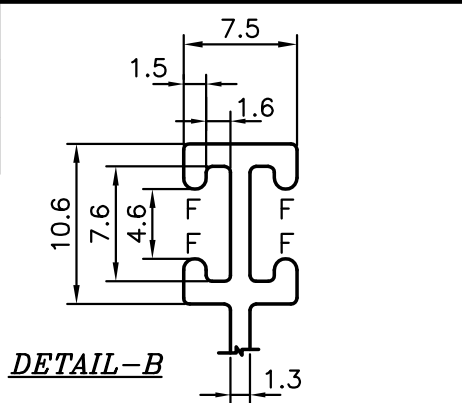


P-12716-1  
S3758  
21452



WEIGHT RANGE: - +0%  
-6%

WEIGHT RANGE: -0.956 TO 1.017 kg/M

F = RADII FULL (8 PLACES)

TOLERANCES ON OVERALL WIDTHS & WIDTHS ACROSS FLATS OF BARS, & REGULAR SECTIONS

UPTO 6.40mm - ±0.20	UPTO 32.0mm - ±0.38	UPTO 120.0mm - ±0.85	UPTO 320.00mm - ±1.70
UPTO 10.0mm - ±0.23	UPTO 50.0mm - ±0.46	UPTO 160.0mm - ±1.02	
UPTO 12.0mm - ±0.25	UPTO 60.0mm - ±0.53	UPTO 200.0mm - ±1.14	
UPTO 16.0mm - ±0.28	UPTO 80.0mm - ±0.69	UPTO 250.0mm - ±1.40	
UPTO 25.0mm - ±0.30	UPTO 100.0mm - ±0.75	UPTO 300.0mm - ±1.65	

	<b>JINDAL ALUMINIUM LTD.</b> BANGALORE-560073 (INDIA)	DRAWN	J.P.KAUSHIK	DATE	13-05-2013
		CHECKED			
1. ALL DIMENSIONS ARE IN mm. 2. ROUND OFF ALL SHARP CORNERS WITH 0.40 mm. 3. TOLERANCES WILL BE AS PER IS:6477-1983 UNLESS OTHERWISE SPECIFIED		APPROVED	S.S.GARG		17-05-2013
		SCALE			2:1
PARTY'S NAME GIRDHARI LAL CONSTRUCTION PVT. LTD., GURGOAN		AREA	mm <sup>2</sup>		375.436
		PERIMETER	mm.		396.479
PARTY'S DRAWING No. LIGHTER OF SECTION No:-21051		WEIGHT	kg/m		1.017
		DRAWING No.		SECTION No.	
ALLOY & TEMPER HE9 WP		P-12716-1			-
		S3758			S3758
DESCRIPTION WINDOW SECTION		21452			21452