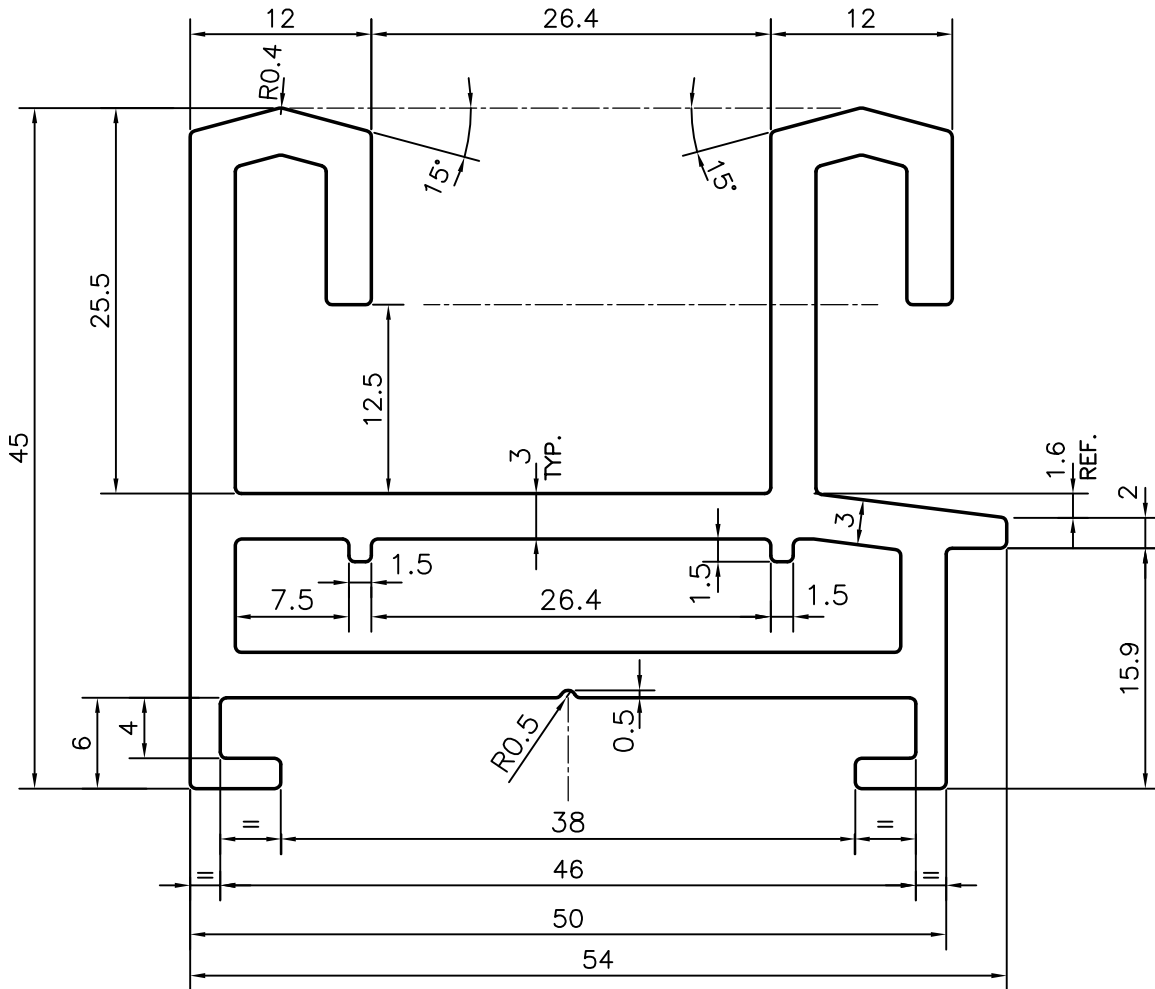
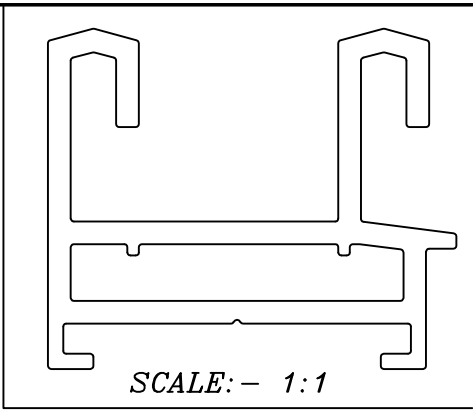


P-13023
21470



TOLERANCES ON OVERALL WIDTHS & WIDTHS ACROSS FLATS OF BARS, & REGULAR SECTIONS

UPTO 6.40mm - ±0.20	UPTO 32.0mm - ±0.38	UPTO 120.0mm - ±0.85	1. STRAIGHTNESS=1.7mm/M 2. TWIST=1.7mm/M 3. ANGULARITY= ±2' 4. FLATNESS =0.007xWIDTH
UPTO 10.0mm - ±0.23	UPTO 50.0mm - ±0.46	UPTO 160.0mm - ±1.02	
UPTO 12.0mm - ±0.25	UPTO 60.0mm - ±0.53	UPTO 200.0mm - ±1.14	
UPTO 16.0mm - ±0.28	UPTO 80.0mm - ±0.69	UPTO 250.0mm - ±1.40	
UPTO 25.0mm - ±0.30	UPTO 100.0mm - ±0.75	UPTO 300.0mm - ±1.65	

<p>SYMBOL OF QUALITY AN ISO 9001 COMPANY</p>	<p>JINDAL ALUMINIUM LTD. BANGALORE-560073 (INDIA)</p>	DRAWN	NAME	DATE
		CHECKED	PARVESH	17-09-2013
<p>1. ALL DIMENSIONS ARE IN mm. 2. ROUND OFF ALL SHARP CORNERS WITH 0.40 mm. 3. TOLERANCES WILL BE AS PER IS:6477-1983 , UNLESS OTHERWISE SPECIFIED</p>		APPROVED	S.S.GARG	28-10-2013
		SCALE		2:1
<p>PARTY'S NAME</p> <p>GENERAL CATEGORY, BANGALORE MARKET</p>		AREA	mm ²	649.487
		PERIMETER	mm.	339.114
<p>PARTY'S DRAWING No.</p> <p>AS PER DRAWING</p>		WEIGHT	kg/m	1.754
		DRAWING No.		SECTION No.
<p>ALLOY & TEMPER</p> <p>HE9 WP</p>		P-13023		-
		21470		21470
<p>DESCRIPTION</p> <p>2 TRACK OUTER FRAME SECTION</p>				