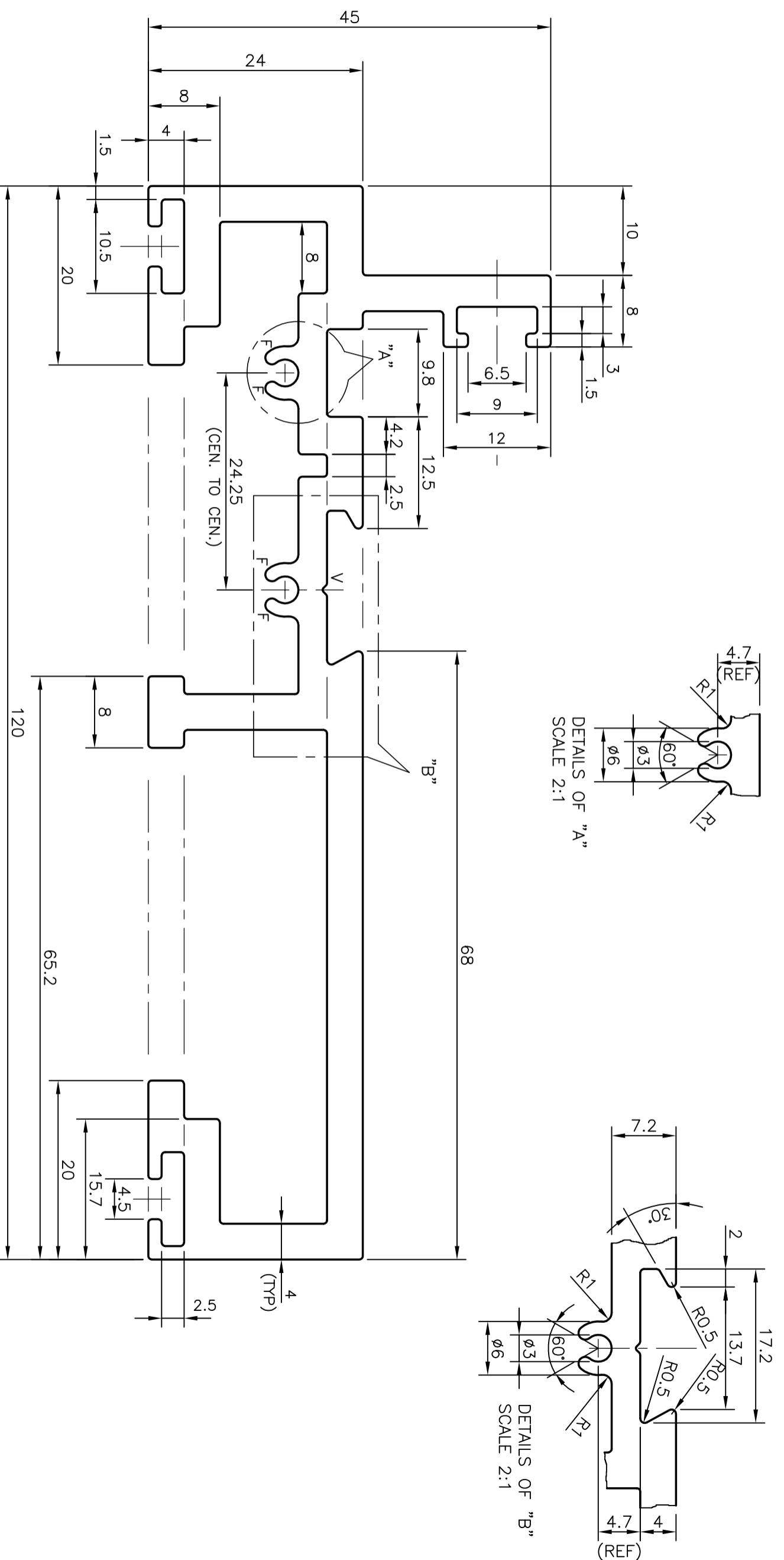
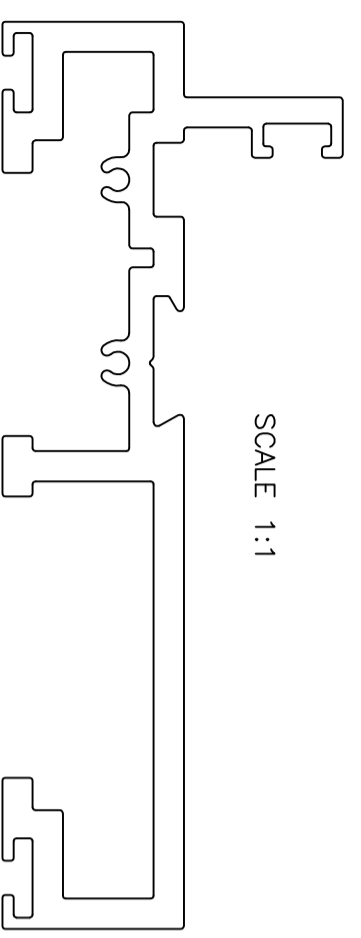


P-12668
S3747
21478



F = FULL RADIUS (4 PLACES)
V = 0.5x90° V-GROOVE (1 PLACE)

SCALE 1:1



TOLERANCES ON OVERALL WIDTHS & WIDTHS ACROSS FLATS OF BARS, & REGULAR SECTIONS		
UPTO 6.40mm - ±0.20	UPTO 32.0mm - ±0.38	UPTO 120.0mm - ±0.85
UPTO 10.0mm - ±0.23	UPTO 50.0mm - ±0.46	UPTO 160.0mm - ±1.02
UPTO 12.0mm - ±0.25	UPTO 60.0mm - ±0.53	UPTO 200.0mm - ±1.14
UPTO 16.0mm - ±0.28	UPTO 80.0mm - ±0.69	UPTO 250.0mm - ±1.40
UPTO 25.0mm - ±0.30	UPTO 100.0mm - ±0.75	UPTO 300.0mm - ±1.65
		UPTO 320.00mm - ±1.70

JINDAL
SYMBOL OF QUALITY
AN ISO 9001 COMPANY

JINDAL ALUMINIUM LTD.
BANGALORE-560073 (INDIA)

1. ALL DIMENSIONS ARE IN mm.
2. ROUND OFF ALL SHARP CORNERS WITH 0.40 mm.
3. TOLERANCES WILL BE AS PER IS:3965-1981 UNLESS OTHERWISE SPECIFIED

PARTY'S NAME	B.L. KASHYAP AND SONS LTD., NEW DELHI	NAME	SRIVATHSA	DATE	18-04-2013
PARTY'S DRAWING No.	AS PER SAMPLE	CHECKED			
ALLOY & TEMPER	HE9 WP	APPROVED	S.S.GARG		13-05-2013
DESCRIPTION	OUTER FRAME SECTION	SCALE	2:1		
		AREA mm ²	1044.118		
		PERIMETER mm.	583.897		
		WEIGHT kg/m	2.819		
		DRAWING No.	P-12668	SECTION No.	-
			S3747		S3747
			21478		21478