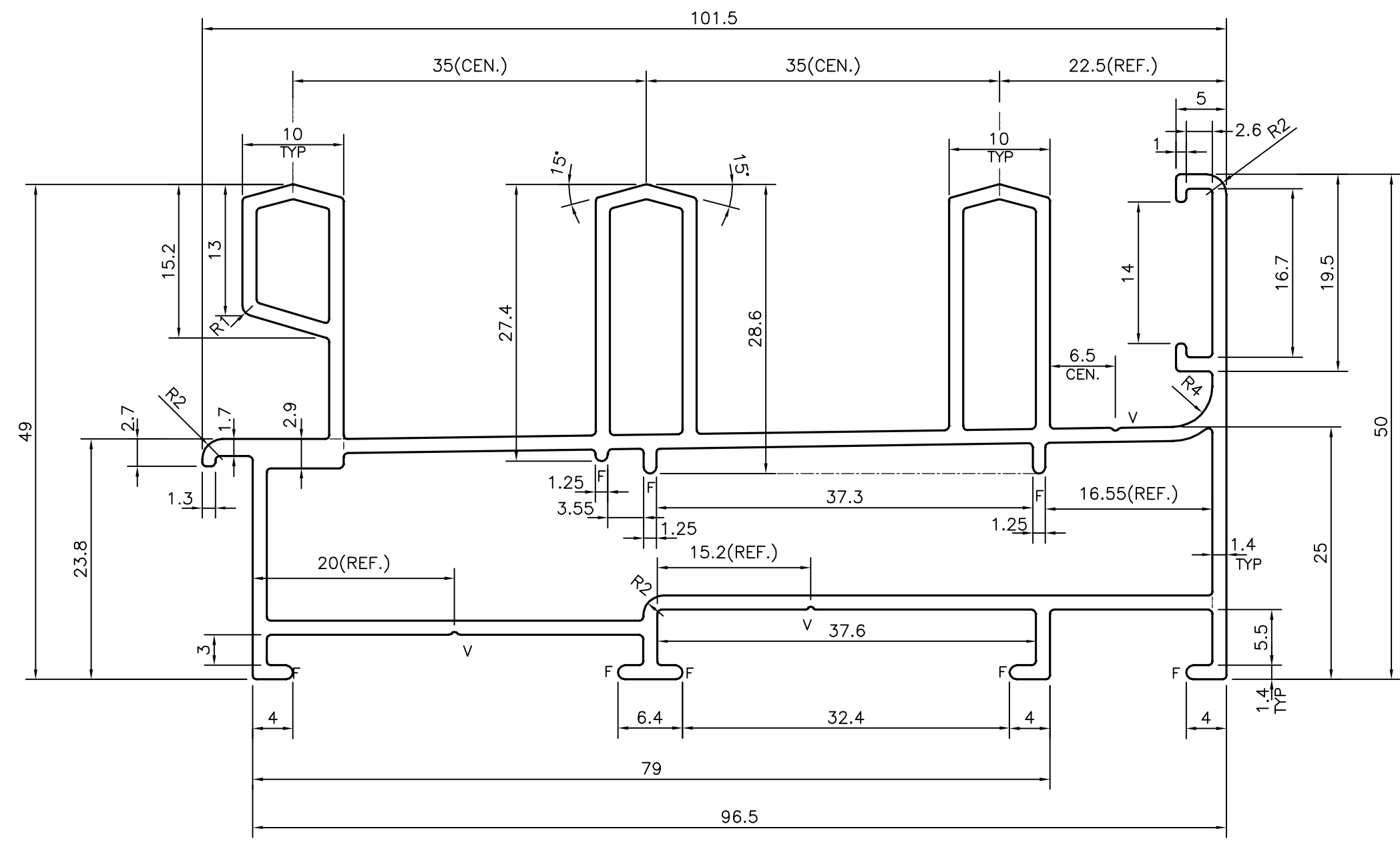
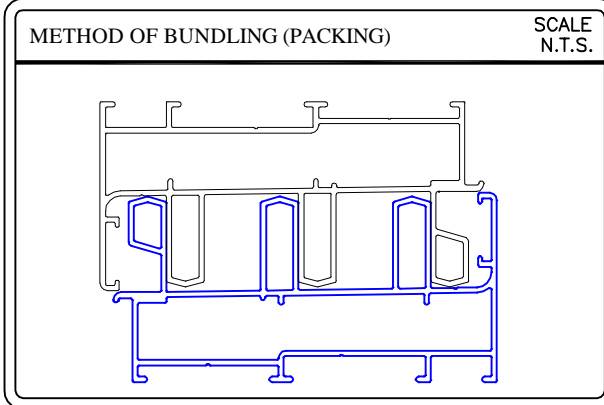
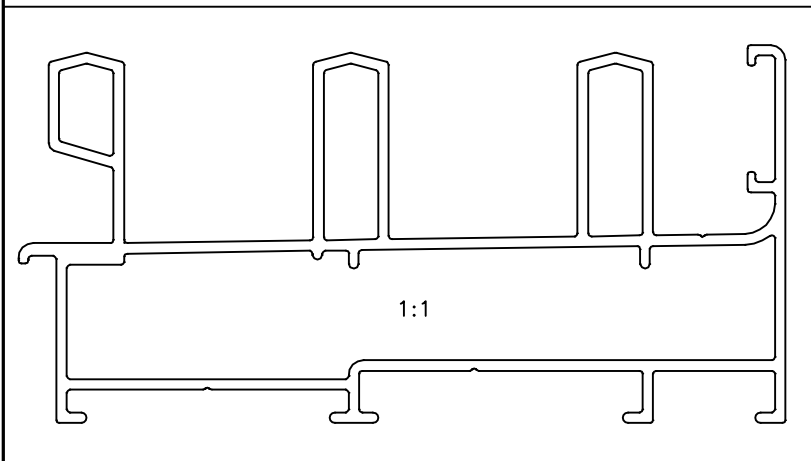


P-13076
21489



V = V GROOVE 0.3x90° (3 PLACES)
F = FULL RADIUS (8 PLACES)

TOLERANCES ON OVERALL WIDTHS & WIDTHS ACROSS FLATS OF BARS, & REGULAR SECTIONS			
UPTO 6.40mm - ±0.20	UPTO 32.0mm - ±0.38	UPTO 120.0mm - ±0.85	UPTO 320.00mm - ±1.70
UPTO 10.0mm - ±0.23	UPTO 50.0mm - ±0.46	UPTO 160.0mm - ±1.02	
UPTO 12.0mm - ±0.25	UPTO 60.0mm - ±0.53	UPTO 200.0mm - ±1.14	
UPTO 16.0mm - ±0.28	UPTO 80.0mm - ±0.69	UPTO 250.0mm - ±1.40	
UPTO 25.0mm - ±0.30	UPTO 100.0mm - ±0.75	UPTO 300.0mm - ±1.65	



	JINDAL ALUMINIUM LTD. BANGALORE-560073 (INDIA)	NAME	DATE
		DRAWN	J.P.KAUSHIK 05-10-2013
SYMBOL OF QUALITY AN ISO 9001 COMPANY		CHECKED	
		APPROVED	S.S.GARG 30-01-2014
1. ALL DIMENSIONS ARE IN mm. 2. ROUND OFF ALL SHARP CORNERS WITH 0.40 mm. 3. TOLERANCES WILL BE AS PER IS:6477-1983 UNLESS OTHERWISE SPECIFIED		SCALE	2:1
		AREA mm ²	665.815
PARTY'S NAME GENERAL CATEGORY, BANGALORE MARKET		PERIMETER mm.	529.412
		WEIGHT kg/m	1.798
PARTY'S DRAWING No. AS PER SAMPLE		DRAWING No.	SECTION No.
		P-13076	-
ALLOY & TEMPER HE9 WP		21489	21489
		DESCRIPTION WINDOW SECTION	