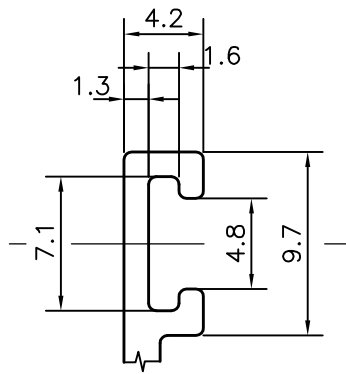
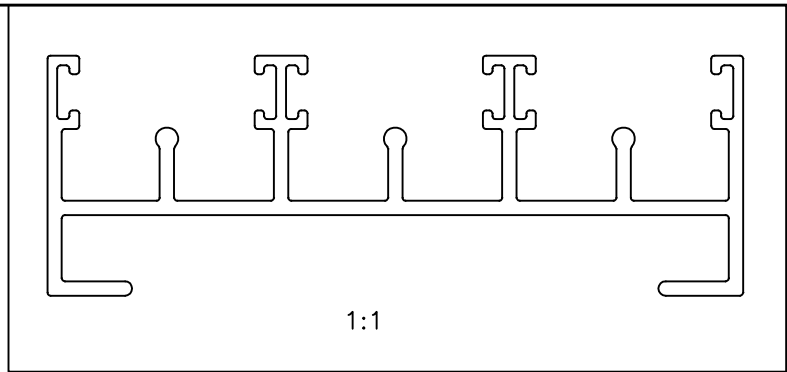


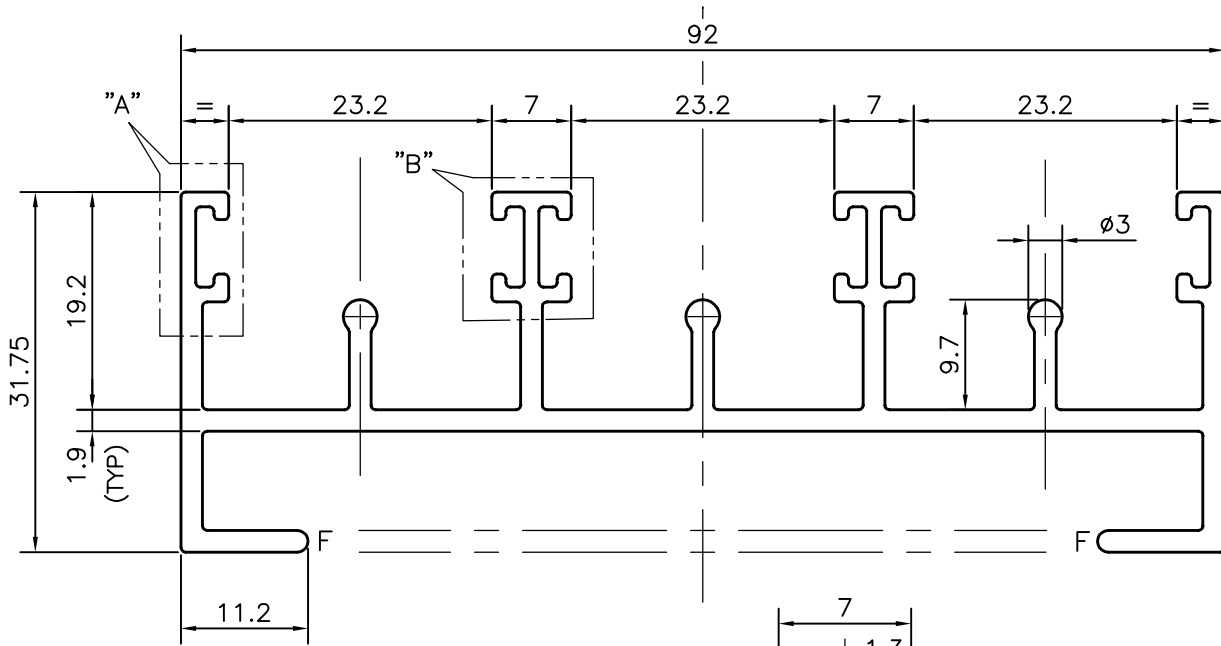
P-13204-1
S3960
21501



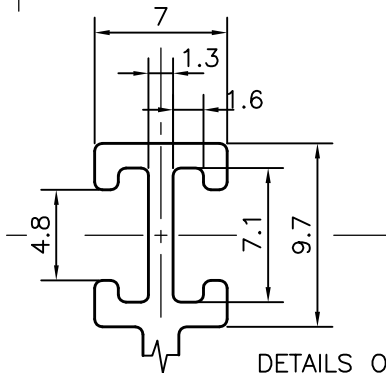
DETAILS OF "A"
SCALE 2.5:1



1:1



QUOTE NO. : Q80217




DETAILS OF "B"
SCALE 2.5:1

F = FULL RADIUS (2 PLACES)

TOLERANCES ON OVERALL WIDTHS & WIDTHS ACROSS FLATS OF BARS, & REGULAR SECTIONS

| | | | |
|---------------------|----------------------|----------------------|-----------------------|
| UPTO 6.40mm - ±0.20 | UPTO 32.0mm - ±0.38 | UPTO 120.0mm - ±0.85 | UPTO 320.00mm - ±1.70 |
| UPTO 10.0mm - ±0.23 | UPTO 50.0mm - ±0.46 | UPTO 160.0mm - ±1.02 | |
| UPTO 12.0mm - ±0.25 | UPTO 60.0mm - ±0.53 | UPTO 200.0mm - ±1.14 | |
| UPTO 16.0mm - ±0.28 | UPTO 80.0mm - ±0.69 | UPTO 250.0mm - ±1.40 | |
| UPTO 25.0mm - ±0.30 | UPTO 100.0mm - ±0.75 | UPTO 300.0mm - ±1.65 | |

| | | | | |
|--|--|----------------------|-------------|------------|
|  SYMBOL OF QUALITY AN ISO 9001 COMPANY | JINDAL ALUMINIUM LTD. BANGALORE-560073 (INDIA) | DRAWN | NAME | DATE |
| | | CHECKED | SRIVATHSA | 02-12-2013 |
| 1. ALL DIMENSIONS ARE IN mm. 2. ROUND OFF ALL SHARP CORNERS WITH 0.40 mm. 3. TOLERANCES WILL BE AS PER IS:3965-1981 , UNLESS OTHERWISE SPECIFIED | | APPROVED | S.S.GARG | 30-12-2013 |
| | | SCALE | | 1.5:1 |
| PARTY'S NAME ANAND TRADING CO., JABALPUR | | AREA mm ² | | 494.912 |
| | | PERIMETER mm. | | 554.918 |
| PARTY'S DRAWING No. AS PER SAMPLE | | WEIGHT kg/m | | 1.336 |
| | | DRAWING No. | SECTION No. | |
| ALLOY & TEMPER HE9 WP | | P-13204-1 | | - |
| | | S3960 | | S3960 |
| DESCRIPTION WINDOW SECTION 3-TRACK BOTTOM | | 21501 | | 21501 |
| | | | | |