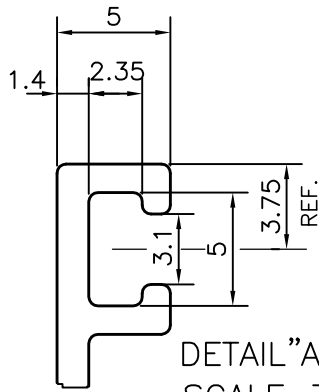
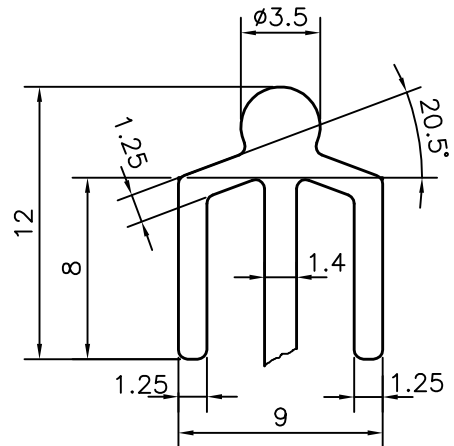


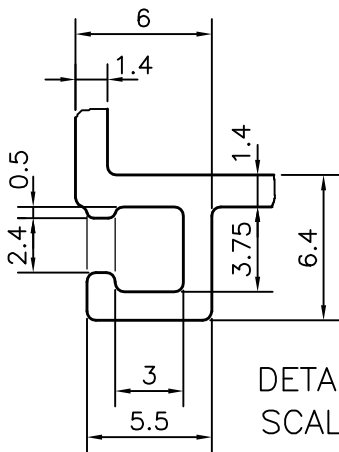
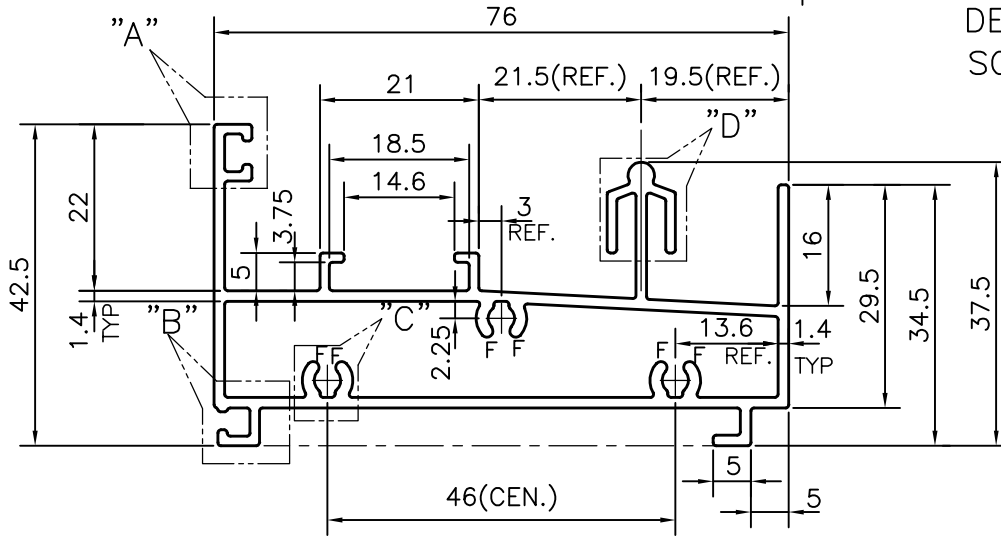
P-11675  
S3281  
21506



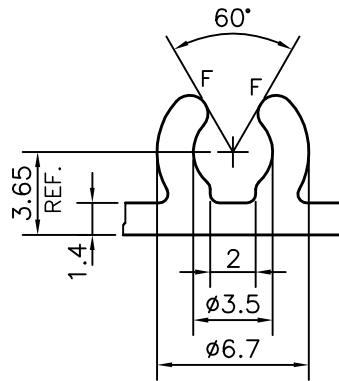
DETAIL "A"  
SCALE 3:1



DETAIL "D"  
SCALE 3:1



DETAIL "B"  
SCALE 3:1



DETAIL "C"  
SCALE 3:1

F = FULL RADIUS (6 PLACES )

Q No:-71714



SYMBOL OF QUALITY  
AN ISO 9001 COMPANY

**JINDAL ALUMINIUM LTD.**  
BANGALORE-560073 (INDIA)

	NAME	DATE
DRAWN	J.P.KAUSHIK	20-04-2012
CHECKED		
APPROVED	R.G.PAREKH	17-05-2012

1. ALL DIMENSIONS ARE IN mm.
2. ROUND OFF ALL SHARP CORNERS WITH 0.40 mm.
3. TOLERANCES WILL BE AS PER,IS:6477-1983 UNLESS OTHERWISE SPECIFIED

SCALE	1:1
AREA mm <sup>2</sup>	457.452
PERIMETER mm.	410.487
WEIGHT kg/m	1.235

PARTY'S NAME	SAHARA PRIME CITY LTD., LUCKNOW
PARTY'S DRAWING No.	SW7g*
ALLOY & TEMPER	HE9 WP
DESCRIPTION	WINDOW SECTION

DRAWING No.	SECTION No.
P-11675	-
S3281	S3281
21506	21506