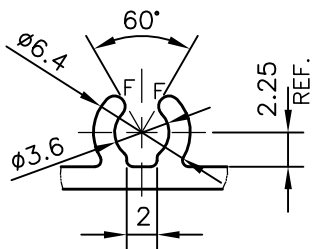
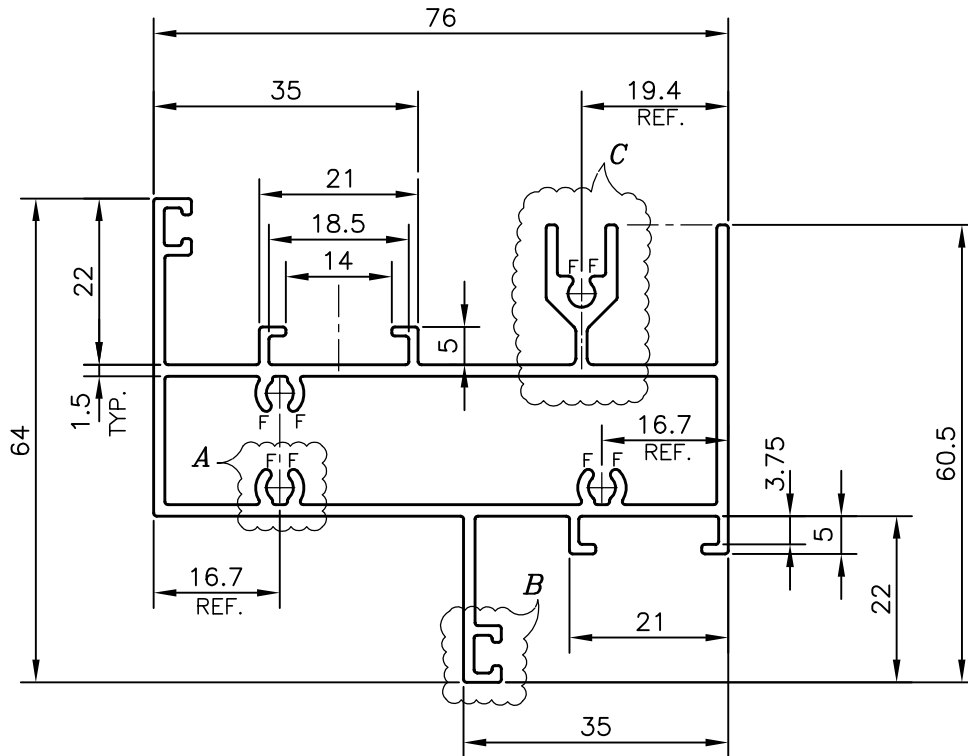


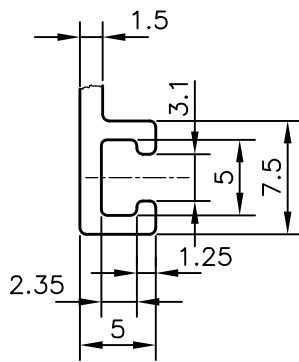
P-11724

S3331

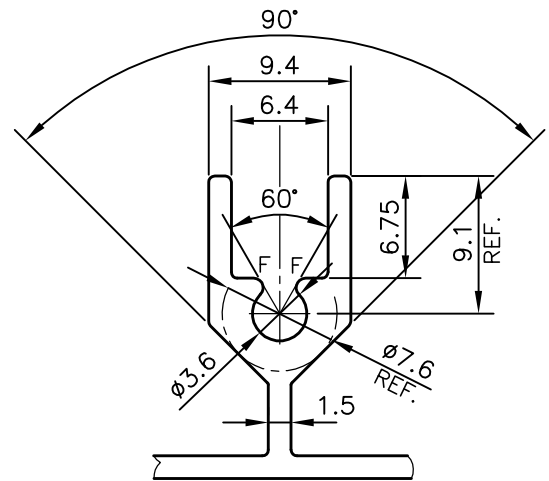
21564



DETAIL OF "A"  
SCALE :- 2:1



DETAIL OF "B"  
SCALE :- 2:1



DETAIL OF "C"  
SCALE :- 2:1

Q71746

F = FULL RADIUS (8 PLACES)



SYMBOL OF QUALITY  
AN ISO 9001 COMPANY

**JINDAL ALUMINIUM LTD.**  
BANGALORE-560073 (INDIA)

	NAME	DATE
DRAWN	PARVESH	27-04-2012
CHECKED		
APPROVED	J.N.RAI	04-06-2012
SCALE		1:1
AREA	mm <sup>2</sup>	538.184
PERIMETER	mm.	469.594
WEIGHT	kg/m	1.453
DRAWING No.	SECTION No.	
P-11724	-	
S3331	S3331	
21564	21564	

1. ALL DIMENSIONS ARE IN mm.
2. ROUND OFF ALL SHARP CORNERS WITH 0.40 mm.
3. TOLERANCES WILL BE AS PER IS:6477-1983, UNLESS OTHERWISE SPECIFIED

PARTY'S NAME	SAHARA PRIME CITY LTD., GURGAON
PARTY'S DRAWING No.	HT2b
ALLOY & TEMPER	HE9 WP
DESCRIPTION	WINDOW SECTION