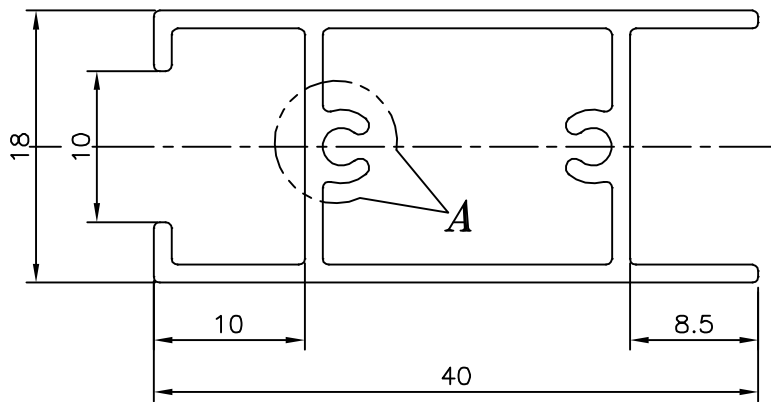
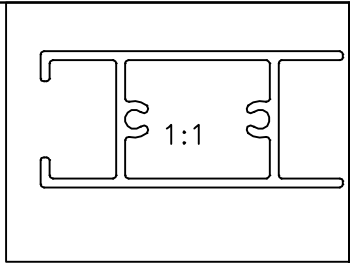
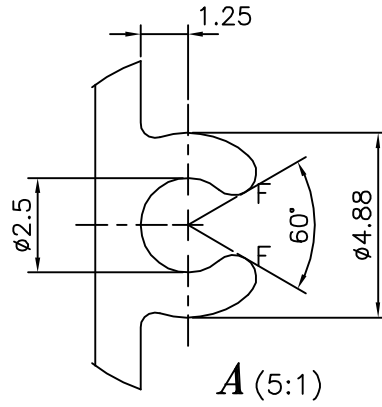


P-12720-1

S3762

21585



WEIGHT RANGE: -  $\pm 3\%$

WEIGHT RANGE: - 0.405 TO 0.431 kg/M

1. GENERAL WALL THICKNESS :- 1.19 mm.
2. F = FULL RADIUS (4)

TOLERANCES ON OVERALL WIDTHS & WIDTHS ACROSS FLATS OF BARS, & REGULAR SECTIONS

UPTO 6.40mm - $\pm 0.20$	UPTO 32.0mm - $\pm 0.38$	UPTO 120.0mm - $\pm 0.85$	UPTO 320.00mm - $\pm 1.70$
UPTO 10.0mm - $\pm 0.23$	UPTO 50.0mm - $\pm 0.46$	UPTO 160.0mm - $\pm 1.02$	
UPTO 12.0mm - $\pm 0.25$	UPTO 60.0mm - $\pm 0.53$	UPTO 200.0mm - $\pm 1.14$	
UPTO 16.0mm - $\pm 0.28$	UPTO 80.0mm - $\pm 0.69$	UPTO 250.0mm - $\pm 1.40$	
UPTO 25.0mm - $\pm 0.30$	UPTO 100.0mm - $\pm 0.75$	UPTO 300.0mm - $\pm 1.65$	



SYMBOL OF QUALITY  
AN ISO 9002 COMPANY

**JINDAL ALUMINIUM LTD.**  
BANGALORE-560073 (INDIA)

	NAME	DATE
DRAWN	J.P.KAUSHIK	13-05-2013
CHECKED		
APPROVED	S.S.GARG	17-05-2013
SCALE		2:1
AREA mm <sup>2</sup>		154.654
PERIMETER mm.		161.493
WEIGHT kg/m		0.418
DRAWING No.		SECTION No.
P-12720-1		-
S3762		S3762
21585		21585

1. ALL DIMENSIONS ARE IN mm.
2. ROUND OFF ALL SHARP CORNERS WITH 0.40 mm.
3. TOLERANCES WILL BE AS PER IS:6477-1983 UNLESS OTHERWISE SPECIFIED

PARTY'S NAME	GIRDHARI LAL CONSTRUCTION PVT. LTD., BATHINDA
PARTY'S DRAWING No.	LIGHTER OF SECTION No:-20844
ALLOY & TEMPER	6063 T6
DESCRIPTION	WINDOW SECTION