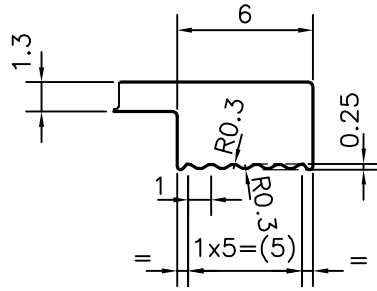


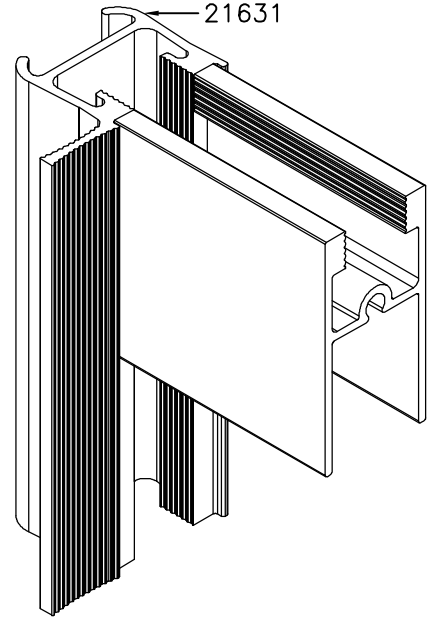
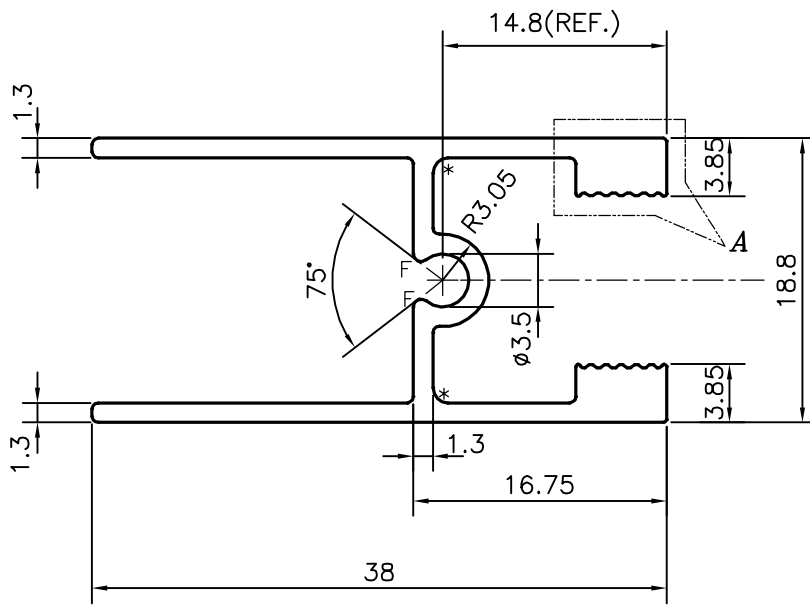
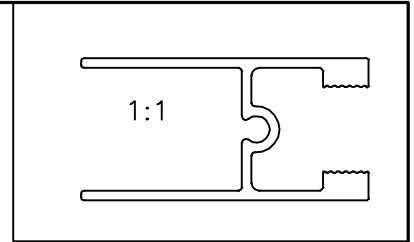
P-12823-1

S3789

21629



DETAIL OF "A"
SCALE 3:1




F = FULL RADIUS (2 PLACES)
* = 1.0 RADIUS (2 PLACES)

PLEASE SPECIFY THE EXPOSED SURFACE IN THE DRAWING WHEREVER BETTER FINISH REQUIRED.

TOLERANCES ON OVERALL WIDTHS & WIDTHS ACROSS FLATS OF BARS, & REGULAR SECTIONS

UPTO 6.40mm - ±0.20	UPTO 32.0mm - ±0.38	UPTO 120.0mm - ±0.85	UPTO 320.00mm - ±1.70
UPTO 10.0mm - ±0.23	UPTO 50.0mm - ±0.46	UPTO 160.0mm - ±1.02	
UPTO 12.0mm - ±0.25	UPTO 60.0mm - ±0.53	UPTO 200.0mm - ±1.14	
UPTO 16.0mm - ±0.28	UPTO 80.0mm - ±0.69	UPTO 250.0mm - ±1.40	
UPTO 25.0mm - ±0.30	UPTO 100.0mm - ±0.75	UPTO 300.0mm - ±1.65	

 SYMBOL OF QUALITY AN ISO 9001 COMPANY	JINDAL ALUMINIUM LTD. BANGALORE-560073 (INDIA)	DRAWN	J.P.KAUSHIK	DATE	11-06-2013	
		CHECKED				
		APPROVED	S.S.GARG		20-06-2013	
1. ALL DIMENSIONS ARE IN mm. 2. ROUND OFF ALL SHARP CORNERS WITH 0.40 mm. 3. TOLERANCES WILL BE AS PER IS:3965-1981 UNLESS OTHERWISE SPECIFIED		SCALE		2:1		
		AREA mm ²		157.427		
		PERIMETER mm.		207.511		
PARTY'S NAME		7Q INDUSTRIES PVT. LTD., CHENNAI		WEIGHT kg/m		0.425
PARTY'S DRAWING No.		AS PER SAMPLE		DRAWING No.	SECTION No.	
ALLOY & TEMPER		HE9 WP		P-12823-1	-	
DESCRIPTION		WINDOW SECTION		S3789	S3789	
				21629	21629	