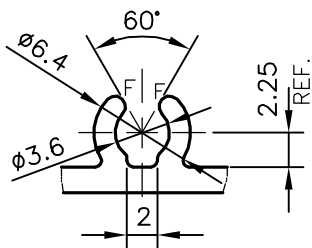
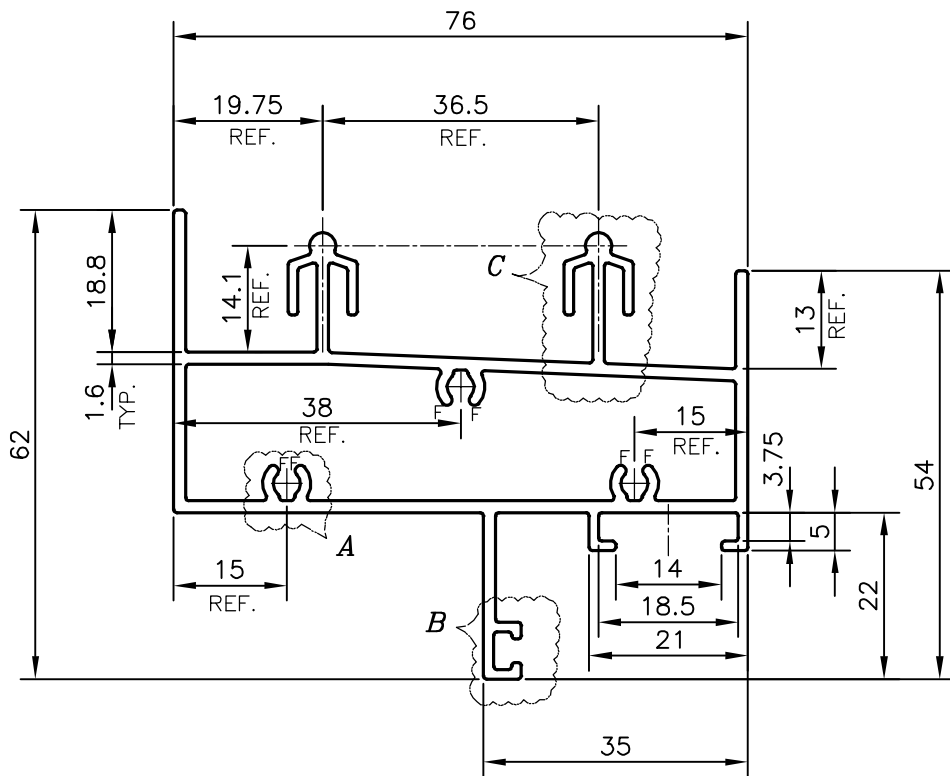


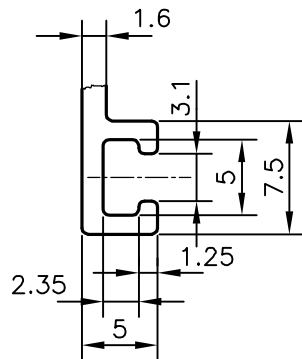
P-11725

S3316

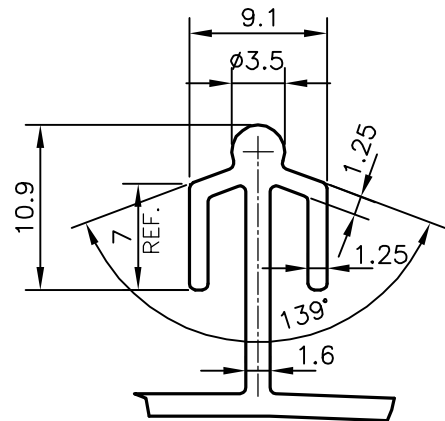
21691



DETAIL OF "A"
SCALE :- 2:1



DETAIL OF "B"
SCALE :- 2:1



DETAIL OF "C"
SCALE :- 2:1

Q71711

F = FULL RADIUS (6 PLACES)



SYMBOL OF QUALITY
AN ISO 9001 COMPANY

JINDAL ALUMINIUM LTD.
BANGALORE-560073 (INDIA)

	NAME	DATE
DRAWN	PARVESH	27-04-2012
CHECKED		
APPROVED	J.N.RAI	02-06-2012
SCALE		1:1
AREA mm ²		563.795
PERIMETER mm.		480.551
WEIGHT kg/m		1.522
DRAWING No.	SECTION No.	
P-11725	-	
S3316	S3316	
21691	21691	

1. ALL DIMENSIONS ARE IN mm.
2. ROUND OFF ALL SHARP CORNERS WITH 0.40 mm.
3. TOLERANCES WILL BE AS PER IS:6477-1983, UNLESS OTHERWISE SPECIFIED

PARTY'S NAME	SAHARA PRIME CITY LTD., GURGAON
PARTY'S DRAWING No.	SW7a*
ALLOY & TEMPER	HE9 WP
DESCRIPTION	WINDOW SECTION