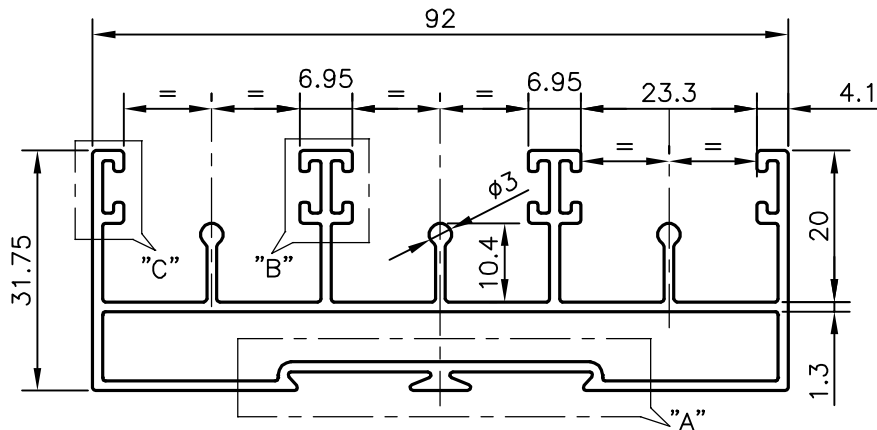
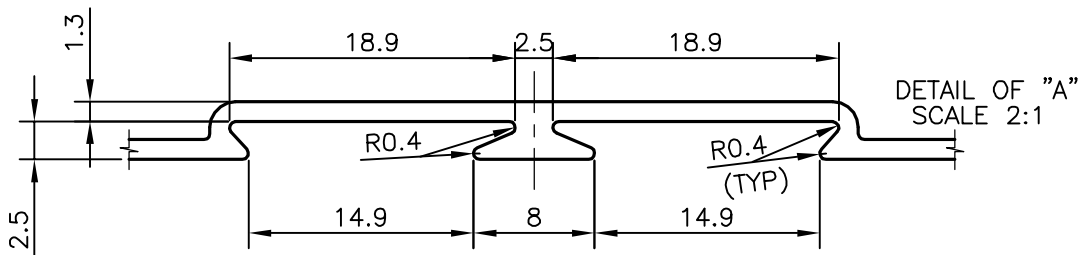
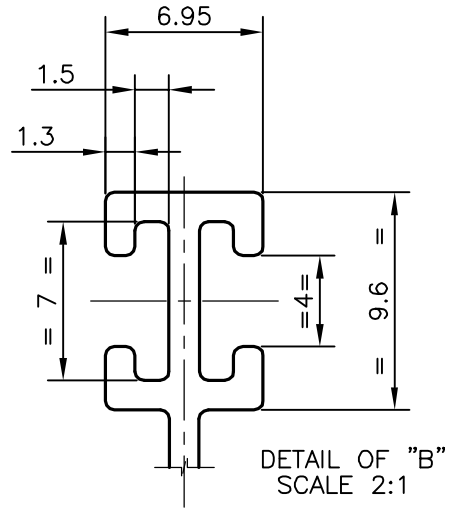
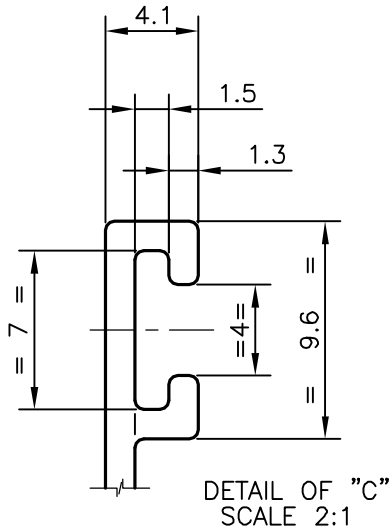


P-12965

S3825

21692



NOTE:-

1. GENERAL WALL THICKNESS = 1.30 mm

TOLERANCES ON OVERALL WIDTHS & WIDTHS ACROSS FLATS OF BARS, & REGULAR SECTIONS

UPTO 6.40mm - ±0.20	UPTO 32.0mm - ±0.38	UPTO 120.0mm - ±0.85	UPTO 320.00mm - ±1.70
UPTO 10.0mm - ±0.23	UPTO 50.0mm - ±0.46	UPTO 160.0mm - ±1.02	
UPTO 12.0mm - ±0.25	UPTO 60.0mm - ±0.53	UPTO 200.0mm - ±1.14	
UPTO 16.0mm - ±0.28	UPTO 80.0mm - ±0.69	UPTO 250.0mm - ±1.40	
UPTO 25.0mm - ±0.30	UPTO 100.0mm - ±0.75	UPTO 300.0mm - ±1.65	

	JINDAL ALUMINIUM LTD. BANGALORE-560073 (INDIA)	NAME	DATE
		DRAWN	J.P.KAUSHIK 16-08-2013
		CHECKED	
		APPROVED	S.S.GARG 17-08-2013
1. ALL DIMENSIONS ARE IN mm. 2. ROUND OFF ALL SHARP CORNERS WITH 0.40 mm. 3. TOLERANCES WILL BE AS PER IS:6477-1983 UNLESS OTHERWISE SPECIFIED		SCALE	1:1
		AREA mm ²	507.117
		PERIMETER mm.	543.108
PARTY'S NAME	INDERJIT MEHTA CONSTRUCTIONS PVT. LTD., BHUBANESHWAR	WEIGHT kg/m	1.369
PARTY'S DRAWING No.	AS PER DRAWING(OUR SECTION 21216)	DRAWING No.	SECTION No.
ALLOY & TEMPER	HE9 WP	P-12965	-
DESCRIPTION	WINDOW SECTION-BOTTOM RAIL	S3825	S3825
		21692	21692