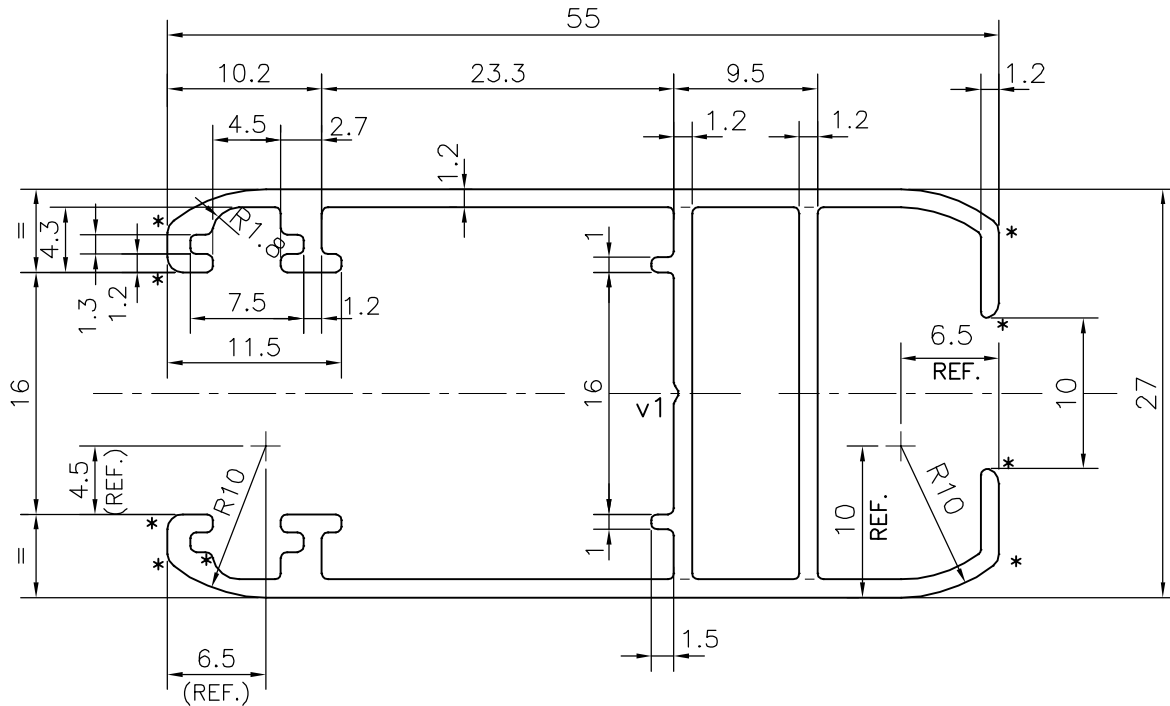
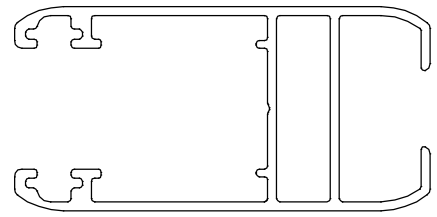
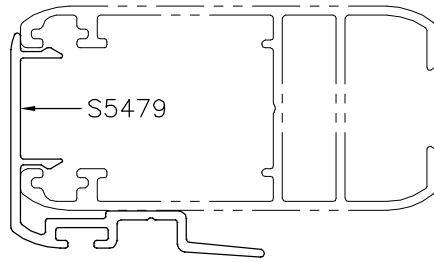


P-17281

S5478

21822



v1 = V GROOVE 0.3x120°
 * = 1.0 RADIUS (10 PLACES)

TOLERANCES ON OVERALL DIMENSIONS OF HOLLOW SECTIONS

UPTO 20.0mm - ±0.30	UPTO 80.0mm - ±0.70	UPTO 180.0mm - ±1.27	1. STRAIGHTNESS=1.7mm/M 2. TWIST=1.7mm/M 3. ANGULARITY= ±2° 4. FLATNESS =0.006xWIDTH
UPTO 30.0mm - ±0.38	UPTO 100.0mm - ±0.80	UPTO 200.0mm - ±1.40	
UPTO 40.0mm - ±0.45	UPTO 120.0mm - ±0.90	UPTO 225.0mm - ±1.52	
UPTO 50.0mm - ±0.52	UPTO 140.0mm - ±1.00		
UPTO 60.0mm - ±0.60	UPTO 160.0mm - ±1.14		



SYMBOL OF QUALITY
AN ISO 9001 COMPANY

JINDAL ALUMINIUM LTD.
 BANGALORE-560073 (INDIA)

	NAME	DATE
DRAWN	J.P.KAUSHIK	22-06-2017
CHECKED		
APPROVED	B.NATARAJA	22-08-2017
SCALE		2:1
AREA mm ²		242.402
PERIMETER mm.		320.818
WEIGHT kg/m		0.654
DRAWING No.	SECTION No.	
P-17281	-	
S5478	S5478	
21822	21822	

1. ALL DIMENSIONS ARE IN mm.
2. ROUND OFF ALL SHARP CORNERS WITH 0.40 mm.
3. TOLERANCES WILL BE AS PER,IS:6477-1983 UNLESS OTHERWISE SPECIFIED

PARTY'S NAME	NCC LTD., LUCKNOW
PARTY'S DRAWING No.	NCC/MTLS/ALU/SAMAJWADI/D-02
ALLOY & TEMPER	6063 T6
DESCRIPTION	WINDOW SECTION