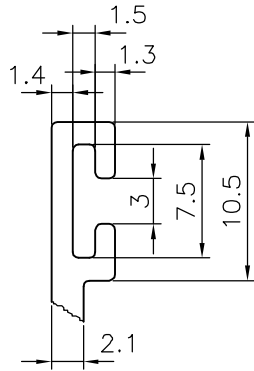
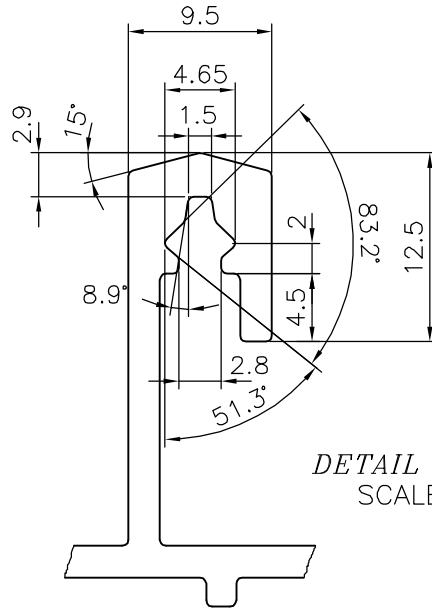


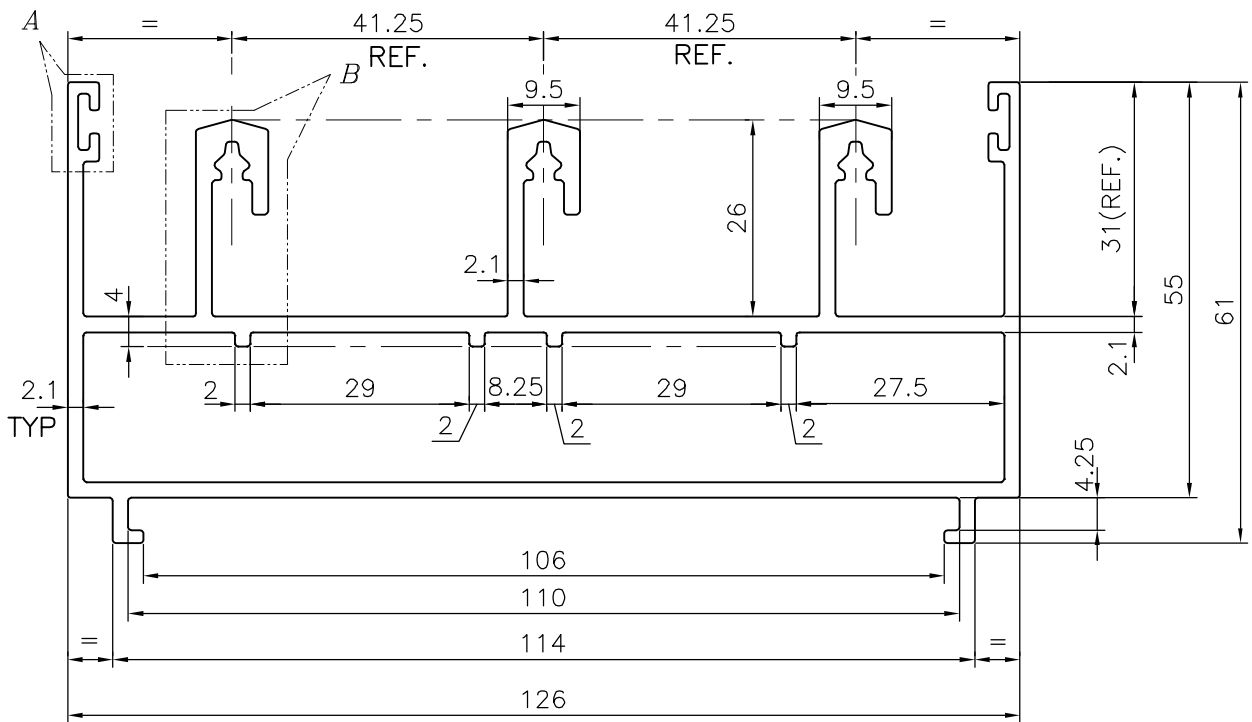
P-17852-2
S5768
21824



DETAIL OF "A"
SCALE 2:1




DETAIL OF "B"
SCALE 2:1



TOLERANCES ON OVERALL DIMENSIONS OF HOLLOW SECTIONS

UPTO 20.0mm - ±0.30	UPTO 80.0mm - ±0.70	UPTO 180.0mm - ±1.27	1. STRAIGHTNESS=1.7mm/M 2. TWIST=1.7mm/M 3. ANGULARITY= ±2° 4. FLATNESS =0.006xWIDTH
UPTO 30.0mm - ±0.38	UPTO 100.0mm - ±0.80	UPTO 200.0mm - ±1.40	
UPTO 40.0mm - ±0.45	UPTO 120.0mm - ±0.90	UPTO 225.0mm - ±1.52	
UPTO 50.0mm - ±0.52	UPTO 140.0mm - ±1.00		
UPTO 60.0mm - ±0.60	UPTO 160.0mm - ±1.14		

 SYMBOL OF QUALITY AN ISO 9001 COMPANY	JINDAL ALUMINIUM LTD. BANGALORE-560073 (INDIA)	NAME	DATE
		DRAWN	J.P.KAUSHIK 07-04-2018
		CHECKED	
		APPROVED	B.NATARAJA 14-04-2018
		SCALE	1:1
		AREA mm ²	1110.782
		PERIMETER mm.	734.529
		WEIGHT kg/m	2.999
PARTY'S NAME	HATIM GLAZING & CLADDING PVT. LTD.,MUMBAI	DRAWING No.	SECTION No.
PARTY'S DRAWING No.	AS PER DRAWING-MODIFIED OF X2262	P-17852-2	-
ALLOY & TEMPER	6063 T6	S5768	S5768
DESCRIPTION	3 TRACK VERTICAL & TOP PROFILE	21824	21824