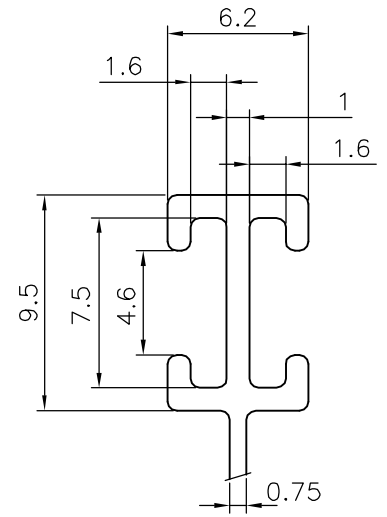
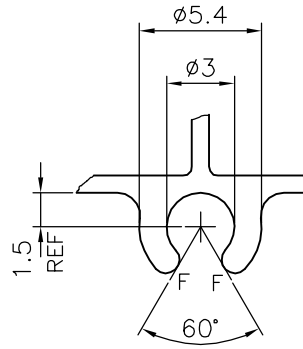
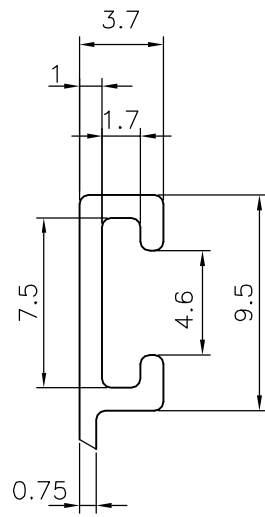


P-19106

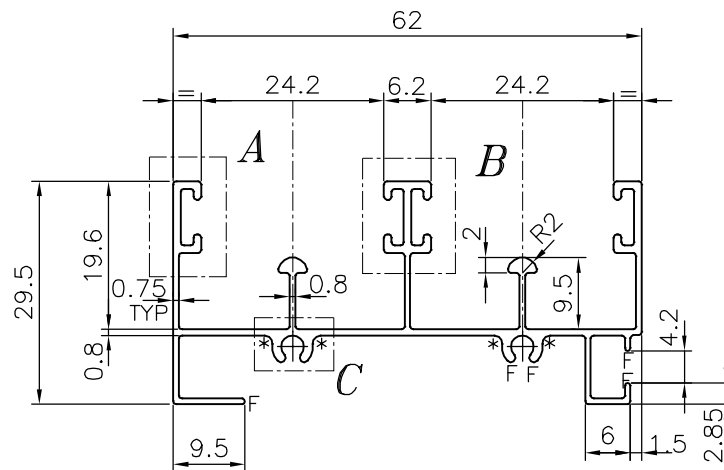
21848



DETAIL 'A'

DETAIL 'C'

DETAIL 'B'



F = FULL RADIUS (7 PLACES)

\* = 1.0 RADIUS (4 PLACES)



SYMBOL OF QUALITY  
AN ISO 9001 COMPANY

**JINDAL ALUMINIUM LTD.**  
BANGALORE-560073 (INDIA)

	NAME	DATE
DRAWN	J.P.KAUSHIK	06-02-2019
CHECKED		
APPROVED	B.NATARAJA	08-02-2019
SCALE		1:1
AREA mm <sup>2</sup>		205.065
PERIMETER mm.		439.791
WEIGHT kg/m		0.554
DRAWING No.	SECTION No.	
P-19106	-	
21848	21848	

1. ALL DIMENSIONS ARE IN mm.
2. ROUND OFF ALL SHARP CORNERS WITH 0.40 mm.
3. TOLERANCES WILL BE AS PER IS:3965-1981, UNLESS OTHERWISE SPECIFIED

PARTY'S NAME	GENERAL CATEGORY, KOLKATTA MARKET
PARTY'S DRAWING No.	LIGHTER OF 21053
ALLOY & TEMPER	HE9 WP
DESCRIPTION	WINDOW SECTION