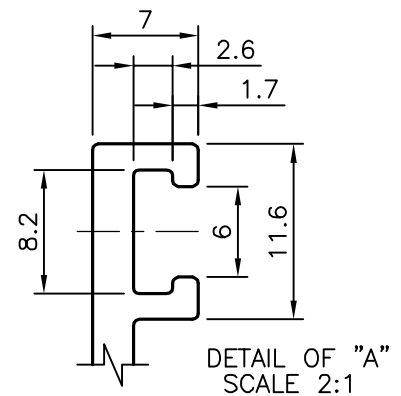
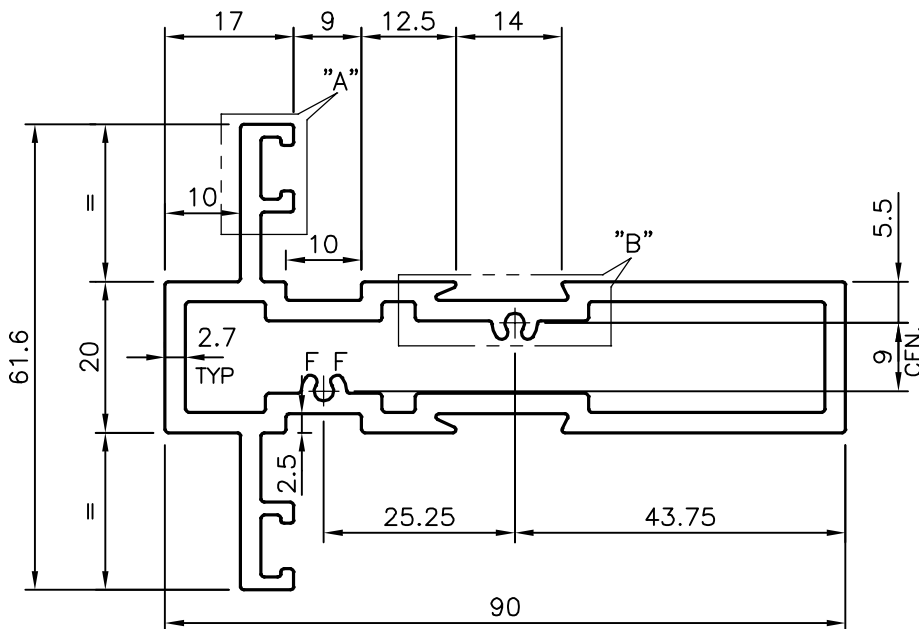
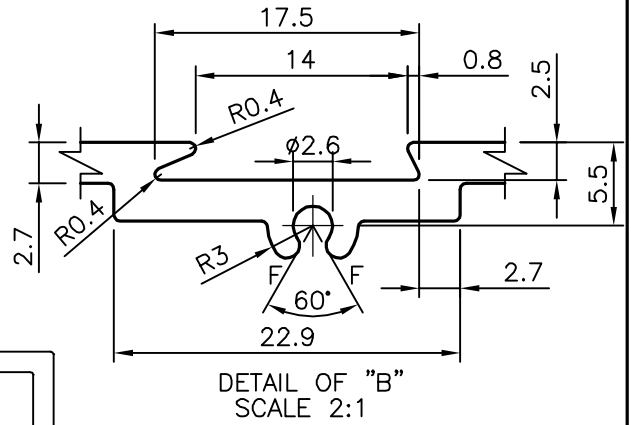
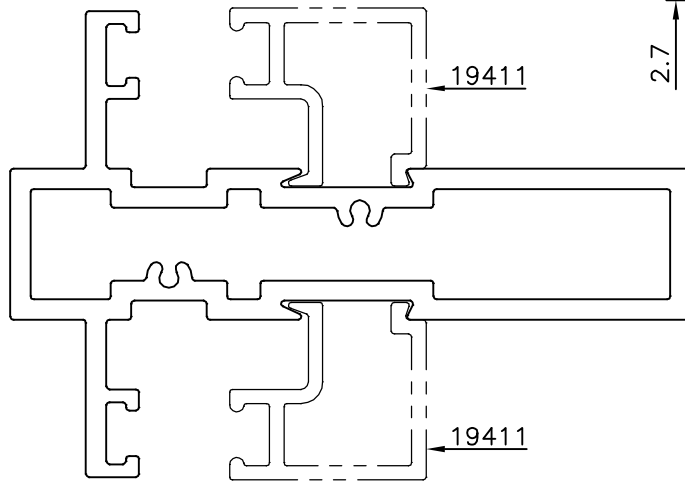


P-17450

S5525

21908



F = FULL RADIUS (4 PLACES)

TOLERANCES ON OVERALL DIMENSIONS OF HOLLOW SECTIONS

UPTO 20.0mm - ±0.30	UPTO 80.0mm - ±0.70	UPTO 180.0mm - ±1.27	1. STRAIGHTNESS=1.7mm/M 2. TWIST=1.7mm/M 3. ANGULARITY= ±2° 4. FLATNESS =0.006xWIDTH
UPTO 30.0mm - ±0.38	UPTO 100.0mm - ±0.80	UPTO 200.0mm - ±1.40	
UPTO 40.0mm - ±0.45	UPTO 120.0mm - ±0.90	UPTO 225.0mm - ±1.52	
UPTO 50.0mm - ±0.52	UPTO 140.0mm - ±1.00		
UPTO 60.0mm - ±0.60	UPTO 160.0mm - ±1.14		



SYMBOL OF QUALITY
AN ISO 9001 COMPANY

JINDAL ALUMINIUM LTD.
BANGALORE-560073 (INDIA)

1. ALL DIMENSIONS ARE IN mm.
2. ROUND OFF ALL SHARP CORNERS WITH 0.40 mm.
3. TOLERANCES WILL BE AS PER IS:6477-1983 UNLESS OTHERWISE SPECIFIED

PARTY'S NAME	DEE VEE PROJECTS LTD., RAIPUR	DRAWN	J.P.KAUSHIK	DATE	09-09-2017
		CHECKED			
PARTY'S DRAWING No.	AS PER DRAWING	APPROVED	B.NATARAJA		13-10-2017
		SCALE			1:1
ALLOY & TEMPER	HE9 WP	AREA	mm ²		788.963
		PERIMETER	mm.		368.841
DESCRIPTION	WINDOW SECTION	WEIGHT	kg/m		2.130
		DRAWING No.		SECTION No.	
		P-17450		-	
		S5525		S5525	
		21908		21908	