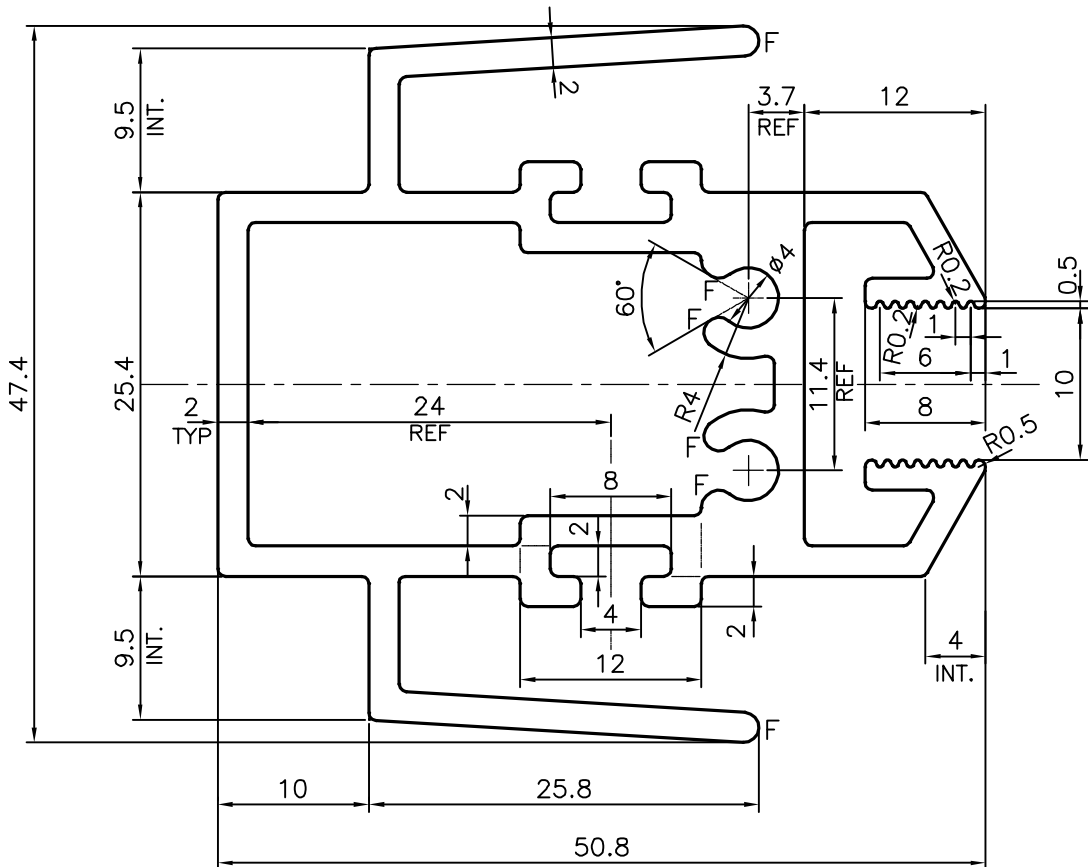
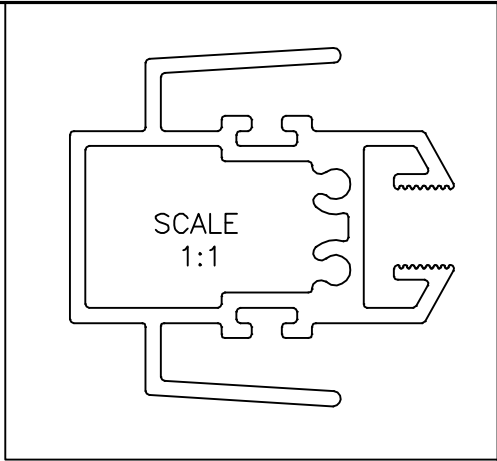



P-21025
S6826
21928



F = FULL RADIUS (6 PLACES)  
UNSPECIFIED RADIUS 0.50 mm

TOLERANCES ON OVERALL WIDTHS & WIDTHS ACROSS FLATS OF BARS, & REGULAR SECTIONS

UPTO 6.40mm - ±0.20	UPTO 32.0mm - ±0.38	UPTO 120.0mm - ±0.85	<b>1. STRAIGHTNESS=1.7 mm/M</b> <b>2. TWIST=1.7 mm/M</b> <b>3. ANGULARITY= ±2°</b> <b>4. FLATNESS =0.007xWIDTH</b>
UPTO 10.0mm - ±0.23	UPTO 50.0mm - ±0.46	UPTO 160.0mm - ±1.02	
UPTO 12.0mm - ±0.25	UPTO 60.0mm - ±0.53	UPTO 200.0mm - ±1.14	
UPTO 16.0mm - ±0.28	UPTO 80.0mm - ±0.69	UPTO 250.0mm - ±1.40	
UPTO 25.0mm - ±0.30	UPTO 100.0mm - ±0.75	UPTO 300.0mm - ±1.65	

 SYMBOL OF QUALITY AN ISO 9001 COMPANY	<b>JINDAL ALUMINIUM LTD.</b> <b>BANGALORE-560073 (INDIA)</b>	NAME	DATE
		DRAWN	J.P.KAUSHIK
		CHECKED	
		APPROVED	B.NATARAJA
			10-06-2020
1. ALL DIMENSIONS ARE IN mm. 2. ROUND OFF ALL SHARP CORNERS WITH 0.40 mm. 3. TOLERANCES WILL BE AS PER IS:6477-1983 UNLESS OTHERWISE SPECIFIED		SCALE	2:1
		AREA mm <sup>2</sup>	550.98
		PERIMETER mm.	378.557
		WEIGHT kg/m	1.488
		DRAWING No.	SECTION No.
		P-21025	
		S6826	S6826
		21928	21928
PARTY'S NAME	SRI BALAJI INDUSTRIES, CHENNAI		
PARTY'S DRAWING No.	AS PER DRAWING		
ALLOY & TEMPER	6063 T6		
DESCRIPTION	WINDOW SECTION		