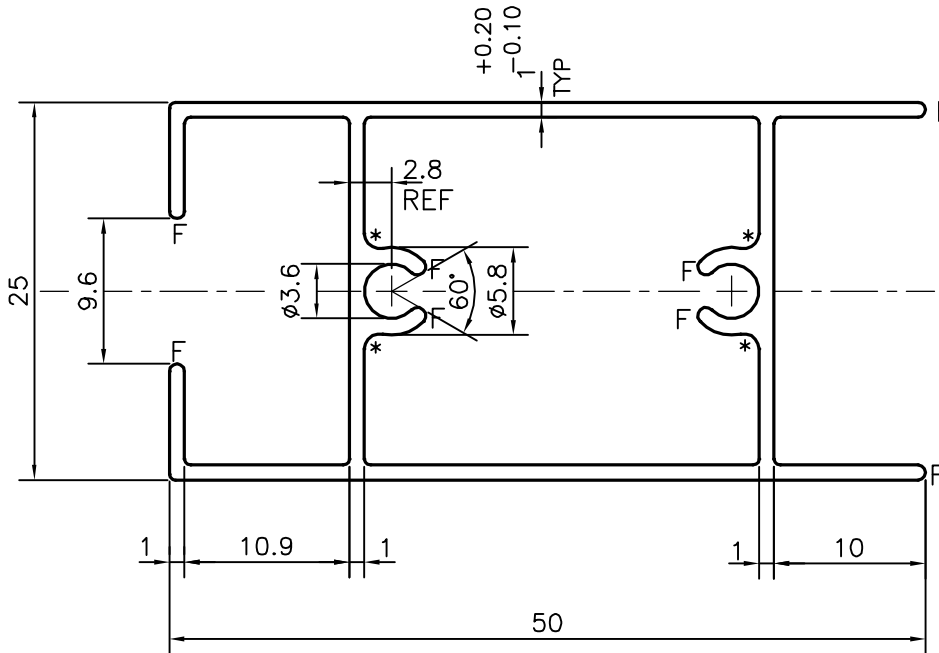
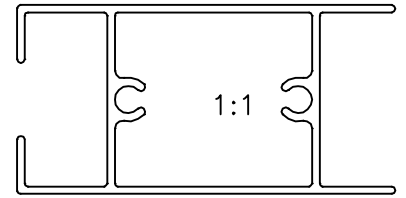


P-21266

21930



F = FULL RADIUS (8 PLACES)
 * = 1.0 RADIUS (4 PLACES)

TOLERANCES ON OVERALL DIMENSIONS OF HOLLOW SECTIONS

UPTO 20.0mm - ± 0.30	UPTO 80.0mm - ± 0.70	UPTO 180.0mm - ± 1.27	1. STRAIGHTNESS=1.7mm/M 2. TWIST=1.7mm/M 3. ANGULARITY= $\pm 2^\circ$ 4. FLATNESS =0.006xWIDTH
UPTO 30.0mm - ± 0.38	UPTO 100.0mm - ± 0.80	UPTO 200.0mm - ± 1.40	
UPTO 40.0mm - ± 0.45	UPTO 120.0mm - ± 0.90	UPTO 225.0mm - ± 1.52	
UPTO 50.0mm - ± 0.52	UPTO 140.0mm - ± 1.00		
UPTO 60.0mm - ± 0.60	UPTO 160.0mm - ± 1.14		



SYMBOL OF QUALITY
 AN ISO 9001 COMPANY

JINDAL ALUMINIUM LTD.
 BANGALORE-560073 (INDIA)

	NAME	DATE
DRAWN	J.P.KAUSHIK	06-08-2020
CHECKED		
APPROVED	J.N.RAI	25-08-2020
SCALE		2:1
AREA mm ²		180.648
PERIMETER mm.		217.51
WEIGHT kg/m		0.488
DRAWING No.	SECTION No.	
P-21266	-	
21930	21930	

- ALL DIMENSIONS ARE IN mm.
- ROUND OFF ALL SHARP CORNERS WITH 0.40 mm.
- TOLERANCES WILL BE AS PER IS:6477-1983 , UNLESS OTHERWISE SPECIFIED

PARTY'S NAME	ALUMENTICA TRADING PVT. LTD., PATNA
PARTY'S DRAWING No.	AS PER DRAWING
ALLOY & TEMPER	6063 T6
DESCRIPTION	WINDOW SECTION