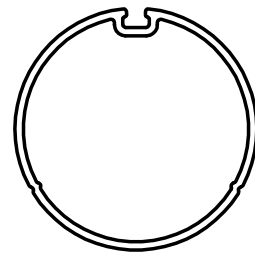
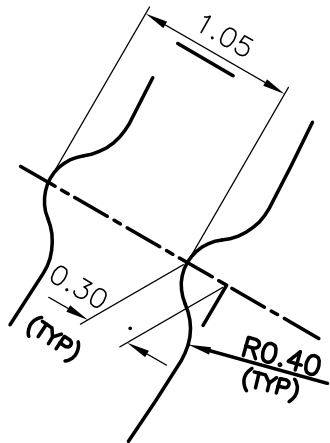
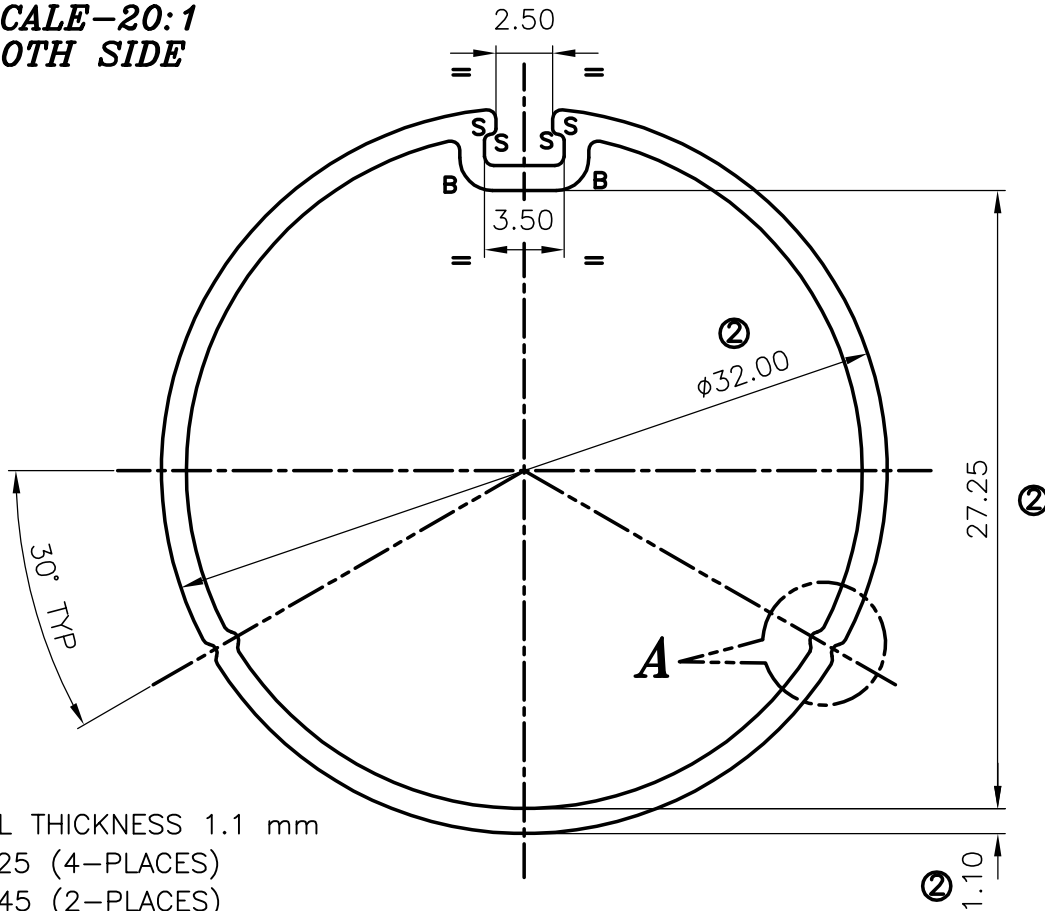


P-2861
S568
2799
22015




SCALE 1:1

DETAILS OF "A"
SCALE-20:1
BOTH SIDE



GENERAL WALL THICKNESS 1.1 mm
S = RADII 0.25 (4-PLACES)
B = RADII 1.45 (2-PLACES)

S568

ISSUE -2	O.D, LENGTH ,THICKNES AND WEIGHT CHANGED FROM $\phi 31.20, 26.5, 1.05$ AND 0.282 W.R.T $\phi 32.0, 27.25, 1.10$ AND 0.303 AS PER PARTY'S REQUIREMENT	1-12-2K	RANGASWAMY			
ISSUE NO.	DESCRIPTION	DATE	DRAWN	CHECKED	APPROVED	
 SYMBOL OF QUALITY AN ISO 9002 COMPANY	JINDAL ALUMINIUM LTD. BANGALORE-560073 (INDIA)			NAME	DATE	
			DRAWN	RANGASWAMY	1-12-2K	
			CHECKED			
1. ALL DIMENSIONS ARE IN mm. 2. ROUND OFF ALL SHARP CORNERS WITH 0.40 mm. 3. TOLERANCES WILL BE AS PER I.S. 6477-1983 UNLESS OTHERWISE SPECIFIED			APPROVED			
			SCALE		3:1	
			WEIGHT kg/m		0.303 (2)	
PARTY'S NAME	ALPS INDUSTRIES LTD. GHAZIABAD.		SECTION No.		22015	
PARTY'S DRAWING No.	AS PER SAMPLE		DRAWING No.			
ALLOY & TEMPER	HE9 WP		22015			
DESCRIPTION	MISC TUBE					