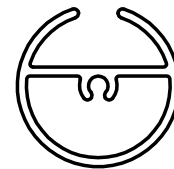


P-2862

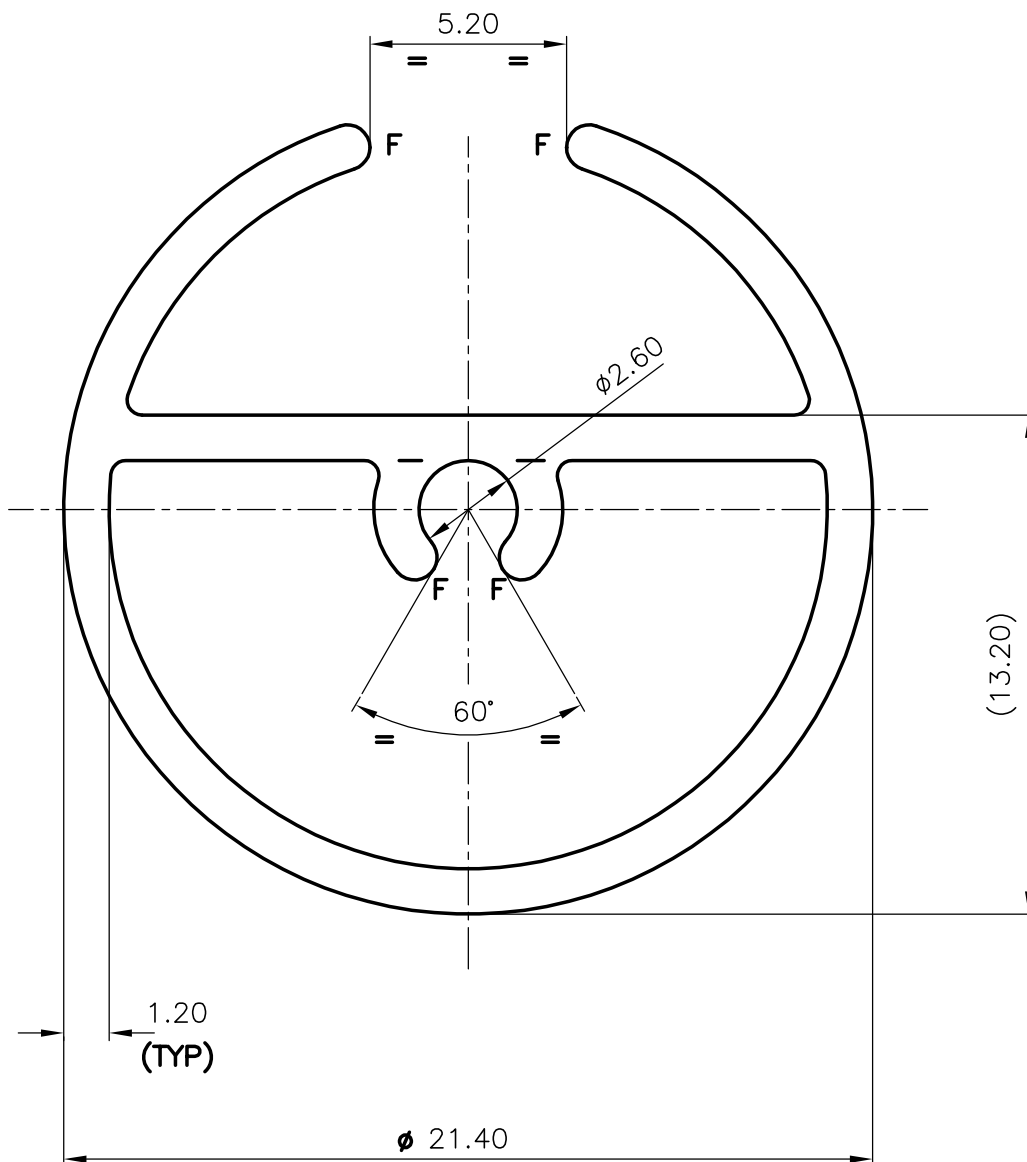
S569

2800

22016




1:1



GENERAL WALL THICKNESS 1.20 mm
 F = RADII FULL (4-PLACES)

S569

 SYMBOL OF QUALITY AN ISO 9002 COMPANY	JINDAL ALUMINIUM LTD. BANGALORE-560073 (INDIA)	NAME	DATE
		DRAWN	P,KULKARNI 3-8-2000
1. ALL DIMENSIONS ARE IN mm. 2. ROUND OFF ALL SHARP CORNERS WITH 0.40 mm. 3. TOLERANCES WILL BE AS PER I.S. 6477-1983 UNLESS OTHERWISE SPECIFIED		CHECKED	
		APPROVED	
		SCALE	5:1
PARTY'S NAME	ALPS INDUSTRIES LTD. GHAZIABAD.	WEIGHT kg/m	0.270
PARTY'S DRAWING No.	AS PER SAMPLE	SECTION No.	22016
ALLOY & TEMPER	HE9 WP	DRAWING No.	
DESCRIPTION	MISC TUBE	22016	