

PERIMETER = 225.634mm

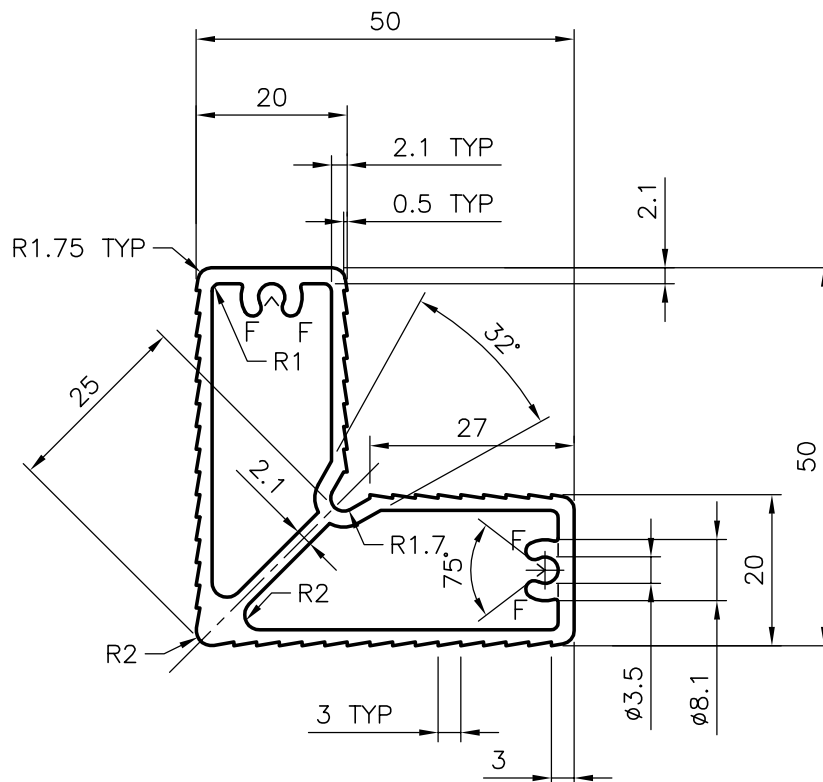
S722

4935

22109


NOTE:-

1. F=FULL RADIUS (4-PLCS)



GENERAL WALL THICKNESS :-2.1 mm

PLEASE SPECIFY THE EXPOSED SURFACE IN THE DRAWING WHEREVER BETTER FINISH REQUIRED.

 SYMBOL OF QUALITY AN ISO 9002 COMPANY	JINDAL ALUMINIUM LTD. BANGALORE-560073 (INDIA)	NAME	DATE
		DRAWN	RANGASWAMY 23-06-01
1. ALL DIMENSIONS ARE IN mm. 2. ROUND OFF ALL SHARP CORNERS WITH 0.40 mm. 3. TOLERANCES WILL BE AS PER IS: 6477-1983 UNLESS OTHERWISE SPECIFIED		CHECKED	
		APPROVED	
PARTY'S NAME	NINANS TRADING COMPANY., PATHANAMTHITTA (KERALA)	SCALE	1:1
PARTY'S DRAWING No.	AS PER SAMPLE NT-88	WEIGHT kg/m	1.256
ALLOY & TEMPER	6063 T6	SECTION No.	22109
DESCRIPTION	KITCHEN CABINET PROFILE	DRAWING No.	22109