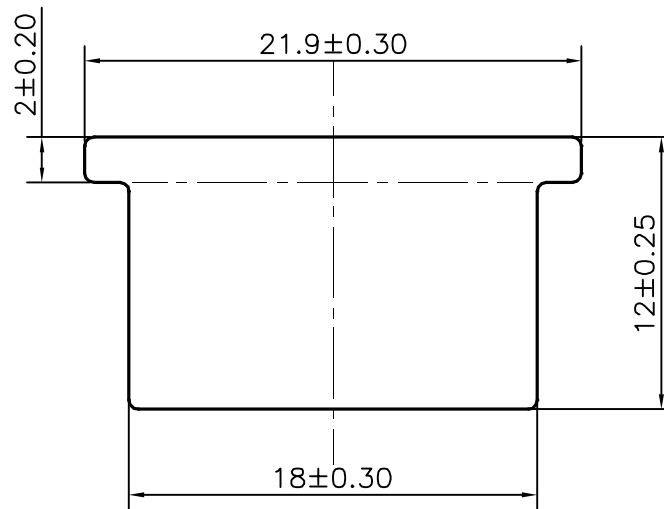


P-22979

22176



SCALE:- 1:1



SCALE 3:1

**APPROXIMATE WEIGHT RANGE - 0.544 - 0.664 kg/m**

TOLERANCES ON OVERALL WIDTHS & WIDTHS ACROSS FLATS OF BARS, & REGULAR SECTIONS

UPTO 6.40mm - ±0.20	UPTO 32.0mm - ±0.38	UPTO 120.0mm - ±0.85	1. STRAIGHTNESS= 1.7mm/M
UPTO 10.0mm - ±0.23	UPTO 50.0mm - ±0.46	UPTO 160.0mm - ±1.02	2. TWIST= 1.7mm/M
UPTO 12.0mm - ±0.25	UPTO 60.0mm - ±0.53	UPTO 200.0mm - ±1.14	3. ANGULARITY= ±2'
UPTO 16.0mm - ±0.28	UPTO 80.0mm - ±0.69	UPTO 250.0mm - ±1.40	4. FLATNESS= 0.007xWIDTH
UPTO 25.0mm - ±0.30	UPTO 100.0mm - ±0.75	UPTO 300.0mm - ±1.65	



SYMBOL OF QUALITY  
AN ISO 9001 COMPANY

**JINDAL ALUMINIUM LTD.**  
BANGALORE-560073 (INDIA)

	NAME	DATE
DRAWN	SURENDRA	21-09-2021
CHECKED		
APPROVED	B.NATARAJA	11-10-2021

1. ALL DIMENSIONS ARE IN mm.
2. ROUND OFF ALL SHARP CORNERS WITH 0.40 mm.
3. TOLERANCES WILL BE AS PER IS:3965-1981, UNLESS OTHERWISE SPECIFIED

SCALE	3:1
AREA mm <sup>2</sup>	223.663
PERIMETER mm.	66.427
WEIGHT kg/m	0.604

PARTY'S NAME	STANDARD CASTING CO., RAJKOT	DRAWING No.	P-22979	SECTION No.	-
PARTY'S DRAWING No.	AS PER SAMPLE		22176		22176
ALLOY & TEMPER	6063 T6				
DESCRIPTION	KITCHEN CABINET SECTION				