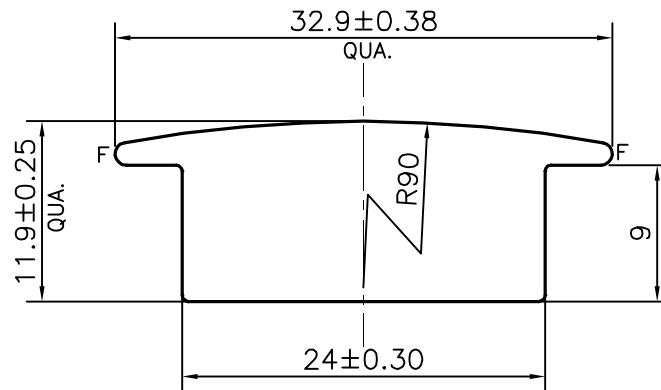


P-22981

22178



SCALE:- 1:1



SCALE 2:1

F = FULL RADIUS (2 PLACES)

APPROXIMATE WEIGHT RANGE - 0.716 - 0.875 kg/m

TOLERANCES ON OVERALL WIDTHS & WIDTHS ACROSS FLATS OF BARS, & REGULAR SECTIONS

UPTO 6.40mm - ± 0.20	UPTO 32.0mm - ± 0.38	UPTO 120.0mm - ± 0.85	1. STRAIGHTNESS= 1.7mm/M
UPTO 10.0mm - ± 0.23	UPTO 50.0mm - ± 0.46	UPTO 160.0mm - ± 1.02	2. TWIST= 1.7mm/M
UPTO 12.0mm - ± 0.25	UPTO 60.0mm - ± 0.53	UPTO 200.0mm - ± 1.14	3. ANGULARITY= $\pm 2'$
UPTO 16.0mm - ± 0.28	UPTO 80.0mm - ± 0.69	UPTO 250.0mm - ± 1.40	4. FLATNESS= $0.007 \times \text{WIDTH}$
UPTO 25.0mm - ± 0.30	UPTO 100.0mm - ± 0.75	UPTO 300.0mm - ± 1.65	



SYMBOL OF QUALITY
AN ISO 9001 COMPANY

JINDAL ALUMINIUM LTD.
BANGALORE-560073 (INDIA)

	NAME	DATE
DRAWN	SURENDRA	21-09-2021
CHECKED		
APPROVED	B.NATARAJA	11-10-2021

- ALL DIMENSIONS ARE IN mm.
- ROUND OFF ALL SHARP CORNERS WITH 0.40 mm.
- TOLERANCES WILL BE AS PER IS:3965-1981, UNLESS OTHERWISE SPECIFIED

SCALE	2:1
AREA mm ²	294.437
PERIMETER mm.	85.000
WEIGHT kg/m	0.795

PARTY'S NAME	STANDARD CASTING CO., RAJKOT	DRAWING No.	P-22981	SECTION No.	-
PARTY'S DRAWING No.	AS PER SAMPLE		22178		22178
ALLOY & TEMPER	6063 T6				
DESCRIPTION	KITCHEN CABINET SECTION				