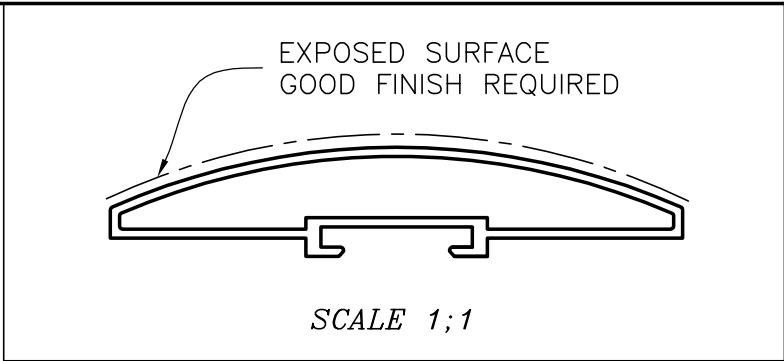
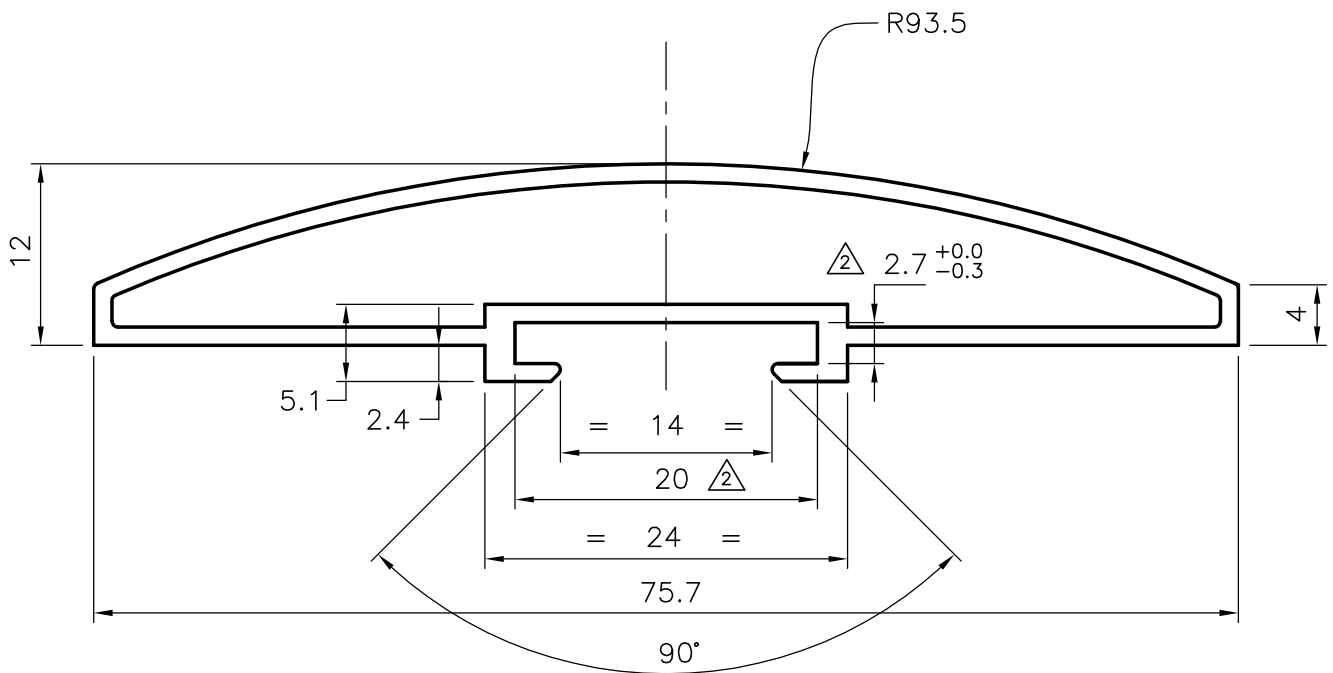



P-3152-1
X200
7165
22227



△ DIMENSION CHANGED FROM  
 21.60 TO 20.00 & 2.7 TO 2.7 <sup>+0.0</sup>/<sub>-0.3</sub>  
 & WEIGHT ALSO CHANGED FROM  
 0.558 kg/m TO 0.569 kg/m



GENERAL WALL THICKNESS;-1.2mm

 SYMBOL OF QUALITY AN ISO 9002 COMPANY	<b>JINDAL ALUMINIUM LTD.</b> BANGALORE-560073 (INDIA)		NAME	DATE	
		DRAWN	RAGHAVENDRA	02-11-01	
1. ALL DIMENSIONS ARE IN mm. 2. ROUND OFF ALL SHARP CORNERS WITH 0.40 mm. 3. TOLERANCES WILL BE AS PER IS: 6477-1981 UNLESS OTHERWISE SPECIFIED		CHECKED			
		APPROVED			
PARTY'S NAME		HARMONY SYSTEMS ., DELHI		SCALE	2:1 & 1:1
PARTY'S DRAWING No.		AS PER DRAWING		WEIGHT kg/m	0.569
ALLOY & TEMPER		HE9 WP		PERIMETER	188.19mm
DESCRIPTION		-		SECTION No.	22227
				DRAWING No.	22227