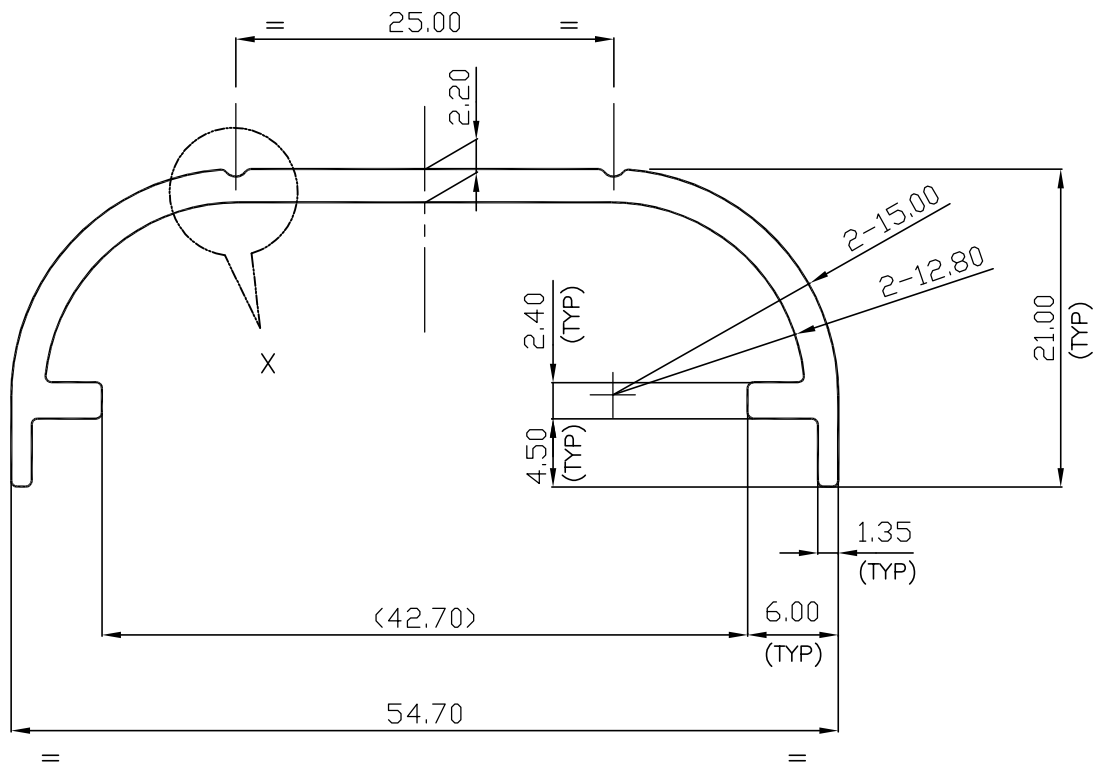
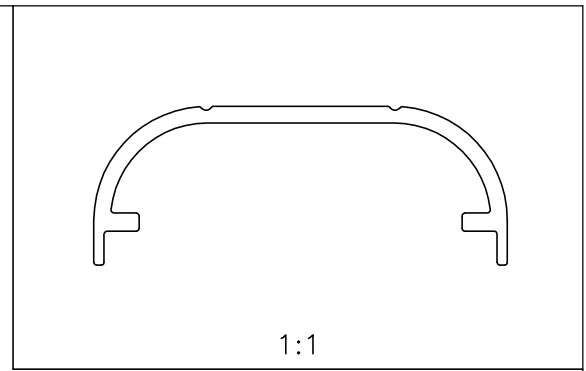
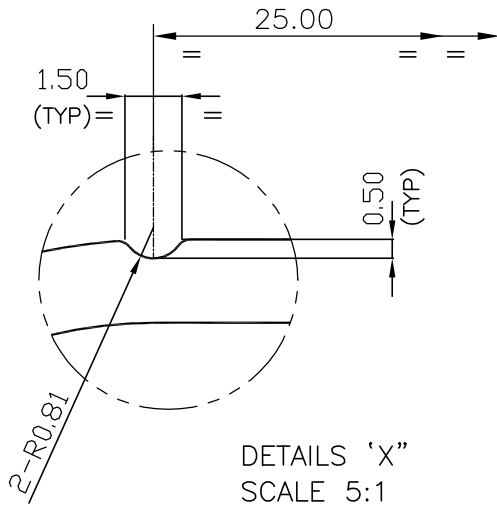


8135

22259



JINDAL ALUMINIUM LTD.
BANGALORE-560073

1. ALL DIMENSIONS ARE IN mm.
2. ROUND OFF ALL SHARP CORNERS WITH 0.4 mm.
3. TOLERANCES WILL BE AS PER IS: 3965-1981 UNLESS OTHERWISE SPECIFIED

JINDAL ALUMINIUM LTD. BANGALORE-560073		NAME	DATE
		DRAWN	P,KULKARNI
1. ALL DIMENSIONS ARE IN mm. 2. ROUND OFF ALL SHARP CORNERS WITH 0.4 mm. 3. TOLERANCES WILL BE AS PER IS: 3965-1981 UNLESS OTHERWISE SPECIFIED		CHECKED	
		APPROVED	
PARTY'S NAME	FEATHERLITE OFFICE SYSTEMS (P) LTD., BANGALORE	SCALE	2:1
PARTY'S DRAWING No.	AS PER SAMPLE	WEIGHT kg/m	0.502
ALLOY & TEMPER	HE9 WP	SECTION No.	22259
LENGTH	3658 mm	DRAWING No.	
DESCRIPTION	GENERAL MISCELLANEOUS SECTION	22259	