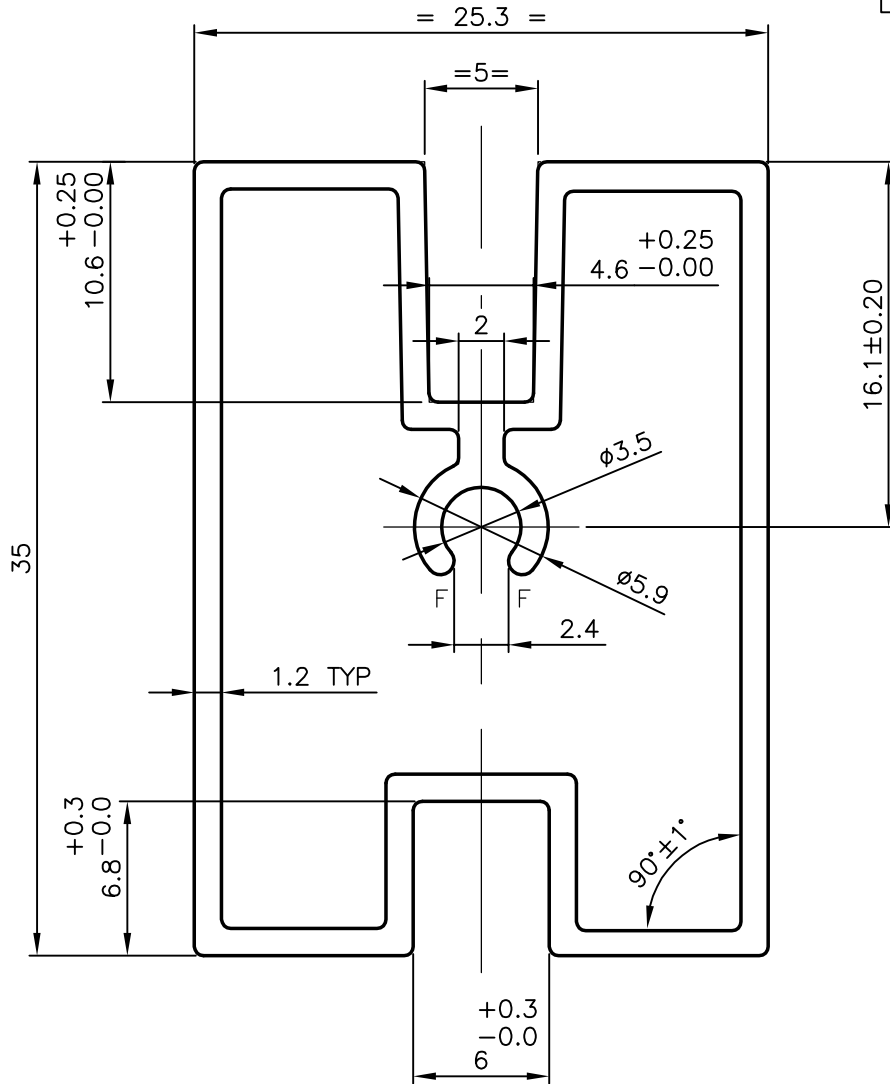
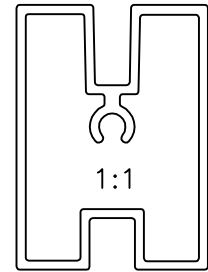


P-5707-1

X429

22411

GENERAL WALL THICKNESS = 1.2 mm  
 F = FULL RADIUS (2 PLACES)  
 ANGULAR TOLERANCE:-  $\pm 1^\circ$   
 TWIST & BEND:- 1.70 mm./M



SYMBOL OF QUALITY  
 AN ISO 9001 COMPANY

**JINDAL ALUMINIUM LTD.**  
 BANGALORE-560073 (INDIA)

	NAME	DATE
DRAWN	MALINGAPPA	12-08-2005
CHECKED		
APPROVED		

1. ALL DIMENSIONS ARE IN mm.
2. ROUND OFF ALL SHARP CORNERS WITH 0.40 mm.
3. TOLERANCES WILL BE AS PER DIN: 17615 PART-3 UNLESS OTHERWISE SPECIFIED

SCALE	3:1
AREA mm <sup>2</sup>	197.139
PERIMETER mm.	152.973
WEIGHT kg/m	0.532

PARTY'S NAME	GODREJ & BOYCE MFG. CO. LTD., BOMBAY
PARTY'S DRAWING No.	PL4-A3-4068 REV. 0
ALLOY & TEMPER	HE9 WP
DESCRIPTION	GLASS GROOVE DORIC

DRAWING No.	SECTION No.
P-5707-1	-
X429	X429
22411	22411